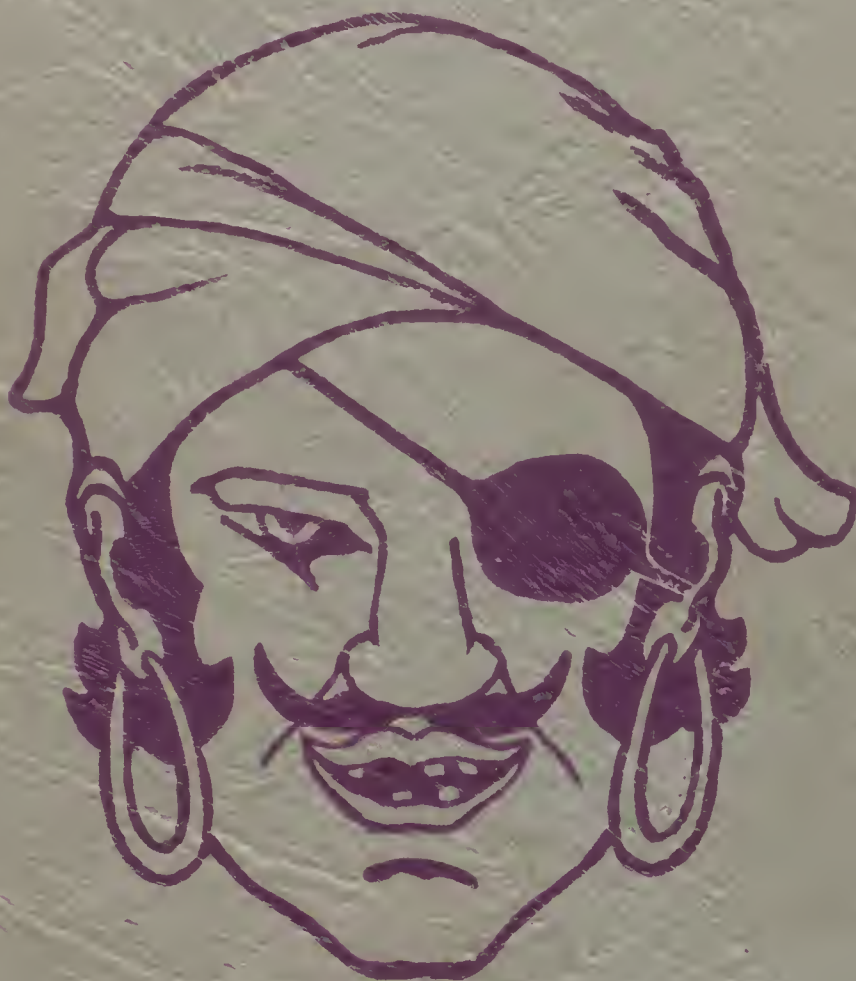


*THE*  
**TREASURE CHEST**

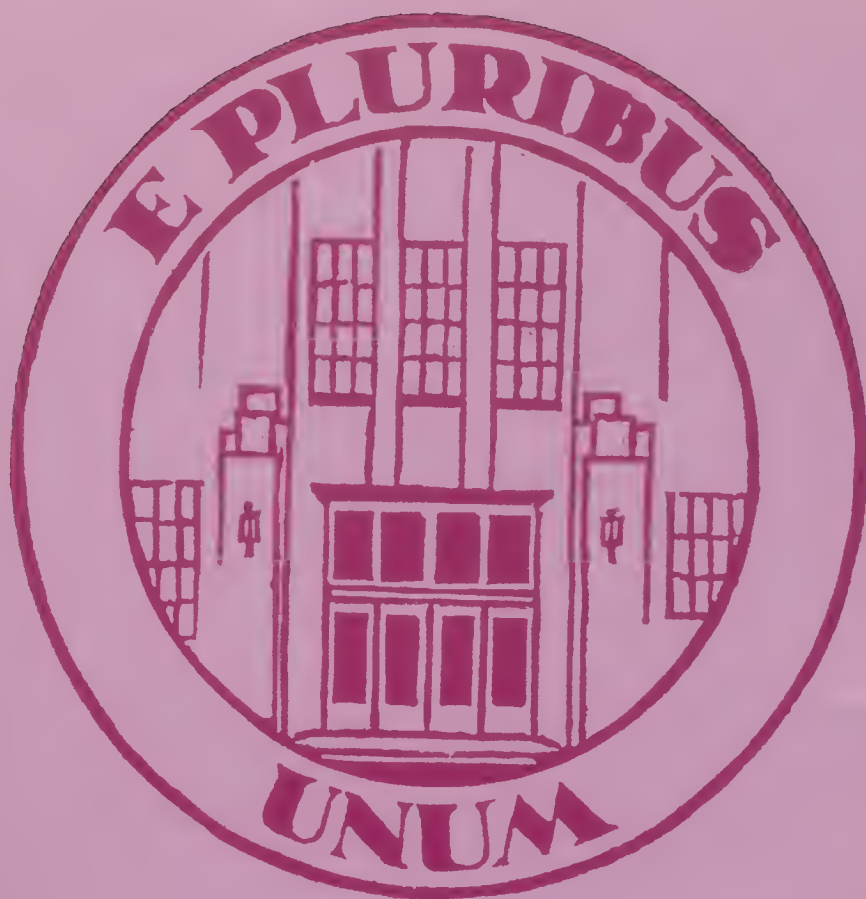
---

1939



**JOHN R. ROGERS HIGH SCHOOL**  
SPOKANE, WASH.

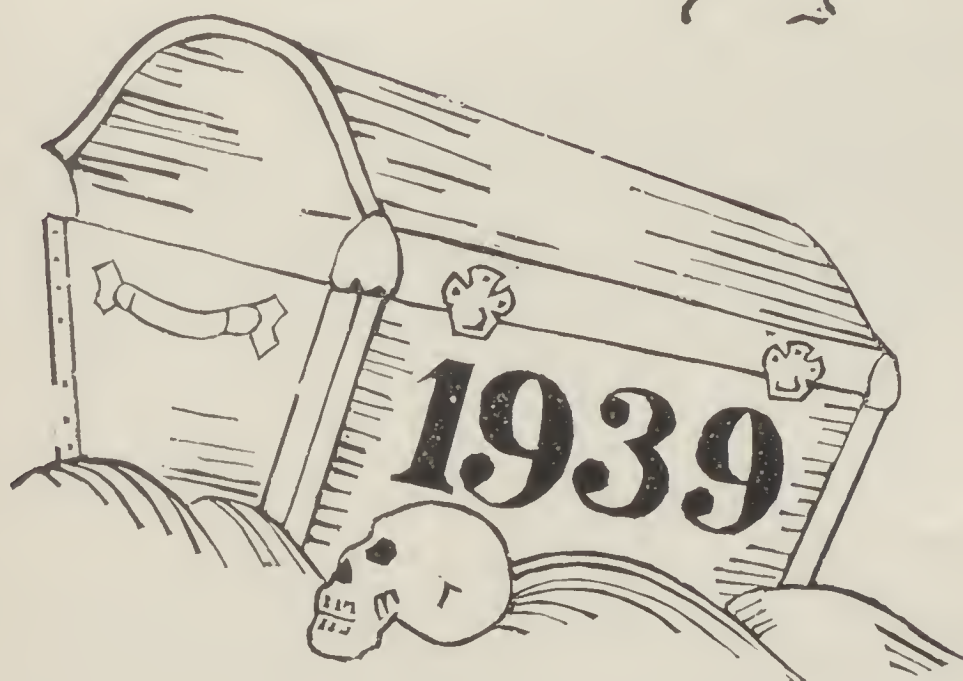




. . . *Ex Libris*



# Treasure Chest



*Published by the*  
**ASSOCIATED STUDENTS**  
*—of—*  
**JOHN R. ROGERS HIGH SCHOOL**  
**SPOKANE, WASHINGTON**

## EDITORS

Alveretta Culbertson  
James Ure

Phyllis Lammers  
Maxine Henry

## *Dedication*

● To the two famed field units of Rogers, the Pirettes and the Drum and Bugle Corps, which have put forth their utmost to add spirit and color in the many Athletic Contests and Civic Affairs, we dedicate this, the 1939 Treasure Chest.



J. M. TEWINKEL  
*Director of Pirettes*



GLENN B. STARR  
*Director of Drum and Bugle Corps*





## *Drum and Bugle*

Leader, Culbertson. **First Row:** Fairburn, Mors, Fletcher, Grinn, Tec, E. Smith, De For, and Olson. **Second Row:** Reeder, O'Leary, Reamer, Perry, Cutler, and Bell. **Third Row:** Rodolph, T. Anderson, Waters, Langbehn, P. Anderson, and Nelson. **Fourth Row:** Richardson, Thomas, Case, Sturr (adviser), Kirkpatrick, Hobbs, and G. Smith.



## *Pirettes*

**First Row:** W. Watts, N. Watts, Harris, Sicilia, Helean, McCormack, Hodge, West, Murphy, Gaines, Diehl, McCafferty, Walker, Jackson, Lowther, and Priano. **Second Row:** Whitmore, A. Armstrong, Burns, Hanifen, Olney, Bend, Shores, Bryant, McGee, Doyle, Morse, Hughes, Wilson, Henry, and Harper. **Third Row:** Yarrol, Cook, Teraceno, Gloss, Blaire, Shirley, Tucker, Woodward, Birdsell, May, Phillips, Odean, and Smith. **Fourth Row:** Luse, Gau, Bernstein, M. Erickson, Ratliff, Brooks, Moran, Simpson, Bridewell, Smilie, Pierce, A. Erickson, Kiefer, and Maddox.

In Memoriam

*Betty Lemon*

*1924-1938*

*"We loved none other more than she  
But God, needing her more than we,  
Sent a heavenly angel down  
To add a jewel to her crown."*





## *Alma Mater*

---

In the golden sunset of the Westland  
None her splendor to deny,  
Staunch and noble stands our Alma Mater,  
We love thee, Rogers High!  
In each contest we'll uphold thee,  
Lift thy banner to the sky.

As of old the Red man bowed to Rogers  
As he marched with head held high,  
So our foes, whatever the endeavor,  
Will bow to Rogers High!  
Ever loyal, Alma Mater  
We will shout thy name on high.

When our days within thy walls are ended,  
And the years fly swiftly by,  
Backward we shall turn with wistful gaze  
To the days at Rogers High!  
Loyal hearts, our strong devotion  
We will pledge thee till we die.

Rah, Rah, Rah, Rah, Rah, for mighty  
Rogers  
We sing of Rogers High.



J. D. MEYER  
*Principal*

## *Administration*



E. R. JINNETT  
*Vice-Principal*



First Row: Byrne, Osborne, Smith, Perkins, Smith, LeFevre, Jinnett, Swann, MacGown, Simet, Coburn, Meyer. Second Row: Minzel, Doolittle, Rea, McMahan, Benjamin, Morrison Swenson, Van Austene, Bovee, Hughes, Purdy. Third Row: Herrington, Hubbell, Starr, Trezona, Elsensohn, Harmon, Kapek, Slater, Webb, Becher. Fourth Row: Aumann, Herrington, Mikkelsen, Barton, Finnegan, Stevens, Budwin, Weymouth, Ellingsen, Eaman. Fifth Row: Black, Herbert, Saltz.

## Faculty

### ADMINISTRATION

J. D. Meyer, Principal  
E. R. Jinnett, Vice-Principal  
Rose Finnegan, Girls' Adviser  
Monroe Hubbell, Boys' Adviser  
Carolyn A. Kapek, Librarian  
Mary Slater, Study Hall  
Blanche Hill Swenson, Study Hall  
Leta Osborne, Study Hall  
Evelyn Meranda, Secretary  
Frances Cowles, Stenographer and Book Clerk

### ENGLISH

Joseph M. Tewinkel, Head  
Theodora Budwin  
Clarissa Harman  
Elizabeth Herbert  
Ray G. Hubbard  
Ruth Swann  
Norman Trezona, (part time)  
Faye C. Weymouth  
Paul MacGown

### COMMERCIAL

A. P. Coburn, Head  
Monroe Hubbell  
Rene G. McMahan  
Jack Mooberry  
Bernice Simet  
Ethel Van Austene

### MUSIC

Glenn B. Starr  
Blanche Hill Swenson

### SCIENCE

L. W. Saltz, Head  
James Eaman  
Carl Ellingsen  
J. W. Black  
Irvin R. Minzel

### MATHEMATICS

Walter E. Doolittle, Head  
W. L. Herrington  
J. L. Purdy  
Gertrude Rea, (Part time)

### SOCIAL SCIENCE

L. T. Byrne, Head  
E. T. Becher  
James Elsensohn  
Iva Morrison  
A. Louise Smith

### FOREIGN LANGUAGES

Marion G. Le Fevre  
Marie Bovee

### MANUAL AND FINE ARTS

A. R. Barton  
F. C. Hughes  
C. E. Russum  
F. Dale Smith

### HOME ECONOMICS

Edna Herrington  
Charste Mikkelsen  
Lucille Youngman, (Part time)

### PHYSICAL EDUCATION

Mabel Perkins  
M. J. Benjamin

# Rogers in the Lime Light



1. Library.  
2. Auditorium.

3. Metal shop.  
4. Food room.

5. Record office.  
6. Metal workers.

7. Chemistry laboratory.  
8. Wood shop.

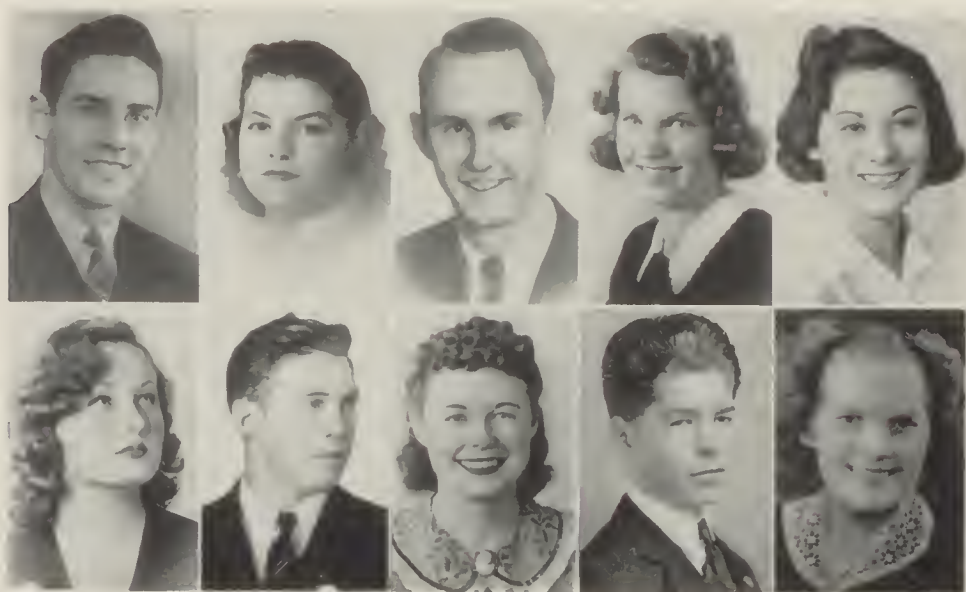




. . . Classes







ERTEL  
ZUMHOFF

LUSE  
PETERSON

MCBREEN  
DRAKE

MCGHEE  
STANSBURY

BOSSIO  
OLSON

## January Class Leaders

Miles Ertel .....	Class Prexy
Marie Zumhoff .....	Artist
Kathryn Luse .....	Valedictorian
Irving Peterson .....	Athlete
Joe McBreen .....	Boys' Federation
Lloyd Stansbury .....	Drum Major
Esther Bossio .....	Student Council
Winnie Mac Drake .....	Girls' League
Beulah McGee .....	Salutatorian
Evalyn Olson .....	Editor

## January Senior Honor Roll

Kathryn Luse  
Beulah McGhee  
Mamie Hinz  
Gladys White  
Thaddius Oster

Esther Bossio  
Arthur True  
Norma Thompson  
Fern Ray  
Marian Ponto

Miles Ertel  
Edna Mae Anderson  
Lloyd Stansbury  
Roy Williams

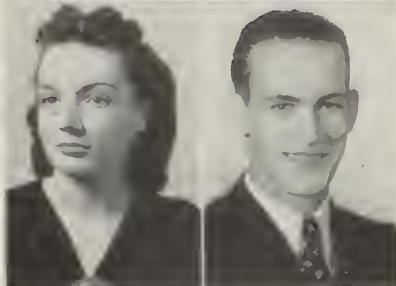
ELTON ALLEN  
*Longfellow*  
"R" Club (4)  
Football (2, 3, 4)  
Record Staff (4)  
Boys' Federation Rep.

"Ell"



CLAUDE ANDERS "Claudie"  
*Libby Junior High School*  
Vice-President of Home Room  
(3)  
Footlights Club (4)  
Quill and Scroll (4)  
Inter-Class Basketball (4)  
Record Staff (4)  
Cub Staff (4)  
Record Con (4)  
Footlights Con  
Inter-School Con (4)

EDNA MAE ANDERSON "Dutch"  
*Mead*  
National Honor Society  
Vice-President, Sophomore  
Class  
President Sophomore Class  
Basketball  
Glee Club  
Dramatics (3, 4)



JAMES BARSTAD "Jim"  
*Libby Junior High*  
Art Club (3, 4)  
Boys' Federation

VIOLET BAUER "T"  
*Hamilton*  
Harding Debate Club  
Secretary of Harding Debate  
(4)  
Glee Club  
Mixed Chorus  
"Lucky Jade"  
"The Buccancer"  
"Pickles"  
"Harmony Hall"  
"Hollywood Extra"



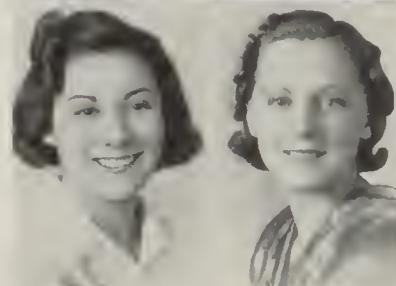
HELEN BAUMGARTNER  
*Hamilton*  
Spanish Club (2, 3, 4)  
Four Star Club, 1 year.  
Girls' League  
Handy Andy (3 semesters)

VIRGINIA BAUMGARTNER "Gee"  
*Hamilton*  
Secretary, Home Room (2)  
Chairman of Decoration for  
Social Service (4)  
Chairman of Table Manners  
for Social Service (4)  
Four Star Club (3, 4)  
Spanish Club (2, 3, 4)  
Swimming (4)  
Skating (3, 4)  
Girls' League



LAWRENCE BLANDY "Blow"  
*Logan*  
Boys' Federation

ESTHER BOSSIO "Es"  
*Bemiss*  
National Honor Society  
President, Student Council (4)  
Treasurer, French Club (4)  
Student Council Rep. (4)  
Girls' League Rep. (3)  
Chairman of Scrapbook  
Committee (2)  
Record Staff, Feature Editor  
(4)  
Cub Editor (4)  
Annual Staff (4)  
Girls' League Gossip (3)  
Christmas Committee (1)  
Big Sister (4)  
Public Utility (3, 4)  
Chairman, Publicity  
Committee for Prom.  
Senior A Honor Roll



BEATRICE BRAASCH "Betty"  
*West Valley*  
Four Star Club (4)  
Volleyball (4)  
Swimming (4)  
Tennis (4)  
Girls' League

JOHN CADY "Jack"  
*Arlington*  
Rifle Club  
Record Staff  
Boys' Federation  
Outdoor Life Department



ALTON CANTER "Alton"  
*Longfellow*  
Economics Award  
Boys' Federation

ESTHER CARLSON "Esther"  
*Bemiss*  
Secretary, O. G. A (4)  
"C" Club (2)  
Girls' League  
"Pickles"  
"The Lucky Jade"



DOUGLAS CARTER "Chub"  
*Arlington*  
Secretary, Radio Club (4)  
Vice-President, Radio Club  
(4)  
Charter Member, Radio Club  
Band (1, 2, 3, 4)  
Cub Staff (4)  
Boys' Federation Home Room  
Representative (4)

JACK CARTER "Dopo"  
Arlington  
Golf (4)  
Football Patrol (3, 4)  
Hall Patrol (1, 2, 3, 4)

HOWARD CLIFFORD "Cliff"  
Libby Junior High  
Secretary, Home Room (3)  
Boys' Federation Rep. (3)  
Vice-President, Home Room  
(4)  
Sergeant-at-Arms, Home Room  
(4)  
Sports Editor, Record Staff  
(4)

ETHEL COX "Et"  
North Central  
Home Economics Club  
(2, 3, 4)  
Baseball (2)  
Volleyball (2)  
Dramatics (4)  
Record Staff (4)  
Social Service (4)  
Vocational Department (4)  
Girls' League Advisor's Office  
Home Room Roll Checker  
(3, 4)  
Honor Roll of Girls' League  
Study Hall (4)  
Skating (4)

WINNIE MAE DRAKE "Windy"  
Bemiss  
National Honor Society  
President, Girls' League  
President, Girls' Inter-School  
Council  
President, Home Room (4)  
Vice-President, Art Club (3)  
Art Club (2, 3, 4)  
Student Council  
Harding Debate (3, 4)  
Girls' Athletic Club (4)  
Volleyball (1, 2, 4)  
Basketball (2, 3)  
Tumbling (2)  
Swimming (3)  
Paint Crew (2, 3, 4)  
Girls' League Honor Roll  
Secretary, Puppetry  
Senior Prom Committee

PEARL FAMES "Pearl"  
Hamilton  
Treasurer, Spanish Club (3)  
Chairman, Scrapbook  
Committee (3)  
Vice-President, Home Room  
(4)  
Chairman, Entertainment at  
Dances  
Vice-President, Social Service  
Footlights Club (3, 4)  
Junior Dramatics Club (1, 2)  
Spanish Club (2, 3, 4)  
"C" Club (3)  
Skating (3, 4)  
Dancing (3, 4)  
"Harmony Hall"  
Spring Sports Queen  
Girls' League  
Handy Andy

RALPH FARANO "Ralph"  
Regal  
President, Radio Club (4)  
Radio Club, (3, 4)  
Boys' Federation Rep.  
Senior Graduation Play

CHARLES GUMM "Chuck"  
Cooper  
National Honor Society  
Junior Dramatic Club  
President (2)  
Sergeant-at-Arms, Junior  
Dramatic Club (1)  
Vice-President, Montero Club  
Vice-President, Senior Class  
Vice-President, Student  
Council (3)  
Operetta (1)  
All School Play (4)  
Senior Prom Committee,  
Chairman

MARY JANE CASS "Bones"  
Longfellow  
Band (3, 4)  
Orchestra (2, 3, 4)  
Girls' League

EILEEN COWLES "Leen"  
Prince Albert Collegiate  
High  
Treasurer, Spanish Club (4)  
Footlights Club (3)  
Spanish Club (3, 4)  
Math Club (4)  
Girls' League - Social Service  
Department  
Handy Andy (2 semesters)

LOIS CRANE "Lois"  
Libby Junior High  
Sub-Chairman, Dramatics  
Department (4)  
Sub-Chairman, Social Service  
(4)  
Secretary, History Class (4)  
Art Club (2, 3, 4)  
Four Star Club (3)  
Spanish Club (3, 4)  
Swimming  
"Abie's Irish Rose"  
"Once in a Lifetime"  
Senior Graduation Play.

ALDREY NELL DUFFY "Cookie"  
Nespelem  
Chairman, Tickets Committee  
Dad and Daughter Banquet  
Sub-Chairman, Introductions  
(4)  
Staff of Girls' League  
Gossip (3, 4)

MILES ETEL "Turtle"  
Regal  
National Honor Society  
Vice-President, French Club  
(3)  
President, French Club (4)  
President, Cosmic Club (4)  
Secretary, Montero Club (4)  
Vice-President, Student  
Council (4)  
President, Senior "A" Class  
Sergeant-at-Arms, French Club  
(4)  
President, National Honor  
Society (4)  
French Club (3, 4)  
Montero Club (3, 4)  
Cosmic Club (3, 4)  
Student Council (3, 4)  
Boys' Federation Scholarship  
Committee (3)  
Senior Honor Roll  
Business Manager, Queen  
Contest (4)  
Hall Patrol  
School Play, "Once in a  
Lifetime"

JOHN GOANS "Gobby"  
Lewis and Clark  
Boys' Federation

ADDALINE P. HANN "Ham"  
Whitman  
Rogers Service Club (3, 4)  
Student Council (3)  
Big Sister (4)  
Home Economics Club (4)  
Volleyball (1)  
Study Hall Roll Checker (4)



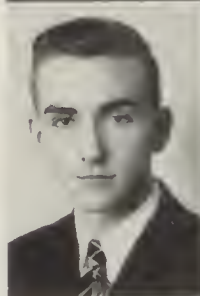


VERVA HANSON "Verv"  
*Culdesac, Idaho*  
 Footlights Club (3, 4)  
 Girls' League  
 Glee Club (2, 3)  
 Advanced Choir (3, 4)  
 Record Staff (4)  
 Student Council (3)  
 "The Buccaneers"  
 "Harmony Hall"  
 "Hollywood Extra"  
 Hall Patrol (3, 4)



DAWNELDA HICKS "Down"  
*Cooper*  
 National Honor Society  
 Secretary, Footlights Club (4)  
 Secretary, Home Economics Club (4)  
 Secretary, Home Room (3)  
 Junior Dramatic Club (1, 2)  
 Footlights Club (3, 4)  
 Home Economics Club (2, 3)  
 Basketball (1, 2)  
 Baseball (1, 2)  
 Volleyball (1, 2, 3)  
 Girls' League  
 "Once in a Lifetime"  
 Orchestra (1, 2)  
 Record Staff (4)  
 Student Council (4)  
 Footlights Con  
 Record Staff Con

JAY HANSON "Jay"  
*North Central*  
 Vice-President, Home Room (4)  
 Boys' Federation  
 Cub Staff Rogers Record



EDITH HOVE "Ede"  
*Lewis and Clark*  
 Business Staff, Rogers Record (4)  
 Gym Office (2, 3)  
 Girls' League

CHARLES JENKINS "Bill"  
*Otis Orchard*  
 Hall Patrol (4)  
 Boys' Federation



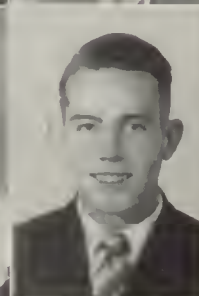
HALDA JOHNSON "Hilda"  
*Lewis and Clark*  
 President, Social Life  
 Girls' League

RICHARD JOHNSON "Dick"  
*Regal*  
 Sergeant-at-Arms, Art Club (3)  
 Art Club (3, 4)  
 Boys' Federation



ELMER KROMM "Elm"  
*Arlington*  
 Service Group  
 Boys' Federation  
 Football Patrol  
 Boys' Federation Scholarship Committee

LAVERGNE KYARSGARD "Tiny"  
*Regal*  
 Harding Debate, President (4)  
 Home Room, Vice-President  
 Girls' League Representative  
 Harding Debate Club (3, 4)  
 Volleyball (Captain of Sophomore Team)  
 Editor of Cub Issue  
 Girls' League



DEAN LADD "Dean"  
*Bemiss*  
 Honor Roll (1, 2)  
 Vice-President, Art Club (3)  
 Secretary, Rifle Club (3)  
 Rifle Club (3, 4)  
 "R" Club (4)  
 Track (2)  
 Rifle Team (3, 4)  
 "Lucky Jade"  
 Armistice Play

PHYLLIS LAMMERS "Fleecy"  
*Longfellow*  
 Rogers Service Club (4)  
 Vice-President, Quill and Scroll  
 Movie Camera Committee  
 Cub Edition  
 O. G. A. Club (4)  
 Record Staff (4)  
 Treasure Chest Staff (4)  
 Associate Editor, Treasure Chest (4)  
 Lake Naming Contest Committee  
 Glee Club (1, 2)



JACK LINDEN "Swede"  
*Arlington*  
 Vice-President, Art Club (4)  
 Art Club (2, 3, 4)  
 Golf (4)  
 Boys' Federation  
 Chorus (3, 4)  
 "Harmony Hall"  
 "Hollywood Extra"  
 Hall Patrol

KATHRINE LUSE "Kay"  
*Bemiss*  
 Valedictorian  
 National Honor Society  
 Student Council (1, 2)  
 Rogers Service (4)  
 Home Room President (2)  
 Secretary, Home Room (4)  
 Treasurer, Home Room (3)  
 Vice-President, Spanish Club (3)  
 Sub-Chairman, Handicraft Department (2)  
 Spanish Club (2, 3, 4)  
 Basketball (2)  
 Girls' League  
 Girls' League Honor Roll  
 Big Sister, Tutor  
 Scholastic Honor Roll  
 Camera Committee  
 Puppetry  
 Graduation Play  
 Senior Prom Committee  
 Senior Honor Roll



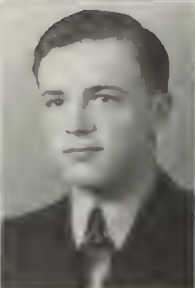
JOE MCBREEN, JR. "Jo Jo"  
*Arlington*  
 President, Boys' Federation (4)  
 Secretary, Senior Class  
 President, Harding Debate (3)  
 President, Home Room (3, 4)  
 President, Montero (4)  
 Sergeant-at-Arms, "C" Club (4)  
 Junior Dramatic Club (2)  
 Football (1, 2, 3)  
 Basketball (1, 2)  
 Baseball (1, 2, 3, 4)  
 Orchestra (1, 2, 3, 4)  
 Dramatics (4)

BEULAH MCGHEE "Soup"  
*Whitman*  
 National Honor Society  
 Salutatorian  
 Chairman, Puppetry  
 Department  
 Rogers Service Club  
 Home Room Representative  
 Secretary, Home Room (2)  
 Art Club (3, 4)  
 Home Economics Club (3, 4)  
 Record Staff  
 Senior Honor Roll  
 Girls' League Council



MAXINE MCMANN "Mac"  
*Longfellow*  
 Basketball  
 Tennis  
 Volleyball  
 Baseball  
 Business Staff, Rogers Record  
 (3)  
 Business Manager, Rogers  
 Record (4)  
 Student Council (1, 3)  
 "Lucky Jade"  
 Girls' League Honor Roll  
 (1, 2)

LAVERNE MARIER "Bud"  
*St. Xavier*  
 President, Boys' Departmental  
 —Gym  
 "R" Club (2, 3, 4)  
 Football (2)  
 Baseball (1, 2, 3, 4)



LEO MOFFATT "Bev"  
*Whitman*  
 Vice President, Home Room  
 Sergeant-at-Arms, Home Room  
 President, Outdoor Life  
 (1 semester)  
 "R" Club (3, 4)  
 Tennis (1, 2, 3, 4)  
 Hockey (3)  
 Annual Staff (4)  
 Armistice Day Play  
 Boys' Federation  
 Sports Editor, Cub Edition

DELORES MOON "Dodie"  
*Hamilton*  
 Girls' League Rep. (4)



ARCADE MORELAND "Shorty"  
*Hamilton*  
 Band (2, 3, 4)

MERRILL NORTH "Merrill"  
 Boys' Federation

AGNES MUNTHIER "Aggie"  
*Bemiss*  
 Volleyball (1)  
 Operetta (3)  
 Christmas Program (2, 3)  
 Girls' League Chorus (3, 4)  
 Girls' League



BEN OBERG "Bennie"  
*Longfellow*  
 President, Home Room (2)  
 Secretary, Home Room (4)  
 Yell Leader (1)  
 "R" Club (3, 4)  
 Football (1, 4)  
 Baseball (1, 4)  
 Basketball (1)  
 Cub Staff  
 Boys' Federation

ELMER OAS "Oats"  
*Longfellow*  
 Freshman Advisor  
 Harding Debate (3, 4)  
 "R" Club (3, 4)  
 Football (1, 2, 3, 4)  
 Baseball (1, 3)  
 Golf (3)  
 Track (1, 2, 4)  
 Hockey (4)  
 Band (1, 2, 3, 4)  
 Boys' Federation

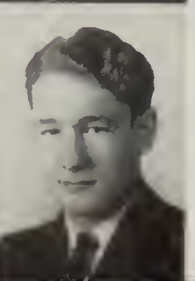


EVALYN OLSON "Evie Ole"  
*Longfellow*  
 Rogers Service Club  
 Quill and Scroll (3, 4)  
 Editor-in-Chief of Rogers  
 Record  
 Technical Advisor of Rogers  
 Record  
 Vice-President, Quill and  
 Scroll  
 Student Council (4)  
 Lieutenant Drum-Majoress  
 (4)  
 Assignment Editor of Record  
 (3)  
 Secretary, Quill and Scroll (4)  
 Girls' League Rep. (3)  
 Volleyball (1, 2, 3)  
 Basketball (1, 2, 3)  
 Skating (3)  
 Baseball (1, 2, 3)  
 Swimming (2, 3)  
 Badminton (3)  
 Tennis (2, 3)  
 Tumbling (1, 3)  
 Captain of Baseball team (3)  
 Song Leader (4)  
 Pirette Girls' (1, 3, 4)  
 Annual Staff (3, 4)  
 Record Staff (3, 4)  
 Editor of Girls' League  
 Gossip (3)  
 Girls' League Honor Roll  
 Girls' League Council  
 Big Sister (4)  
 Main Office (3)  
 Nurses' Office (3)  
 Advisor's Office  
 Study Hall Checker (3, 4)  
 Library Assistant (2, 3)  
 Queen Contest (4)  
 Rogers Freshmen Handhook  
 Committee  
 Glee Club (1, 2)

PATRICIA O'GRADY "Pat"  
*Whitman*  
 Rogers Service Club  
 President, Home Room (4)  
 Secretary, Home Room (4)  
 Home Economics Club  
 (1, 2, 3, 4)  
 Tennis Team  
 Girls' League



TED OSTER "Teddy-Weddy"  
*Regal*  
 Rogers Service Club  
 National Honor Society  
 Vice-President, 9-A (1)  
 Treasurer of Montero Club  
 (2, 3)  
 "R" Club (3, 4)  
 Harding Debate (2, 3, 4)  
 Montero Club (2, 3, 4)  
 Cosmic Club (3, 4)  
 Football (1, 2, 3, 4)  
 Basketball (1, 2, 3)  
 Track (1, 2, 3)



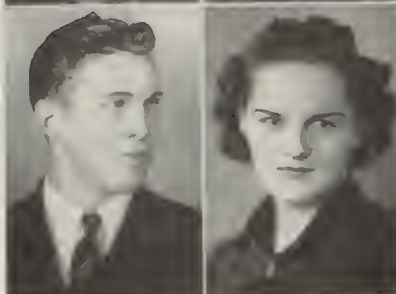
MARTIN PALMQUIST "Palmie"  
*Longfellow*  
 Sergeant-at-Arms, French  
 Club (3)  
 French Club (3, 4)  
 Radio Club (3)  
 Boys' Federation

LEE PATCHEN "Lee"  
Spanish (2, 3, 4)  
Rifle Club (2, 3, 4)  
Advertising Staff (2, 3, 4)  
Track (4)



HAROLD PAYNE "Bud"  
West Valley  
Student Council (3)  
"R" Club (3, 4)  
Harding Debate Club (3, 4)  
Four Star Club (2, 3)  
Football Manager (2, 3, 4)  
Basketball Manager (2)  
Debate Squad (4)

IRVING PETERSON "Pete"  
Libby  
"R" Club (3, 4)  
Football (3, 4)  
Track (3, 4)  
Fire Squad (4)  
Boys' Federation



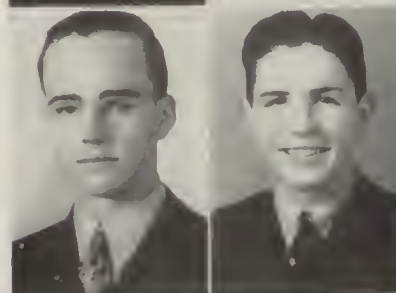
MARIAN PONTO "Ponticus"  
Libby  
National Honor Society  
Senior Honor Roll  
Treasurer, Art Club (4)  
Corresponding Secretary, Art Club (4)  
Scribe, Harding Debate (4)  
President, Quill and Scroll (4)  
Art Club (3, 4)  
Four Star (3, 4)  
Harding Debate (4)  
Quill and Scroll (4)  
Baseball (3)  
Chairman, Scrapbook Committee  
Glee Club (2)  
Mixed Chorus (3)  
"Harmony Hall" (3)  
Record Staff (4)  
Girls' Sports Editor  
Annual Staff (4)  
Circulation Manager (4)  
Honor Roll (3, 4)  
Student Council (4)  
Hall Patrol (4)  
Library Worker (3)  
Gym Office (4)

FERN RAY "Fern"  
Cooper  
Big Sister  
Senior Honor Roll  
Girls' League



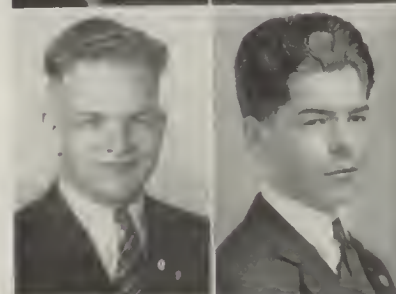
ARLENE RUARK "Arlene"  
Regal  
Photoplay (1)  
Home Economics Club (3, 4)  
"Once in a Lifetime" (4)  
Tennis Team (1, 2)

EUGENE SANDBERG "Sandy"  
Longfellow  
"R" Club (4)  
Football (3, 4)  
Basketball (3, 4)  
Track (2, 3)  
Basketball Manager (3)  
Boys' Federation



RUDOLPH SHAW "Mushy"  
Arlington  
Basketball (2)  
Tennis (4)  
Annual Staff (4)  
Boys' Federation  
Armistice Day Play  
Assistant Sports Editor, Cub Edition

HARRY SPARKS, JR. "Porky"  
Lewis and Clark  
Radio Club (3)  
Sergeant-at-Arms, Radio Club  
"R" Club (3, 4)  
Football (2, 3, 4)  
Track (2)  
Hockey (4)  
Basketball (2)  
Boys' Federation



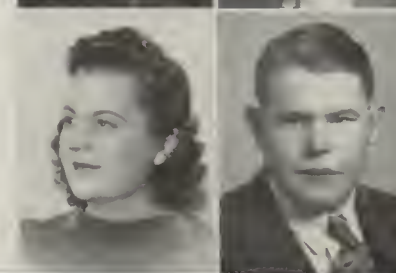
LLOYD STANSBURY "Speed"  
Whitman  
National Honor Society  
Senior Honor Roll  
Scholastic Honor Roll (3, 4)  
Cosmic Club (4)  
Band (3, 4)  
Drum Major (4)  
Orchestra (4)  
Boys' Federation

MARJORIE STEELE "Marge"  
Lewis and Clark  
Volleyball (1, 2)  
Basketball (1, 2, 3)  
Baseball (1)  
Tumbleline (2)  
Cub Staff  
Record Staff  
Gym Office (3)  
Girls' League



GEORGE STEFN "Geo"  
Arlington  
Ili-Y Club (4)  
Cosmic Club (4)  
Radio Club (3, 4)  
Vice-President, Radio Club  
Treasurer, Radio Club  
Math Club  
Home Room President (4)  
Vice-President, Home Room (4)  
President, Handicraft (4)  
Chairman, Traditions Committee (4)  
Chairman, Christmas Committee (4)  
National Honor Society  
Student Council Rep. (1, 2, 3, 4)  
Boys' Federation Nominating Committee (4)  
Senior "A" Nominating Committee (4)  
Social Committee (3, 4)

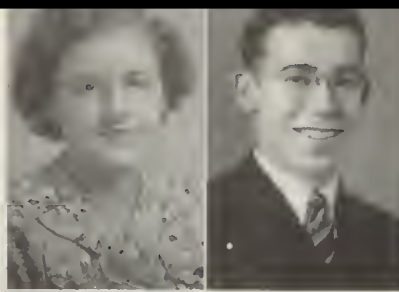
DOROTHY THOMAS "Dottie"  
North Central  
Girls' League



JOE TOBLER "Joe"  
Logan  
Boys' Federation

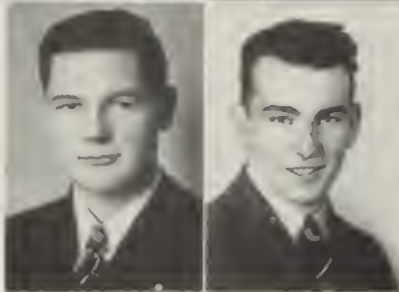


IOLA MAY TOBLER "Toby"  
*Logan*  
 Volleyball (3)  
 Baseball (2)  
 Girls' League  
 Invitation Chairman, Dad-Daughter Banquet  
 Study Hall Worker



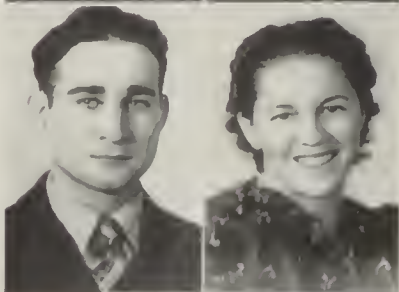
LYOYD TRERISE "Boscoc"  
*Bemiss*  
 Hall Patrol  
 Sergeant-at-Arms, Home Room (3)  
 Vice-President, Home Room (3)  
 Track (1, 2)  
 Inter-Class Basketball (1, 2, 3, 4)  
 Boys' Federation

ARTHUR TRUE "Art"  
*Regal*  
 National Honor Society  
 Senior Honor Roll  
 Vice-President, Radio Club (3)  
 President, Radio Club (4)  
 Radio Club (3, 4)  
 Fire Squad  
 Boys' Federation  
 Scholarship Committee



ALAN UPDIKE "Dike-um"  
*Arlington*  
 Sergeant-at-Arms, French Club (3)  
 Treasurer, Radio Club (4)  
 Sergeant-at-Arms, Radio Club (3)  
 "R" Club (3, 4)  
 Football (2, 3, 4)  
 Golf (3, 4)  
 Debate (3, 4)  
 Spring Sports Chairman (4)  
 Student Council  
 Inter-school Relations Committee  
 Track (4)

SAMUEL VENTIMIGLIO "Venti"  
*Gonzaga*  
 Rogers Service Club  
 Student Council  
 Honor Roll  
 Boys' Federation Representative  
 "C" Club (2, 3, 4)  
 Junior Dramatics (1, 2)  
 Dramatic Chairman  
 Harding Debate (3, 4)  
 President, Entertainment (4)  
 Fire Squad (4)  
 Senior Prom Committee  
 Football (1)  
 Basketball (1)  
 "Submerged"  
 "Once in a Lifetime"  
 "Buccaneers"  
 "Harmony Hall"  
 "Hollywood Extra"  
 Chorus (2, 3, 4)  
 Student Broadcast  
 All-City Chorus  
 Journalism, Cub Staff  
 Boys' Federation



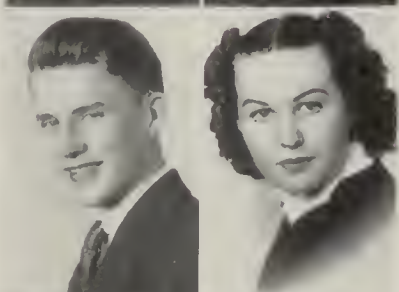
VERA WAKELEY "V'era"  
*Arlington*  
 Main Office (4)  
 Miss Finnegan's Office (4)  
 Girls' League

ALBERT WARD "Al"  
*Santa Ana, California*  
 Football (1, 2)  
 Basketball (1, 2)  
 Football Patrol  
 Boys' Federation



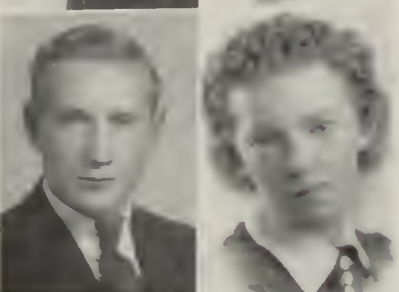
BETTY WARD "Betsy"  
*Bemiss*  
 "Pickles"  
 "Lucky Jade"  
 Girls' League

ROBERT WATTS "Bob"  
*Hamilton*  
 Boys' Federation



GLADYS WHITE "Gladys"  
*Hamilton*  
 Rogers Service Club  
 National Honor Society  
 President, Home Room (4)  
 Student Body Treasurer (3, 4)  
 O. G. A. Club (4)  
 Big Sister  
 Nomination Committee for Senior "A's"  
 Senior Prom Committee

ROY WILLIAMS "Willie"  
*Bemiss*  
 9-A Class President  
 Student Council  
 Football (1, 2)  
 Track (3)  
 Record Staff  
 Home Room President  
 Hall Patrol  
 "R" Club (3, 4)  
 Senior Honor Roll  
 German Club  
 Vice President, German Club



GENEVA WINTERS "Jean"  
*Columbia*  
 Pirettes (1)  
 Gym Office (1)  
 President, Home Room

RUTH YOUNG "Ruth"  
*North Central*  
 Girls' League



MARIE ZUMHOFF "Zummie"  
*Longfellow*  
 Rogers Service Club  
 Girls' League Honor Roll (2, 3, 4)  
 Vice President, Art Club (3)  
 Secretary, Art Club (2)  
 Art Editor of Rogers Record (2, 3, 4)  
 President, Home Room (3)  
 Manager, Paint Crew (3)  
 Secretary of Girls' League Footlights Club (3)  
 Girls' League Council (3, 4)  
 Stage Crew (2, 3, 4)  
 Student Council (2)  
 Girls' Inter-High School Council (4)  
 Art Editor, Girls' League Gossip (3)  
 Girls' League Representative (2)  
 Home Room Representative (3)  
 Secretary, Puppetry Department (3)  
 Chairman, Puppetry Department (2)

## January Class History

---

● Leaving four years of high school behind them, 96 students were handed their diplomas Tuesday evening, January 24.

Kathryn Luse led the class scholastically, while Beulah McGhee gained the honor of Salutatorian.

Miles Ertel was class president, aided by Charles Gumm as vice-president; Joe McBreen, secretary; and Norma Thompson, treasurer. Esther Bossio was Student Council president during the last semester of the class.

## January Commencement

---

● At the January class graduation, the school motion picture camera was first operated before the general public. Eight minutes of film, part in color, were shown of school activities.

Led by Ted Oster as attorney for complaints, and Charles Gumm, defense attorney, the members of the special senior English class gave a play in the form of a hearing conducted by the school board. Ralph Farano, as chairman of the school board, gave their decision after hearing the witnesses.

Winnie Mac Drake, Hilda Johnson, Audrey Duffy, Mary Jane Cass, Arcade Moreland, and Florence St. Onge enacted the parts of parents who disapproved of certain phases of school life, while Edith Hoyer, Patricia O'Grady, Eugene Sandberg, Martin Palmquist, and Pearl Eames were the students who upheld the present curriculum.

Phyllis Lammers, Fern Ray, Esther Bossio, and Kathryn Luse comprised the members of the school board.

## Senior Autographs

---

SWARTZ  
CULBERTSONJOHNSON  
WAKELEYDANIELSON  
BETTENCASEY  
RATLIFFBERG  
SMITH

## June Class Leaders

Bob Swartz .....	Class Prexy
Alveretta Culbertson .....	Drum Major
Rosina Johnson .....	Valedictorian
Charles Wakeley .....	Athlete
Bob Danielson .....	Boys' Federation
Eleanor Smith .....	Salutatorian
Helen Ratliff .....	Girls' League
Paul Betten .....	Editor
Ralph Berg .....	Student Council
Mamie Jean Casey .....	Dramatics

## June Senior Honor Roll

Rosina Johnson  
Eleanor Smith  
John Petty  
Vivian Larson  
Ellen Pershall  
Helen Ratliff  
Beatrice Drury  
Roland Dhondt  
Grant Anderson  
Dorothy Schendel  
Mary Eleanor Sullivan  
Doris Montague  
Delores Bell  
Ethylle Anderson  
Flora Curryer  
Helen Jorgenson

Gladys Smith  
Bob Swartz  
Maxine McKinney  
Marguerite Bullard  
Jeanette Hendrickson  
Mamie Jean Casey  
Alton Hassell  
Ralph Berg  
Bob Danielson  
Don Carter  
Roy Bishop  
Don Hughes  
Otho Nelson  
Frank Rotondo  
Paul Betten  
Albert Gayda

James Hayes  
Virginia Cutler  
Margie Simonson  
Marian Bonser  
Warren Saltz  
Albert Akins  
James Turner  
Marvin Ayler  
Ruth Hetherington  
Earl Terry  
Hazel Bronson  
Frances Williamson  
Ida Kuesterman  
Maxine Henry  
Dorothy Tee  
Erna Lipps



ALBERT AKINS "Al"  
*Willard*

National Honor Society  
President Home Room (3)  
President Math Club (4)  
Treasurer German Club  
Boys' Federation  
Representative  
Math Club  
German Club  
Cosmic Club  
"R" Club  
Harding Debate Club  
Football (1, 2, 3, 4)  
Baseball (1, 4)  
Basketball (1, 2, 3, 4)



ETHYLLE ANDERSON "Andy"  
*Libby Junior*  
Rogers Service Club  
Handicraft Department  
Drum and Bugle (3,4)  
Honor Roll (3,4)  
Girls' League



GRANT ANDERSON "Andy"  
*Bemiss*  
Vice-President Home Room  
(4)  
Student Council (3)  
Math Club  
Cosmic Club  
Baseball (1)  
Football (3, 4)  
Hall Patrol

MATT ALEXANDER "Matt"  
*Libby Junior*  
Boys' Federation



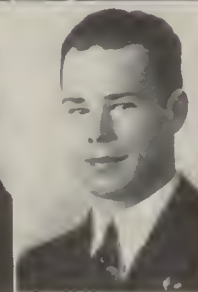
HAZEL BARKER  
*Marcus High*  
Vice-President Home Room  
Attendance Checker Home  
Room  
Four Star Club (3)  
Home Economic Club (4)  
Girls' League

MARVIN AYLER  
*Libby Junior*  
Art Club  
Boys' Federation



DELORES B. BELL "Ding-Dong"  
*Libby Junior*  
President Home Room (2)  
Assistant Director Girls'  
League Chorus (2, 3)  
Footlights Club  
O. G. A. Club  
Floor Hostess (4)  
Editor Girls' League Calendar  
(4)  
Scholastic Honor Roll  
(2, 3, 4)  
Girls' League Honor Roll  
(3, 4)  
"Harmony Hall"  
"Buccancers"  
Drum and Bugle Corps (3, 4)  
Girls, Glee Club  
Mixed Chorus (3)

EARL BARNHART "Barney"  
*Lewis and Clark*  
Stage Electrician (1, 2, 3)  
Hall Patrol (1)  
School Play, "Once in a  
Lifetime"  
Boys' Federation



RALPH BERG JR.  
*Whitman*  
National Honor Society  
President, Student Council  
Fire Squad  
President, "R" Club  
President, Home Room  
Vice-President, Montero Club  
Federation Representative (4)  
Cosmic Club (3, 4)  
Art Club (1, 2, 3, 4)  
Rifle Club (Charter Member)  
Montero Club (3, 4)  
Football (1, 3, 4)  
Track (1, 2, 3, 4)

BOB BENISH  
*Hamilton*  
Track (4)  
Boys' Federation



ROBERT BERGER "Butch"  
*Libby*  
Rogers Service Club (3, 4)  
Boys' Federation Rep. (3)  
Secretary, Home Room (4)  
President, Home Room (4)  
Sergeant-at-Arms, Footlights  
Club  
President, Footlights Club  
Executive Senior Committee  
Record Staff  
"C" Club (3, 4)

HELEN BERGEN  
*Regal*  
Girls' League



PAUL BETTEN  
*Bemiss*  
Senior Honor Roll  
President, Quill and Scroll  
Club Edition  
Record Staff  
Editor, Rogers' Record  
Annual Staff  
Boys' Federation  
Rogers Service  
Band (2, 3, 4)  
Orchestra

PAUL BERGMAN "Dutchy"  
*St. Xavier*  
Boys' Federation Rep. (3)  
"R" Club (2, 3, 4)  
Golf (4)  
Basketball (1)  
Baseball (1, 2, 3, 4)  
Boys' Federation  
Dramatic Club

DON BLACKWELL "Blackie"  
*North Central*  
 Hall Patrol (4)  
 Paddle Squad (4)  
 Boys' Federation



HERMAN BLANCHER "Dark Eye"  
*Regal*  
 Junior Dramatic Club  
 Radio Club  
 Hall Patrol  
 Boys' Federation

ALBERT BEVAN "Al"  
*Hamilton*  
 "R" Club  
 Radio Club (2)  
 Hockey (3)  
 Boys' Federation



ROY BISHOP "Bish"  
*Longfellow*  
 Fire Squad (4)  
 Hall Patrol (2)  
 "R" Club (2, 3, 4)  
 Golf (1, 2, 3, 4)  
 Baseball (1)  
 Home Room President (2)  
 Student Council (2)

ROSE BOJE  
*Marycliff*  
 Girls' League



LOUISE A. BOND "Louie"  
*Bemiss*  
 Vice-President, "C" Club (2)  
 Tennis Club  
 Tennis (3, 4)  
 Basketball (3)  
 Volleyball (1, 2, 3)  
 Tumbling (2, 3, 4)  
 Baseball (1, 2, 3)  
 Gym Office (1, 2, 3)  
 Girls' League

MARIAN BONSER "Mary Ann"  
*Bemiss*  
 Sub-Chairman, Social Life  
 Department  
 O. G. A. Club  
 "C" Club  
 Baseball (1)  
 Basketball (1)  
 Volleyball (1)  
 Cub Staff (4)  
 Record Staff (4)  
 Annual Staff (4)



HELEN BOWERS "Puny"  
 Girls' League

DOROTHY BREDESEN  
*Longfellow*  
 Vice-President, Home Room  
 (2)  
 Record Staff  
 Annual Staff



ELIZABETH BREWER "Betty"  
*Clarkston*  
 Secretary, Hiking Department  
 Volleyball (1, 2)  
 Library Worker  
 Girls' League

JAMES BREWER "Jim"  
*Hamilton*  
 Sergeant-at-Arms, Home Room  
 (3, 4)  
 Secretary, Home Room (4)  
 Cosmic Club  
 Radio Club  
 Track (2)  
 "Once in a Lifetime" (4)



HAZEL MAE BRONSON "Boots"  
*North Central*  
 Library Worker (1, 2, 3)  
 Secretary, O. G. A. Club (4)  
 Student Council Rep. (4)  
 O. G. A. Club  
 Girls' League

SYDNEY BROTHERTON  
*Regal*  
 Track (1, 3, 4)  
 Hall Patrol  
 Orchestra (3, 4)  
 Band (4)  
 Boys' Federation



DEL BROWN "Bucko"  
*Regal*  
 President, Home Room (4)  
 Vice-President, Speech Club  
 (4)  
 President, U. S. History II  
 (4)  
 "R" Club (3, 4)  
 Football (1, 2, 3, 4)  
 Basketball (1, 2, 3, 4)  
 Baseball (1, 2)  
 Boys' Federation  
 Dramatics (4)  
 Prom Committee  
 Debate

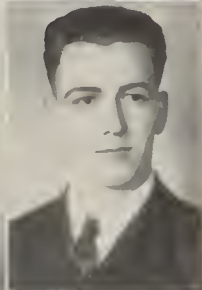
MARGUERITE D. BULLARD  
"Margie"

Arlington  
Secretary, Freshman Class  
President, Home Economics  
Club (4)  
Secretary, G. A. C. (4)  
G. A. C. Club (3, 4)  
Volleyball (1, 2, 3, 4)  
Basketball (1, 2, 3, 4)  
Baseball (1, 2)  
Tennis (3, 4)  
Tumbling (1)  
Swimming (3)  
Skating (3)  
Student Council (4)  
Campercraft Sub-Chairman (2)  
Handicraft (2, 3)  
Big Sister (3, 4)



DON CARTER "Pinkey"

Regal  
National Honor Society  
Rogers Service Club  
Home Room President (3)  
Secretary, Student Council (4)  
Secretary, Footlights Club  
(4)  
Sergeant-at-Arms, O. G. A.  
Club (4)  
Secretary, Montero Club (4)  
Treasurer, Senior Class  
Junior Dramatic Club (1, 2)  
Footlights Club (3, 4)  
Montero Club (3, 4)  
"R" Club (4)  
O. G. A. Club (4)  
Basketball (1, 2)  
Tennis (2, 4)  
Student Council (1, 2, 4)  
Hall Patrol  
Manager, Winning Spring  
Sports Queen  
Yell Leader (1, 2, 3, 4)  
Fire Squad (4)



YVONNE MARJORIE BURKE  
Bemiss  
"Pickles"  
Pirette Girls  
Girls' League

ROGER CASE  
Bemiss  
Chorus  
Boys' Federation



GEORGE CASEY  
Arlington  
Senior Prom Committee  
Hi-Y Club (4)  
Rogers Service Club  
Boys' Federation

MAMIE JEAN CASEY "Casey"  
Student Council (2)  
Chairman, Dramatics  
Department (3)  
French Club  
Junior Dramatic Club  
Footlights Club  
O. G. A. Club  
"The Whole Town's Talking"  
"Show Off"  
"The Tavern"  
"Abie's Irish Rose"  
"Once in a Lifetime"  
"Tovarich"  
Secretary, Home Room (4)

EDNA CAUDILL "Eddie"  
Libby  
Girls' League



HERB COFFEY "Herb"  
Arlington  
Art Club (4)  
Boys' Federation

ELMER CLICK "Click"  
Lewis and Clark  
Cub Staff, Rogers' Record  
Record Staff  
Annual Staff  
Cafeteria (2, 3, 4)



LOIS COX  
North Central  
Tennis (1, 2)  
Operetta '37 and '38

GEORGE W. COLLINS "Rip"  
Medical Lake High  
Sergeant-at-Arms, Speech  
Class  
Boys' Federation



ALVERETTA CULBERTSON "Etta"  
Whitman  
President, 11A Class  
Quill and Scroll  
Tumbling  
Basketball  
Volleyball  
Editor of Annual  
Record Staff (4)  
Orchestra (1, 2, 3, 4)  
Drum Majoreess (3, 4)  
Pirettes (1, 2, 3, 4)  
Drum and Bugle Corps (4)  
Band Drum Majoreess (3)  
"Once in a Lifetime"  
Song Leader (2, 3, 4)  
Know Your Schools Broadcast  
KFPY  
Girls League Honor Roll  
Study Hall Worker

DORIS CRUMBLEY "Butch"  
Bemiss  
Rogers Service Club (3, 4)  
Sub-Chairman, Social Life (4)  
Harding Debate (4)  
Four Star Club (3)  
Home Economic Club (4)  
Tennis (1, 2, 3, 4)  
Swimming (2)  
Big Sister (3)  
Gym Office (1)  
Senior Prom Committee



ISA MAE CULVER "Imie"  
Whitman  
Tutor  
Girls' League Honor Roll



JEWELL CUMMINGS "Judy"  
Kendrick  
Tennis  
Girls' League



FLORA CURRYER "Florey"  
Orchard Prairie  
Rogers Service  
National Honor Society  
Vice-President, German Class

(2)  
Secretary, German I Class  
(3, 4)  
Girls' League Rep. (2)  
Student Council (4)  
Harding Debate (3, 4)  
German Club (2, 3, 4)  
"Buccaneers"  
"Hollywood Extra"  
"Harmony Hall"  
Big Sister (3, 4)  
Girls' League Orchestra (1, 2)  
Girls' League Chorus (3)  
Orchestra (1, 2)  
Chorus (3, 4)

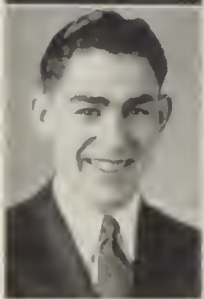
HAROLD CURRYER "Sparkey"  
Orchard Prairie  
Treasurer, Art Club (4)  
Junior Dramatic Club (1, 2)  
Footlights Club (3, 4)  
Art Club (3, 4)  
Track (1, 2, 3, 4)  
"Pickles"  
"The Buccaneer"  
"Hollywood Extra"  
"Once in a Lifetime"  
"The Tavern"  
Choir (1, 2, 3, 4)



VIRGINIA R. CUTLER "Ginger"  
Orchard Prairie

President, Home Room (4)  
Secretary, Home Room (2)  
French Club (2, 3, 4)  
Harding Debate (3, 4)  
Volleyball (2)  
Baseball (2)  
Basketball (2)  
Orchestra (2, 3, 4)  
Big Sister (3, 4)  
Drum and Bugle Corps (3, 4)  
Record Staff (3)  
Girls' League Orchestra  
Girls' League Chorus (4)

WAYNE DALKE  
President, Home Room (4)  
Vice-President, Entertainment  
Department  
Debate (1, 2, 3)  
Hall Patrol  
Boys' Federation



BOB DANIELSON "Horse"  
Libby

National Honor Society  
Fire Squad (3, 4)  
Fire Chief (4)  
President, Boys' Federation  
(4)  
Student Council  
Executive Board, Student  
Council (4)  
Home Room President (3)  
Committee Chairman of  
Queen Contest (4)  
Rogers Night Under the Stars  
(3)  
"R" Club (3, 4)  
Secretary, Athletic Dept.  
Football (2, 3, 4)  
Basketball (2, 3, 4)  
Track (2, 3)  
Sports Editor, Cub Staff (4)  
Sports Editor, Record Staff  
(4)

GORDON DENNIS  
Longfellow  
Vice-President, Rifle Club  
(4)  
"R" Club (3, 4)  
Rifle Team (3, 4)  
Captain, Rifle Team (4)



Sports Editor, Annual Staff  
(4)  
Executive Board of Senior  
Class  
All City Football  
Honorary Captain Football

BEATRICE DRURY  
St. Maries High  
National Honor Society  
President, French Club (4)  
Social Secretary, Home  
Economics Club (3)  
Secretary, Girls' League (4)  
President, Home Room (2)  
Girls' League Rep. (2)  
Sergeant-at-Arms, Home Room  
(2)  
Secretary, Girls' League  
Council (4)



ROLANDO DRONDT "Andante"  
Hamilton

National Honor Society  
Band (2, 3, 4)  
Student Council (1, 3)  
Freshman Class Representative  
Chairman, Playhour  
Committee  
Boys' Federation

RAYMOND ELLIS  
Boys' Federation



JEAN ELLIOTT "Dimples"  
Arlington

Math Club (4)  
Basketball (1, 2)  
Volleyball (1, 2)  
Baseball (1)  
Girls' League

ANNA MAE ERICKSEN "Squak"  
Libby  
Vice-President, Home Room  
Pirette Girls  
Drum and Bugle Corps



JUNE ENOS  
Hamilton  
Secretary and Treasurer,  
Home Room (4)  
Spanish Club (4)  
Sub-Chairman, Dancing  
Committee (3)  
Scrapbook Committee (1)  
Play Hour Committee (3)  
"Hollywood Extra"  
Study Hall Roll Checker

MODELLE ERICKSEN "Sal"  
Libby  
Vice President of Home Room  
Pirette Girl

LEROEY IRVING ERLWEIN "Lee"  
*Highline High*  
 Honor Roll First Two Years  
 In Chicago  
 Football (3)  
 Track (2, 3, 4)



JOYCE FAIRBURN "Dopey"  
*Regal*  
 Treasurer, Home Economics  
 Club (4)  
 Home Economics Club (3, 4)  
 Girls' League  
 Volleyball (1, 2, 3)  
 Baseball (1, 2, 3)  
 Pirette Lieutenant (4)  
 Spring Sports' Queen  
 Candidate (3)  
 Pirette Girls (3)  
 Song Leader (4)  
 Senior Pageant (4)

JEANNE M. FLETCHER "Dolly"  
*Hamilton*  
 Home Room Vice-President  
 (2)  
 Chairman of "Ways and Means  
 Committee" in Home Room  
 Art Club (4)  
 Quill and Scroll (4)  
 "Once in a Lifetime"  
 "Hollywood Extra"  
 Cub Staff (4)  
 Record Staff (4)  
 Hall Patrol (4)  
 Annual Staff (4)  
 Drum and Bugle (3, 4)  
 Play Hour Committee (3)  
 Girls' League Dancing (2, 3, 4)  
 Study Hall (4)  
 Senior Prom Committee



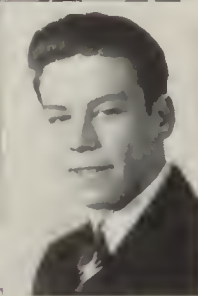
EUGENE FROST  
*Hamilton*  
 Hall Patrol  
 Golf

AL GAYDA "Legs"  
*Whitman*  
 Vice-President of Student  
 Council  
 Cosmic Club  
 Math Club  
 Art Club  
 Track (3, 4)



JOHN GOODMAN "Johnny"  
*Bemiss*  
 President, Home Room (3)  
 President, Speech Club (4)  
 "R" Club  
 Track (2, 3, 4)  
 Cub Staff

ETHEL ANNETTE HAINES  
*Hape High*  
 Girls' League  
 Basketball (2)  
 Nurse's Office (4)  
 Senior Pageant (4)  
 Girls' League Calendar (4)  
 Puppetry (4)



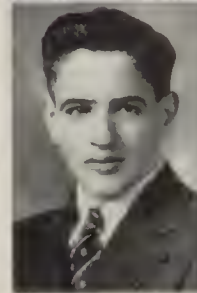
ARTHUR HANENBURG "Art"  
*Grand Rapids, Michigan*  
 Boys' Federation

MARTIN HANENBURG  
*Ottawa Hills High*  
 Boys' Federation



LLOYD HANKE  
*West Valley*  
 Boys' Federation

MERLE HART  
*Bemiss*  
 Boys' Federation



ALTON HASSELL JR. "Al"  
*Otis Orchards*  
 Cosmic Club (4)  
 Math Club (4)  
 "R" Club (3, 4)  
 Track (2, 3, 4)

JAMES HAYES "Jim"  
*Gonzaga*  
 Boys' Federation  
 Senior Prom Committee  
 Senior Honor Roll



JEANETTE HENDRICKSON "Jan"  
*Libby Junior*  
 Treasurer, O. G. A. Club  
 O. G. A. Club  
 Cub Staff (4)  
 Record Staff (4)  
 Annual Staff (4)  
 Big Sister (4)  
 Hall Patrol (4)  
 Tutor (3)  
 Skating (3, 4)  
 Puppetry (2, 3)  
 Senior Honor Roll  
 Scholastic Honor Roll

GLEN HENRICKS  
*Hope High*  
Boys' Federation

"Glen"



KENNETH A. HILL "Kenny"  
*Bemis*  
Boys' Federation

MAXINE HENRY  
*St. Patrick's*  
Quill and Scroll (4)  
O. G. A. (4)  
G. A. C. (4)  
Tumbling (1, 2)  
Volleyball (2)  
Manager of Volleyball (4)  
Basketball (2, 3, 4)  
Captain, Basketball (4)  
Baseball (1, 2, 3, 4)  
Cub Staff (3)  
Record Staff (4)  
Annual Staff (4)  
Pirette Girls (3, 4)

"Max"



RUTH HETHERINGTON  
*Hamilton*  
"Smokey"  
President of Home Room  
Student Council  
Representative  
H. R. Representative  
Sergeant-at-Arms, G. A. C.  
G. A. C.  
Basketball (4)  
Volleyball (3)  
Tennis (3)  
Baseball (3)  
Swimming  
Skating  
Tumbling

ARLENE HINSHAW  
*Columbia*  
Ballet  
Chairman in Gov. Class  
Chairman in Camera Class  
Chairman in N. W. History

"Butch"



JOHN HOMER  
*Regal*  
Boys' Federation

"Don"

DON HUGHES  
*Arlington*  
National Honor Society  
Sergeant-at-Arms, Cosmic Club  
(4)  
Vice-President, Home Room  
(3)  
Vice-President, Senior Class  
(4)  
Cosmic Club  
Math Club  
German Club  
"R" Club  
Yell Leader (1, 2, 3, 4)  
Baseball Manager (2)  
Student Council (3)  
Boys' Federation  
Representative (4)  
Fire Squad (4)



LELIA HOMES  
*Arlington*  
Girls' League

ROSINA M. JOHNSON  
*Hamilton*  
"Babe"  
Valedictorian  
National Honor Society  
Rogers Service  
Student Council (1, 3)  
Vice-President, O. G. A. (4)  
Secretary, O. G. A. (3)  
Chairman of Big Sisters (3, 4)  
Secretary, Senior A Class  
Junior Dramatics (2)  
Footlights (3, 4)  
O. G. A. (3, 4)  
Pirette (1)  
Girls' League Council (4)  
Glee Club (1, 2, 3)  
Mixed Chorus  
Candy Counter (3)  
Main Office (2)  
Mr. Meyer's Secretary  
"Pickles" (1)  
"Buccaneers" lead (3)  
"Harmony Hall" lead (3)  
"Hollywood Extra" lead (4)  
Scholastic Honor Roll  
Girls' League Honor Roll  
Tutor (2)

"Babe"



FRANCES L. HOXTELL "Penny"  
*Whitman*  
President of H. R. (4)  
Student Council (4)  
Tutoring  
Cub Staff Rogers Record (4)  
Study Hall Checker

ONA JOHNSON  
*West Valley*  
Girls' League

CLIFFORD JONES  
*Longfellow*  
Boys' Federation

"Clarence"



CLARENCE JONES  
*Columbia*  
Rogers Service Club  
Tennis (2, 3, 4)

M. VICTOR JONES  
*Hamilton*  
"Stubby"  
Hall Patrol  
Vice-President, 9B Class  
Sergeant-at-Arms, Art Club  
Art Club  
Boys' Federation



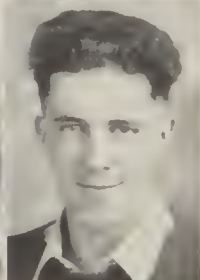


HELEN JORGENSEN "Jorgie"  
*Libby*  
 Vice-President, Home Room  
 Girls' League Representative  
 O. G. A.  
 Girls' League Chorus  
 Operetta (3)



CHARLES KORDUS  
*Loupfellow*  
 Boys' Federation

NORMA LANE "Pepper"  
*Libby*  
 Skating  
 Hiking  
 Girls' League



FRANK LANGILL  
*Whitman*  
 Boys' Federation

MAGNA LARSON  
*Libby*  
 Girls' League



VIVIAN LARSON "Viv"  
*Hamilton*  
 Rogers Service Club  
 National Honor Society  
 President, O. G. A. Club (4)  
 Secretary-Treasurer, "R"  
 Club (4)  
 Vice-President, Girls' League  
 (4)  
 Tennis (3, 4)  
 Big Sister (3)  
 Study Hall Checker (2)  
 Main Office (3, 4)  
 Room Representative (3)  
 Candy Counter and Cafeteria  
 (4)  
 Stenographer for Mr. Meyer  
 (4)  
 Hall Patrol Captain (4)

MARY LENZ "Lenzo"  
*Regal*  
 Secretary, Home Economics  
 Club  
 Treasurer, Harding Debate  
 Club  
 Home Economics (2, 3, 4)  
 Harding Debate (3, 4)  
 Chairman, Handicraft  
 Department (3)  
 Sub-Chairman, Knitting  
 Department (2, 4)  
 Tumbling (1)  
 Volleyball (1, 2, 3)  
 Basketball (1, 2, 3, 4)  
 Captain (2)  
 Baseball (1, 2, 3, 4)  
 Entertained in Girls' League  
 Con, Pep Con and Pay  
 Cons.  
 Tennis (3)



JUNE LOVE "Flash"  
*Coeur d'Alene*  
 Senior Prom Committee  
 Quill and Scroll  
 President, Home Room (4)  
 Senior Executive Board (4)  
 Record Staff (4)  
 Cub Editor (4)  
 Annual Staff (4)  
 Scholastic Honor Roll (4)  
 Girls' League

ERMA LIPPS "Jim"  
*Bemiss*  
 National Honor Society  
 Student Council  
 O. G. A. Club  
 Main Office  
 Girls' League Honor Roll  
 Cub Staff  
 Record Staff  
 Annual Staff  
 President, Girls' Athletic  
 Club (4)  
 G. A. C. Club (3, 4)  
 Harding Debate Reporter (4)  
 Harding Debate (4)  
 Volleyball (1, 2, 3, 4)  
 Basketball (1, 2, 3, 4)  
 Baseball (1, 2, 3)  
 Swimming  
 Skating  
 Tennis  
 Handy Andy  
 Nurse's Office  
 Rogers Service Club  
 Secretary, Home Room  
 Chairman, Public Utility  
 Department  
 Gym Office  
 Girls' League Council



DONALD McCLELLAND "Don"  
*Hamilton*  
 Rogers Service Club  
 Football (2, 3)  
 Baseball (2)  
 Boys' Federation

GLADYS McDOWELL  
*Columbia*  
 Girls' League



CLARA MCGEE "Fibber"  
*Arlington*  
 Spanish Club  
 Girls' League  
 Girls' Glee Club  
 "The Buccaneers"  
 "Harmony Hall"  
 Hollywood Extra  
 Senior Prom Committee

MAXINE J. MCHARNESSE "Mac"  
*Columbia*  
 Rogers Service  
 Hall Patrol  
 Baseball (1, 2, 3)  
 Basketball (1, 2, 3)  
 Tumbling (1, 2, 3)  
 Volleyball (1, 2, 3)  
 Main Office Worker



IVAN MCINNES "Ike"  
*Whitman*  
 Assistant Bandmaster  
 Boys' Federation

JOHN McKINNEY "Shadow"  
North Central  
Boys' Federation



MAXINE McKINNEY "Mac"  
Reardan High  
Annual Staff  
Record Staff  
Cub Staff  
Girls' League

DONALD E. McMILLEN "Mac"  
Ritzville High  
Boys' Federation



KENNETH McRAE "Scotty"  
Everett High  
Hall Patrol  
Paddle Squad  
President, Art Club (4)  
Sergeant-at-Arms, Art Club  
(3)  
Art Club (3, 4)  
Manager, "Hollywood Extra"  
Took Part in Two Operettas  
Business Manager, Two  
Queens (3, 4)

HELYN MACK "Mack"  
Arlington  
Rogers Service Club  
President, Home Room (3)  
Basketball (1, 2)  
Volleyball (1, 2)  
Baseball (1, 2)  
Hostess (4)  
Senior Social Committee (4)



RAY MANLEY "Skipper"  
North Central  
Baseball (4)  
Boys' Federation

SIDNEY A. MEAD "Sid"  
Cooper  
Fire Squad  
Rogers Service Club  
President, Montero Club (4)  
Vice-President, Sports Dept.  
Vice-President, Boys'  
Federation (4)  
Vice-President, "R" Club  
President, Home Room (3)  
Football (1, 2, 3)  
Basketball (1)  
Baseball (1, 2, 3, 4)



BETTY MERRITT "Betts"  
Libby  
Vice-President, Home Room  
(4)  
Glee Club  
"Hollywood Extra"  
Girls' League

JACK MERRITT  
Sencacquoten High  
Rogers Service (3)  
President, Rifle Club (3)  
Secretary, Rifle Club (4)  
President, Outdoor Life  
Department  
Rifle Club (2, 3, 4)  
Hi-Y Club (3, 4)  
"R" Club (2, 3, 4)  
Rifle Team (2, 3, 4)  
Basketball (3)



KATHRYN MILLER "Kay"  
Hamilton  
"Hollywood Extra"  
Study Hall Checker (4)  
Girls' League

FRANCIS MONAHAN  
Cooper  
Boys' Federation



DORIS MONTAGUE "Do"  
Whitman  
Vice-President, Home Room  
Spanish Club  
Study Hall Checker  
Hall Patrol  
Big Sister

DAN MORRIS "Hippo"  
Bemiss  
President, Sports Dept.  
President, Home Room  
Sergeant-at-Arms, Home Room  
"R" Club (2, 3, 4)  
Fire Squad (4)  
Football (1, 2, 3, 4)  
Track (1, 2)  
Student Instructor, Metal  
Shop



ELSIE MORS "Freckles"  
Longfellow  
President, "C" Club  
Badminton  
Volleyball  
Ice Skating  
Gym Office  
Main Office  
Hall Patrol  
Nurse's Office

DONALD GORDON MOSS "Don"  
*North Central*  
 Quill and Scroll  
 Record Staff  
 Annual Staff  
 Cub Edition  
 Boys' Federation



MAXINE M. MURPHY "Mac"  
*St. Patrick's*  
 Orchestra (1, 2)  
 Girls' League  
 Big Sister

LAURA MORSE "Laurie"  
*Bemiss*  
 Rogers Service Club  
 Treasurer, O. G. A. Club (3)  
 Secretary, Home Room (3)  
 Student Council (4)  
 "C" Club (2)  
 Tennis (1, 2, 3)  
 Volleyball (2)  
 Tumbling (1, 2)  
 Baseball (2)



OTHO NELSON  
*Whitman*  
 Vice-President, Home Room  
 (3)  
 Math Club (4)  
 Football (2, 3)  
 Track (1)  
 Baseball (1, 2, 3, 4)  
 Boys' Federation

EVELYN J. NISLEY "Eve"  
*Lewis and Clark*  
 Home Room President  
 Student Council Rep.  
 Secretary, Home Room  
 Girls' League Rep.  
 Senior Band (2, 3, 4)  
 Pirette Girl (2)



ARTHUR NOVOTNY "Art"  
*Whitman*  
 Secretary, Home Room (2)  
 Vice-President, Home Room  
 (3)  
 President, Home Room (4)  
 President, Handicraft  
 Department (4)  
 Vice-President, Cosmic Club  
 (4)  
 Rifle Club (3)  
 "R" Club (3, 4)  
 Math (4)  
 Baseball (1, 2, 3, 4)  
 Track (1)  
 Assistant Sports Editor,  
 Record Staff (4)  
 Hall Patrol

RALPH OBERG "Ted"  
*Libby Junior High*  
 Rogers Service Club  
 Rifle Club  
 Boys' Federation



LORRAINE ODEAN "Mel"  
*Libby Junior High*  
 Girls' League Representative  
 Pirette Girls  
 Girls' League

JOHN OLSEN  
*Longfellow*  
 President, Four Star Club (2)  
 President, Home Room (3)  
 President, Boys' Federation  
 Entertainment Department  
 Footlights Club  
 "C" Club (1)  
 "The Buccaneer"  
 "Once in a Lifetime"  
 "Tovarich"  
 "Harmony Hall"  
 "Hollywood Extra"  
 Student Council  
 Manager, Spring Sports Queen  
 Hall Patrol (4)



JOHNNY P. OSSO  
*Arlington*  
 "Rubber Legs"  
 President, "C" Club (3)  
 Junior Dramatic Club (2)  
 Harding Debate (3, 4)  
 "R" Club (2, 3, 4)  
 Secretary, Boys' Federation  
 Athletic Group  
 Football (1, 2, 3, 4)  
 Basketball (1, 2, 3, 4)  
 Baseball (1, 2)  
 Vice-President, Boys'  
 Federation

MONTANA OSTBY  
*Arlington*  
 Secretary, Vocational  
 Department  
 Basketball (2)  
 Volleyball (2)  
 Gym Office  
 Record Staff  
 Annual Staff



EUGENE OSTLUND "Gene"  
*Longfellow*  
 Boys' Federation

LEONA OTT "Mickey"  
*St. Maries High*  
 Girls' League



GEORGE PERRY "Mussolini"  
*Arlington*  
 Hall Patrol (2, 3, 4)  
 Fire Squad (3, 4)  
 President, German Club (2)  
 President, Home Room (2)  
 Student Council (3)  
 "C" Club  
 "R" Club  
 German Club  
 Math Club  
 Baseball (1, 2, 3, 4)  
 Football (1, 2, 3, 4)  
 Basketball (1, 2, 3, 4)



ELLEN PERSHALL "Lynn"  
*Whitman*  
 National Honor Society  
 Rogers Service  
 Vice-President, Home  
 Economics Club (4)  
 President, Home Room (4)  
 Secretary, Home Room (3)  
 G. A. C. Club  
 Volleyball (1, 2, 4)  
 Basketball (1, 2, 3)  
 Swimming (2)  
 Skating (3)  
 Tumbling (1)  
 Record Staff (4)  
 Annual Staff (4)  
 Nurses' Office (2)  
 Advisers' Office (2)

BOB PETERS "Pete"  
*Columbia*  
 Hall Patrol (1, 2)  
 Study Hall Worker (2)  
 Harding Debate  
 Vice-President, Home Room  
 "R" Club  
 Hockey  
 Football (1)  
 Baseball (1)

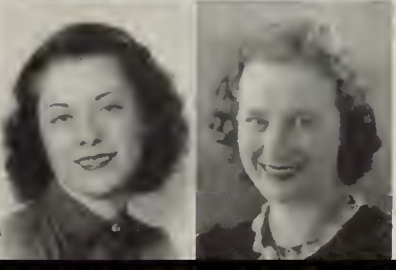
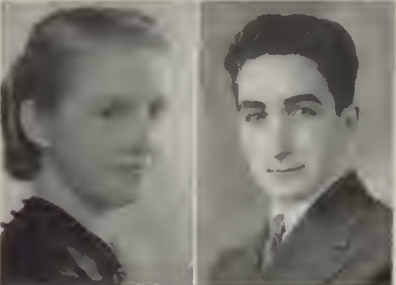
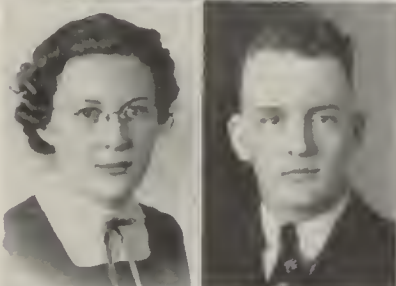
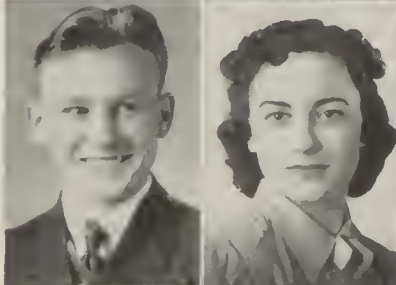
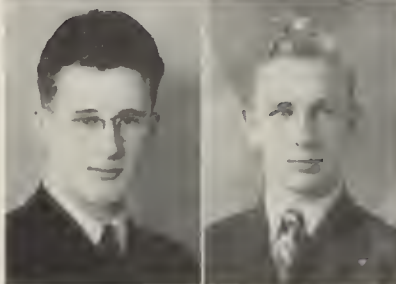
FRANK PETERSON "Pete"  
*Stockton, California*  
 Rogers Service  
 Rifle Club (3)  
 German Club (2, 3)  
 Math Club (4)  
 Football (3)  
 Track (1)  
 Tutor (1)  
 Hall Patrol (3, 4)  
 Rogers Patrol (3)  
 Cub Staff

HELEN RATLIFF "Helen"  
*Hamilton*  
 National Honor Society  
 Rogers Service Club  
 Vice-President, Junior  
 Dramatic Club (2)  
 President, Junior Dramatic  
 Club  
 Vice-President, Cosmic Club  
 Footlights Club  
 Chairman, Dramatic  
 Department  
 President, Home Room  
 Student Council  
 "The Showoff"  
 "Abie's Irish Rose"  
 "Once in a Lifetime"  
 "Tovarich"

GERALDINE RICE "Gerry"  
*Longfellow*  
 President, Home Room (2)  
 Girls' League Representative  
 Student Council (4)  
 Vice-President, 9B Class  
 Big Sister (3)  
 Harding Debate  
 "C" Club  
 Volleyball (2)  
 Spring Sports Queen Contest

JANET RIEK "Jan"  
*Bemis*  
 Service Club (3, 4)  
 President, Home Room (3)  
 Vice-President, Home Room  
 Chairman, Knitting Committee  
 Quill and Scroll (4)  
 Tennis (3)  
 Swimming (3)  
 Student Council (4)  
 Annual Staff (4)  
 Record Staff (4)  
 Library Worker (3, 4)  
 Gym Office (1)  
 Senior Prom Committee (3)

BETTY FLAINE ROBINSON  
*Longfellow*  
 Rogers Service  
 Main Office Worker  
 Big Sister (3)  
 Vice-President, Home Room  
 (4)  
 Room Representative (2, 3)  
 Treasurer, Harding Debate (4)  
 Harding Debate Club (3, 4)  
 Volleyball (1, 2)



JOHN WESLEY PETTY "Johnnie"  
*Longfellow*  
 National Honor Society (3, 4)  
 Boys' Federation Home Room  
 Representative  
 Sergeant-at-Arms, Spanish  
 Club  
 Spanish Club  
 Math Club  
 "R" Club  
 Radio Club  
 Football (Manager Squad)  
 Baseball (Manager Squad)  
 Track (Manager Squad) (3)  
 Basketball (Manager Squad)  
 Boys' Chorus (1)  
 Mixed Chorus (1)  
 Operetta, "Pickles"  
 All-School Play, "Tovarich"  
 Senior Prom Committee  
 Senior Honor Roll  
 Hall Patrol

EARL PETERSON "Pete"  
*North Central*  
 Boys' Federation

OLLIE PRIANO "Ogg"  
*Arlington*  
 Girls' League

ED REYNOLDS "Range"  
*Regal*  
 Sergeant-at-Arms, Speech Club  
 (4)  
 Sergeant-at-Arms, Home Room  
 (1)  
 President, Home Room (1, 2)  
 "R" Club (1, 2, 3, 4)  
 Football (1, 2, 3, 4)  
 Basketball (1, 2, 3, 4)  
 Tennis (2)  
 Track (1, 3, 4)  
 Baseball (1, 2)  
 Boys' Federation  
 Record Staff  
 Fire Squad (2, 4)  
 Cub Edition  
 Student Council  
 Senior Prom Committee

BETTY RICKETTS "Betty"  
*Regal*  
 Treasurer, Girls' League  
 Floor Hostess (4)  
 Secretary, Home Room (4)  
 Chairman, Hiking Department  
 (3)

FRANK ROTONDO "Frankie"  
*Cooper*  
 Secretary of Home Room  
 Band (3)

FLORENCE ROGERS "Suzy"  
*Libby*  
 Rogers Service  
 Scholastic Honor Roll (3, 4)  
 President, Footlights (4)  
 President, Home Room (2)  
 Footlights (3, 4)  
 Annual Staff (4)  
 Record Staff (4)  
 Cub Staff (4)  
 Floor Hostess (4)  
 "The Whole Town's Talking"  
 Costume Director, "The Show-  
 off"  
 Assistant Director, "The  
 Tavern"  
 Assistant Director, "Abie's  
 Irish Rose"  
 Assistant Director, "Once in a  
 Lifetime"  
 Assistant Director, "Tovarich"  
 Assistant Director, "Harmony  
 Hall"  
 Girls' League Chorus (2)

FLORENCE ROGERS "Suzy"  
*Libby*  
 Rogers Service  
 Scholastic Honor Roll (3, 4)  
 President, Footlights (4)  
 President, Home Room (2)  
 Footlights (3, 4)  
 Annual Staff (4)  
 Record Staff (4)  
 Cub Staff (4)  
 Floor Hostess (4)  
 "The Whole Town's Talking"  
 Costume Director, "The Show-  
 off"

Assistant Director, "The  
 Tavern"  
 Assistant Director, "Abie's  
 Irish Rose"  
 Assistant Director, "Once in a  
 Lifetime"  
 Assistant Director, "Tovarich"  
 Assistant Director, "Harmony  
 Hall"  
 Girls' League Chorus (2)

JOY RUDRUD  
*Arlington*  
Girls' League

"Joy"



MARY L. SCHEMMEL "Schem"  
*St. Patrick's*  
Room Representative  
Art Club  
"R" Club  
Volleyball (1, 2, 3)  
Tumbling (1, 2, 3)  
Basketball (1, 2, 3, 4)  
(Referee)  
Baseball (1, 2, 3, 4)  
Skating (3)  
Tennis (2, 3, 4)  
Pirate Girls (1, 2, 3, 4)  
Gym Office

WARREN SALTZ  
*Arlington*  
Sergeant-at-Arms, Junior  
Dramatic Club (2)  
Vice-President, H. Debate (4)  
President, Cosmic Club (4)  
Secretary, Sports Department,  
Boys' Federation (3)  
President, Home Room (2, 3)  
Sergeant-at-Arms, Home Room  
(3)  
Montero Club (3, 4)  
Cosmic Club (3, 4)  
"R" Club (2, 3, 4)  
German Club (3, 4)  
Hi-Y Club (4)  
Football (1, 2, 3, 4)  
Hockey (3)  
Tennis (1, 2, 3, 4)  
"Show Off" (2)  
Band (1, 2)  
Project Committee (3)  
Spring Sports Queen Manager  
1, 2, 3)

"Bus"



VERN SATLER  
*West Valley*  
Boys' Federation  
Cub Edition

"Vern"

DOROTHY SCHEDEL  
*Longfellow*  
Rogers Service Club  
G. L. Room Representative  
V. P. Home Room  
Main Office (3)  
Hall Patrol  
Library

"Dot"



MELVIN SHANSBY  
*Longfellow*  
Math Club  
Boys' Federation

"Mel"

CHARLES SHORT  
*Libby Junior*  
Boys' Federation

"Chuck"



ELEANOR SHOULTS  
*Libby Junior*  
Tumbling (1, 2)  
Volleyball (1, 2)  
Roll Checker (2)  
"Pickles"  
"Harmony Hall"

"El"

OPAL MAE SILLS  
*Columbia*  
Girls' League

"Op"



MARGIE SIMONSON.  
*Bemiss*  
Rogers Service Club  
Student Council  
Girls' League  
"C" Club  
Volleyball (1, 2)  
Tennis (1, 2)  
Gym Office  
Library Desk  
Scholastic Honor Roll

"Simie"

BARBARA SIMPSON  
*Regal*  
Treasurer, G. A. C.  
Room Representative  
G. A. C.  
Home Economics Club  
Volleyball (2, 3, 4)  
Tumbling (2, 3)  
Basketball (1, 2, 3, 4)  
Baseball (1, 2)  
Tennis (3, 4)  
Cub Edition  
Pirate Girls (2, 3, 4)  
Gym Office  
Prom Committee

"Bobbie"



ELEANOR J. SMITH "Pumpkin"  
*Hamilton*  
National Honor Society  
Salutatorian  
President, French Club (4)  
Secretary, Cosmic Club (3)  
Vice-President, Girls' League  
(4)  
President, Girls' League (4)  
Chairman, Big Sister  
Department, Girls' League  
(3)  
President, Home Room (2)  
President, Freshman Class (1)  
French Club (2, 3, 4)  
Cosmic Club (3, 4)  
Math Club (4)  
Pirette (3)  
Drum and Bugle Corps (4)

GLADYS SMITH  
*"Glad"*  
National Honor Society  
Service Club  
Secretary, Cosmic Club (4)  
President, Home Room (3)  
Home Room Representative  
Cosmic Club (3, 4)  
"Pickles" (1)  
"Buccaneers" (2)  
"Harmony Hall" (3)  
"Hollywood Extra" (4)  
Hall Patrol (3, 4)  
Handy Andy (3)  
Big Sister (3, 4)  
High School Choir  
(1, 2, 3, 4)  
Drum and Bugle Corps (4)  
Pirettes (3)

"Glad"



ISABEL SMITH  
*St. Patrick's*  
Spanish Club  
Basketball (1, 2, 3, 4)  
Tumbling (1, 2, 3, 4)  
Baseball (1, 2, 3)  
Pirettes (2, 3, 4)

"Bell"

OSCAR STIRLING "Ick"  
*St. Patrick's*  
 Sergeant-at-Arms, Rifle Club  
 (4)  
 Vice-President, Outdoor Life  
 (4)  
 Cosmic Club  
 Rifle Club  
 Rifle Team (4)

DON STEELE "Tiny"  
*Regal*  
 President, Federation  
 Entertainment Department  
 (3)  
 Secretary, Boys' Federation  
 (4)  
 Junior Dramatics (2)  
 Footlights (4)  
 Fire Squad (4)  
 Band (3, 4)  
 Orchestra (4)  
 President, Boys' Federation  
 Hall Patrol (4)  
 "Pickles"  
 "Buccancers"  
 "Harmony Hall"  
 "Once in a Life-Time"

LLOYD STUSSI "Stus"  
*Whitman*  
 Math Club  
 Football (1, 2, 3, 4)  
 Baseball (2, 3)

EDITH TERACENO  
*Arlington*  
 Vice-President, Home Room  
 Basketball (1, 2, 3, 4)  
 Captain, Basketball  
 Volleyball (1, 2, 3, 4)  
 Baseball (1, 2, 3, 4)

RUSSELL THOMPSON "Russ"  
*Regal*  
 Rogers Service Club  
 Vice-President, Home Room  
 (3)  
 Treasurer, Home Room (4)  
 Social Representative, Home  
 Room  
 Secretary, Entertainment  
 Department  
 Hi-Y Club (3, 4)  
 Senior Prom Committee  
 Senior Nominating Comm.  
 Rifle Club  
 Record Staff  
 Cub Staff  
 Annual Staff  
 Business Manager, Rogers  
 Record  
 Band (2, 3, 4)

RICHARD TRUSCOTT "Dick"  
*West Valley*  
 Home Room Representative  
 Paddle Squad (4)  
 Record Staff (4)  
 Boys' Federation

JAMES TURNER "Roscoe"  
*Bemis*  
 Rogers Service Club  
 President, Spanish Club (4)  
 Vice-President, Spanish Club  
 (4)  
 Treasurer, Spanish Club (3)  
 Home Room Secretary (2, 3)  
 Home Room Vice-President  
 Track Manager  
 Hall Patrol (1, 2)  
 Paddle Squad (2, 3)  
 Secretary, Outdoor Life Dept  
 of Boys' Federation

ROBERT L. SWARTZ "Jorgie"  
*Libby*  
 National Honor Society  
 Rogers Service  
 President, Home Room  
 President, "C" Club  
 Boys' Federation Rep.  
 "C" Club  
 Footlight Club  
 Editor of Cub Edition  
 Editor of Rogers Record (4)  
 Annual Staff  
 President, Senior Class  
 "Tovarich"  
 Movie Camera Committee  
 Queen Contest Committee  
 Chairman  
 Student Council  
 Dance Committee  
 Scholastic Honor Roll

JAMES A. SNYDER "Jim"  
*Commerce High*  
 Boxing (1, 2) at Commerce  
 Wrestling (1, 2) at Commerce  
 Gym Leader (2) at Commerce

DOROTHY TEE  
*Colville Junior High*  
 Spanish Club (3, 4)  
 Basketball (2, 3)  
 Baseball (2, 3)  
 Tumbling (2, 3)  
 Volleyball (2, 3)  
 Tennis (3)  
 Drum and Bugle Corps (3, 4)

EARL TERRY "Duke"  
*Regal*  
 Student Council (2)  
 Sergeant-at-Arms, Cosmic (4)  
 Sergeant-at-Arms, German  
 Club (3, 4)  
 Home Room President (2)  
 Cosmic (3, 4)  
 Montero (3, 4)  
 German Club  
 Four Star Club (3, 4)  
 "R" Club (2, 3, 4)  
 Spring Sports Queen  
 Manager (3)  
 Tutor (1)  
 Hall Patrol (3)

DOROTHY TORGERTSON "Dot"  
*Columbia*  
 Dancing  
 Girls' League

BARBARA J. WAGNER "Babs"  
*Hamilton*  
 Spanish Club  
 Student Council  
 Tennis (3)  
 Hall Patrol (Lieut.)  
 Gym Office  
 Advisor's Office

JAMES URE "Skce"  
*Whitman*  
 Quill and Scroll (4)  
 Secretary, Math. Club (4)  
 Boys' Federation Rep. (1)  
 Secretary, Home Room (3)  
 Associate Editor, Annual (4)  
 Lieut. Hall Patrol (4)  
 Mathematics Club (4)  
 Hi-Y Club (2, 3)  
 Stage Crew (2, 3)  
 Electrician (2, 3)  
 Cub Staff (4)  
 Record Staff (4)  
 Annual Staff (4)



FRANCES MAE WILLIAMSON  
"Franny"

*Longfellow*  
President, O. G. A. (4)  
Secretary, French Club (1, 3)  
Treasurer, Girls' League  
Girls' League Rep.  
Student Council Rep.  
O. G. A. Club  
French Club  
Basketball (3)  
Baseball (1, 3)  
Tennis (2, 3)  
Volleyball (1, 3)  
Pirette (1)  
Nurses Office (3)  
Study Hall (3)  
Hostess (4)



CHARLES W. WAKELEY  
"Chuck"

*Arlington*  
Fire Squad (3, 4)  
Sergeant-at-Arms, Boys' Fed.  
Vice-President, Athletic Dept.  
Fire Chief (4)  
"R" Club (2, 3, 4)  
Football (1, 2, 3, 4)  
Basketball (1, 2, 3, 4)  
Baseball (1, 2, 3, 4)  
11i-Y (4)  
Golf (2, 3, 4)  
All-City Football '38  
Bland Award '38



ALEXANDER WHALEY  
"Alec"

*Bemiss*  
Boys' Federation

EDITH WENDEL  
"Wendy"

*Bemiss*  
Vice-President, Harding  
Debate Club (3, 4)  
O. G. A. Club (4)  
Volleyball  
Baseball  
Basketball  
Tumbling



PATRICIA WILLIAMS  
"Pat"

*Bemiss*  
"C" Cub (2)  
Volleyball (1, 2, 3)  
Baseball (1, 2, 3)  
Basketball (1, 2)  
Basketball Referee (3)  
Tumbling (1, 2, 3)  
Skating (3)  
Dance Committee  
Pirette Girls (1, 2)  
Gym Office

DOROTHY WHITTAKER  
"Dot"

*Longfellow*  
Junior Dramatics  
Operetta "Harmony Hall"  
Basketball (1, 2)  
Tumbling (1, 2)



MARY L. WYNKOOP  
"Squeek"

*Libby*  
Secretary, Art Club (4)  
O. G. A. Club  
Glee Club  
Home Room Rep. (2, 4)

MARY J. WOLFERMAN  
"Janie"

*Bemiss*  
Girls' League Rep. (1)  
Junior Dramatics Club (1, 2)  
Four Star Club (3)  
Baseball (2, 3)  
Volleyball (3, 4)  
Basketball (3)  
Record Staff (4)  
Annual Staff (4)  
"Pickles" (2)  
Quill and Scroll



JOE TAYLOR  
"Arlington"

Boys' Federation



## *June Class History*

---

● Entering in September 1935 as a class of 197, the graduating Seniors of June 1939 were then the largest class ever to start their high school days at Rogers. They maintain a size distinction to the end. On Friday evening, June 7, diplomas will be handed to 193 seniors—the largest class ever to be graduated.

Scholarship honors go to Rosina Johnson, Valedictorian, and Eleanor Smith, Salutatorian. Bob Swartz leads the class through its last days at Rogers, while Don Hughes holds the position of vice-president. Rosina Johnson keeps the minutes as secretary, and Don Carter is treasurer.

Two members of the class have occupied the Editor's desk on the Record staff; Bob Swartz, and Paul Betten. Ralph Berg headed the Student Council during the last semester.

## *June Commencement*

---

● Past present and future democracy will be portrayed at the June graduation in "Challenge of Democracy." The script was written by the special English 8 class under the direction of Paul MacGown of the English department.

Those participating in the commencement program and production were Wayne Dalke, Johnny Olsen, Lois Cox, Yvonne Burke, Dick Johnson, Jean Starry, John Petty, Annette Haines, June Enos, Anna Mae Erickson, Ethylle Anderson, Ray Manley, Eleanor Smith, Doris Montagne, Lucille Graedel, Al Akins, Jeanne Fletcher, Bob Swartz, Russell Thompson, Gordon Nelson, Ralph Oberg, James Hayes, George Casey, Bob Berger, Joyce Fairburn, and Don Steele.

## *Senior Autographs*

---



1. Eller.  
2. Hendrickson and Lane.  
3. Hughes.  
4. Lammers.

5. —, Peterson, Harris.  
6. ?  
7. Simpson.

8. Starr.  
9. Belyea.  
10. Brewer.

11. Henry.  
12. Stussi.  
13. Lunch time.  
14. O'Brien and ?



*Senior B Class*





*Junior A Class*





*Junior B Class*



*Sophomore A Class*



*Sophomore B Class*





*Freshman A Class*





*Freshman B Class*

## "Rogers' Pep Corps"

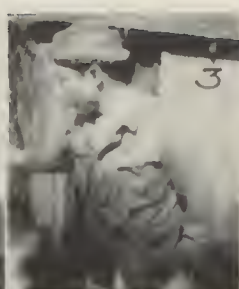




. . . Features







1. 4 Musketeers.  
2. Long Ears.  
3. Hunting.  
4. Peek a boo.

5. Ludwig and Glass.  
6. Pershall.  
7. "R" Gang.

8. Just resting.  
9. Saltz.  
10. Clarke.

11. Cramming.  
12. Busy?  
13. Sterling, Turner and Saltz.



First Row: E. Smith, G. Smith, Ponto, Hinz, White, Bossio, Diediker, Hughes, and Petty. Second Row: Drake, Larson, Bysegger, Ratliff, Johnson, Carter, Mr. Jinnett (adviser). Third Row: Mr. Meyer (adviser), Drury, Curryer, Johnson, Oster, Thompson, and Lipps. Fourth Row: Oxrieder, Ertel, Hicks, Pershall, Swartz, Berg, Kludt, and Gumm.

## National Honor Society

### FIRST SEMESTER

Miles Ertel

President

#### MEMBERS

Kathryn Luse  
Beulah McGhee  
Mamie Hinz  
Gladys White  
Ted Oster  
Art True  
Miles Ertel  
Dawnelda Hicks  
Rosina Johnson  
Eleanor Smith  
John Petty  
Don Hughes

Albert Akins  
Don Carter  
Charles Gumm  
Edna Mac Anderson  
George Stein  
James Kludt  
Bob Danielson  
Erma Lipps  
Bob Swartz  
Ralph Berg  
Shirley Thompson  
Flora Curryer  
Beatrice Drury

Vivian Larson  
Helen Ratliff  
Lloyd Stansbury  
Esther Bossio  
Winnie Mae Drake  
Gladys Smith  
Don Diediker  
Jeanette Johnson  
Isla Bysegger  
Roland Dhondt  
Marian Ponto  
Ellen Pershall

● Requirements for admittance to the National Honor Society are outstanding character, leadership, scholarship and service. The highest honor a high school student may attain is membership in this national organization. Principal J. D. Meyer and Vice-Principal E. R. Jinnett are advisers.



**First Row:** Wilson, Clarke, Bullard, Goble, Johnson, Kendrick, Ellis, Curryer, Cutler, G. Smith, E. Smith, Diedeker, E. R. Jinnett (adviser). **Second Row:** Waller, Pershall, Drury, Ratliff, Bysegger, Thompson, Lipps, Schendel, Sullivan, Betten, Oxreider, Dhondt, Hansen. **Third Row:** Carter, Johnson, True, Anderson, Pickens, Akins, Hassel, Kludt, Gayda, Swartz, Oberg. **Fourth Row:** Gumm, Hicks, Mobley, Danielson, Stansbury, Berg.

## National Honor Society

### SECOND SEMESTER

Bob Swartz

*President*

#### OLD MEMBERS

Art True  
John Petty  
Don Carter  
Don Diediker  
Erma Lipps  
Flora Curryer  
Gladys Smith  
Roland Dhondt  
Lloyd Stansbury

Rosina Johnson  
Don Hughes  
Charles Gumm  
James Kludt  
Bob Swartz  
Beatrice Drury  
Jeanette Johnson  
Ellen Pershall  
George Oxreider

Eleanor Smith  
Albert Akins  
Helen Ratliff  
Bob Danielson  
Ralph Berg  
Vivian Larson  
Isla Bysegger  
Dawnelda Hicks

#### NEW MEMBERS

Virginia Cutler  
Ralph Oberg  
Doris Montague  
Grant Anderson  
Marjorie Kendrick  
Janette Ellis

Walter Mobley  
Albert Gayda  
Alton Hassel  
Mary Eleanor Sullivan  
Effie Goble  
Elaine Waller  
Maxine Clarke

Paul Betten  
Marguerite Bullard  
Dorothy Schendel  
Beverly Wilson  
Rex Hansen  
Vincent Pickens

● New members were bestowed with this highest honor on April 27 when they were elected to the National Honor Society.





First Row: Ponto, Thomas, Stocking, Cassidy, Drake, Jackson, Drake, DeBolt, Birge, and Smith. Second Row: Carter, Morse, Rogers, Casperson, McDowell, Ludwig, Bullard, La Telle, Collins, Johnson, Arnold, and Belyea. Third Row: Ertel, Cozzetto, Simonson, Olsen, Julian, South, Hutchins, G. Stein, Sweet, and Hunt. Fourth Row: McBreen, North Waldron, Welr, Berg, Cooper, Emch, Sjostrom, Pieton, and Jelinek.

## Student Council

### FIRST SEMESTER

Esther Bossio  
Miles Ertel  
Don Carter  
Kathryn Thompson

*President*  
*Vice-President*  
*Secretary*  
*Treasurer*

### MEMBERS

Bob Swartz  
Edith Birge  
George Stein  
Marguerite Bullard  
Don Carter  
Margaret Casperson  
Veva Hicks  
Esther Bossio  
Miles Ertel  
Barbara Wagner  
Ralph Berg  
Mildred Rogers  
Winnie Drake  
Bob Clark  
Laura Morse

John Olsen  
Don Williams  
Dave Belyea  
Josephine Julian  
Norma Stocking  
Kathryn Thompson  
Earl Waldron  
Louis Pieton  
Violet Johnson  
Lucille Cozzetto  
Esther Caferro  
Louis Sjostrom  
Roy Emch  
Joe McBreen  
Betty Simonson

Jane Castle  
John Jelinek  
Warren North  
Gerry Ludwig  
Dorothy McDowell  
John Peterson  
Bill Sweet  
Lorna Soper  
Charles Whittaker  
Ruth LaTelle  
Elvera Via  
Del Balch  
Eunice Johnson  
Jim Arnold

● The Associated Students of Rogers are officially governed by the Student Council. It is made up of home room representatives, officers of the Boys' Federation, Girls' League and the editor of the Record. Principal J. D. Meyer, Miss Rose Finnegan, and J. M. Tewinkel were the first semester advisers.





First Row: Braaten, Balch, Kroske, True, Danielson, and Sandberg. Second Row: Jullano, Smith, Williamson, Walters, Thorson, Ogle, Harris, Appa, Crain, Myhre, Schulz, Short, McBride. Third Row: Anderson, Briley, Speck, Dickey, Bays, Kendrick, Rick, Patterson, Thompson, and Zeigler. Fourth Row: Gayda Hunt, Francis Ratliff, Curryer, Williams, Fre, Prahl, and Benevay. Fifth Row: Roberts, Hutchins, Olson, Cooper, Dahl, Reneau, Betten, Berg, and Gumm.

## Student Council

### SECOND SEMESTER

Ralph Berg  
Al Gayda  
Gullan Dahl  
Kathryn Thompson

*President*  
*Vice-President*  
*Secretary*  
*Treasurer*

#### MEMBERS

Flora Curryer  
Marjorie Kendrick  
Lark Myhre  
Laura Harris  
Hattie Crain  
Emma Jean Short  
Janet Rick  
Mildred Patterson  
Jean Thorson  
Geraldine Ziegler  
Peggy Williams  
Agnes Appa  
Frances Williamson  
Gullan Dahl

Letha Earls  
Marjorie Ogle  
Betty Walters  
Violet Benevay  
Kathryn Prall  
Ruth Campbell  
Al Gayda  
Charles Gumm  
Don Olson  
Robert True  
Joe Speck  
Ed Reneau  
Mildred Ure  
Helen Ratliff

Bob Danielson  
Bob Kroske  
Alfred Bays  
Jack Sandberg  
Kenneth Hunt  
Bill Braaten  
Anita Vanderhoff  
Ralph Berg  
Paul Betten  
Tony Jullano  
Dave Cooper  
Bob Briley  
Frank Hutchins

● Main projects of the Student Council for this semester have been matinee dances, athletic convocations, and the Sports Queen contest. Principal J. D. Meyer, Mr. Hubbell and Miss Rose Finnegan are advisers.



First Row: Williamson, Valsvig, Ricketts, Drake, Smith. Second Row: Johnson, Wynkoop, Johnson, Ratliff, Ludwig, and Zumhoff. Third Row: Winnington, Drury, Larson, McGhee.

## Girls' League

### FIRST SEMESTER

Winnie Mae Drake	President
Eleanor Smith	Vice-President
Marie Zumhoff	Secretary
Betty Jane Ricketts	Treasurer

### DEPARTMENT CHAIRMEN

Margaret Blodgett	Handicraft
Barbara Winnington	Camp Craft
Rosina Johnson	Big Sister
Hilda Johnson	Social Life
Beulah McGhee	Puppetry
Helen Ratliff	Dramatics
Betty Wynkoop	Singing
Peggy Jean Elijah	Dancing
Gladys Valsvig	Public Utility
Gerry Ludwig	Social Service

● In order to insure friendliness among the girls of the school, the Girls' League was established. Each girl may choose the department to which she wishes to belong. The departments are advised by teachers.



First Row: Ventl, Kludt and Osso. Second Row: McBreen, Danielson, and Wakeley.

## Boys' Federation

### FIRST SEMESTER

Joe McBreen	President
John Osso	Vice-President
Jimmy Kludt	Secretary
Charles Wakeley	Sergeant-at-arms

### DEPARTMENT CHAIRMEN

Wayne Dalke	Entertainment
LaVerne Marier	Sports
George Oxrieder	Outdoor Life
Earl Terry	Science and Adventure
Art Novotny	Handicraft

● The Boys' Federation, under the guidance of Mr. Tewinkel, had as its aim during the first semester, the promotion of friendliness and guidance in school activities for all the boys of the school.





First Row: Williamson, Appa, Murphy, Anderson, Blodgett, and Smith. Second Row: Mead, V. Larson, Johnson, Lipps, M. Larson, and Drury.

## Girls' League

### SECOND SEMESTER

Eleanor Smith	President
Vivian Larson	Vice-President
Beatrice Drury	Secretary
Frances Williamson	Treasurer

### DEPARTMENT CHAIRMEN

Margaret Blodgett	Handicraft
Sandra Appa	Camp Craft
Rosina Johnson	Big Sister
Marian Bonser	Social Life
Zelda Lee Anderson	Puppetry
Marjorie Mead	Dramatics
Betty Wynkoop	Singing
Madeline Murphy	Dancing
Erna Lipps	Public Utility
Hildor Thornes	Social Service
Magna Larson	Vocational

● The Girls' League affords an opportunity for the girls to show any outstanding ability, which they may have, through the several departments. Miss Rose Finnegan is adviser.



First Row: Williams, Mead, Peters, Simpson. Second Row: Mr. Hubbell (adviser), Steele, Danielson, and Smith

# Boys' Federation

## SECOND SEMESTER

Bob Danielson	.....	.....	President
Sidney Mead	.....	.....	Vice-President
Don Steele	.....	.....	Secretary
Don Williams	.....	.....	Sergeant-at-arms

## DEPARTMENT CHAIRMEN

Bob Peters	.....	.....	Entertainment
Dan Morris	.....	.....	Sports
Jack Merritt	.....	.....	Outdoor Life
Neal Templin	.....	.....	Science and Adventure
Art Novotny	.....	.....	Handicraft

● The five departments of the Boys' Federation insures training in various works and companionship of the members to all the boys. Mr. Hubbell is the adviser, being newly appointed at the beginning of the second semester.



**First Row:** Blodgett, Moore, Denman, Bernstein, Simonson, Sicilia, Rodolph, Riek, Smith, and Wilson. **Second Row:** Shaw, Wynkoop, Anderson, Schendel, S. Thompson, Larson, Johnson, Pershall, and Reeder. **Third Row:** Crumbley, Denman, Curryer, Carlson, Robinson, Betten, Lammers, Rogers, Kendrick, Coburn (adviser). **Fourth Row:** Lipps, Casey, R. Thompson, Carter, Jones, Turner, Swartz, and Oberg.

## Rogers Service Club

### MEMBERS

Grace Anderson  
 Elaine Bernstein  
 Doris Carlson  
 Doris Crumbley  
 Flora Curryer  
 Bessie Denman  
 Mary Denman  
 Pearl Eames  
 Peggy Jean Elijah  
 Vivian Ellis  
 Adaline Hann  
 Mamie Hinz  
 Hope Johnston  
 Phyllis Lammers  
 Vivian Larson  
 Kathryn Luse  
 Helen Mack  
 Rosina Johnson  
 Margaret Blodgett  
 Jean Thorson  
 Gladys Valsvig  
 Erma Lipps  
 Marjorie Kendrick  
 Betty Robinson  
 Ethyle Anderson

Laura Morse  
 Sylvia Moore  
 Beulah McGhee  
 Patricia O'Grady  
 Evalyn Olson  
 Margaret Reeder  
 Florence Rogers  
 Janet Riek  
 Vera Rudolph  
 Gladys Smith  
 Carol Shaw  
 Josephine Sicilia  
 Shirley Thompson  
 Norma Thompson  
 Beverly Wilson  
 Gladys White  
 Winnie Mae Drake  
 Bernice Marier  
 Lola Tobler  
 Dorothy Schendel  
 Maxine McHarness  
 Beverly Wilson  
 Helen Ratliff  
 Ronnie Beedle

Betty Wyncoop  
 Margaret Yarroll  
 Ellen Pershall  
 Bob Berger  
 Warner Burrill  
 Don Carter  
 Roger Case  
 Louis Drinkman  
 Clarence Jones  
 Elmer Kromm  
 Don McClelland  
 Jack Merritt  
 Ted Oster  
 Frank Peterson  
 Eugene Robbins  
 Bob Swartz  
 James Turner  
 Harold Schindler  
 Lee Overland  
 Felix Entenmann  
 Bob True  
 Paul Betten  
 Margie Simonson  
 Betty Gaines  
 Helen Jorgensen

● The Rogers Service club is an honorary society for students who have done outstanding work for the school. They are recommended for membership by the faculty.

E. R. Jinnett and A. P. Coburn are club advisers.





**First Row:** Drake, Evans, West, Crane, Ponto, and Zumhoff. **Second Row:** Jones, Miller, Wynkoop, Denman, McRae, and Mr. Hughes (adviser). **Third Row:** Barstead, Curryer, Berg, Gayda, Johnson, True, Gottwig, and Linden.

## Art Club

### First Semester

Winnie Mae Drake	President
Jack Linden	Vice-President
Beulah McGhee	Secretary
Marian Ponto	Treasurer
Kenny McRae	Sergeant-at-Arms

### Second Semester

Kenny McRae
Bob True
Mary Lois Wynkoop
Harold Curryer
Victor Jones

### MEMBERS

Marvin Ayler  
Jimmy Barstead  
Ralph Berg  
Bob Blake  
Norman Bumpus  
Herb Coffee  
Lois Crane  
Harold Curryer  
Mary Denman  
Winnie Mae Drake  
Fern Edmonson

Evelyn Evans  
Jeanne Fletcher  
Al Gayda  
Don Gottwig  
Irene Kiefer  
John Homer  
Dick Johnson  
Hope Johnson  
Victor Jones  
Dean Ladd  
Ruth LaTelle

Doris Lundquist  
Jack Linden  
Beulah McGhee  
Kenny McRae  
Isabelle Miller  
Marian Ponto  
Mary Schemmel  
Bob True  
Katherine West  
Mary Lois Wynkoop  
Marie Zumhoff

● The purpose of the Art Club is to promote action and interest in the Fine Arts. Mr. Hughes is the club adviser.



First Row: Stein, E. Smith, G. Smith, Hunt, Raaberg, Terry, Hansen, and Novotny. Second Row: Crocker, Waller, Ratliff, Hughes, Finley, Finn, Diediker, and Nelson. Third Row: Drury, Miller, Thompson, True, Manning. Fourth Row: Hassell, Weir, Gayda, Berg, Brewer, Anderson, and Templin.

## Cosmic Club

### First Semester

Miles Ertel  
Helen Ratliff  
Gladys Smith  
Earl Terry

President  
Vice-President  
Secretary  
Sergeant-at-Arms  
Publicity Agent

### Second Semester

Warren Saltz  
Art Novotny  
Nellie Hunt  
Don Hughes  
Eugene Manning

### MEMBERS

Al Akins  
Grant Anderson  
Ralph Berg  
James Brewer  
Ruth Crocker  
Jerry Davis  
Don Diediker  
Miles Ertel  
Allen Finley  
Johnny Finn  
Al Gayda

Rex Hansen  
Alton Hassell  
Don Hughes  
Nellie Hunt  
Eugene Manning  
Isabel Miller  
Daryl Nelson  
Helen Ratliff  
Lucille Raaberg  
Eleanor Smith  
Gladys Smith  
Lloyd Stansbury

George Stein  
Neal Templin  
Art Novotny  
Johnny Stein  
Kenney Tang  
Earl Terry  
Oscar Stirling  
Shirley Thompson  
Bob True  
Elaine Waller  
Brock Weir

● Three-year science students are eligible for the Cosmic club, whose yearly program consists of scientific demonstrations, experiments, lectures, industrial trips and social activities. I. R. Minzel is the club adviser.



First Row: Bell, Armstrong, Miller, Hansen, Murphy, Clarke, Pederson, and Elijah.  
 Second Row: Carter, Mobley, Berger, Melcho, Bysegger, Trone, Ratliff, Johnson, and Rogers.  
 Third Row: Casey, Swartz, Kludt, Anders, Holcomb, Wagner, and Hicks. Fourth Row: Smith,  
 Pickens, Olsen, and Steele.

## Footlights Club

### First Semester

Florence Rogers

Thula Trone

President

Vice-President

Secretary-Treasurer

### Second Semester

Bob Berger

Vincent Pickens

Anita Armstrong

### MEMBERS

Claude Anders  
 Anita Armstrong  
 Bob Berger  
 Isla Bysegger  
 Don Carter  
 Maudie Jean Casey  
 Harold Curryer  
 Peggy Jean Elijah  
 Verna Hansen

Dawnelda Hicks  
 Jimmy Kludt  
 Beatrice DeChenne  
 Harlan Holcomb  
 Rosina Johnson  
 Walter Mobley  
 Madeline Murphy  
 Johnny Olsen  
 Dorothy Pederson

Helen Ratliff  
 Florence Rogers  
 Jobu Smith  
 Phyllis Stoffer  
 Bob Swartz  
 Edith Meicho  
 Thula Trone  
 Stanley Wagner  
 Leroy Whipple

● Juniors and Seniors are eligible for membership in the Footlights club and are selected by tryouts. The chief purpose of this club is to promote dramatics and entertainment in the school. Outings and parties are its main social activities. J. L. Purdy is the adviser.





First Row: Hodge, Gale, LeFevre • (adviser), Smith, Williamson, Clarke, Anderson  
 Second Row: South, Smith, Johnson, Thompson, Vermillion, Johnson, LaTelle. Third Row: Mead, Harris, Linebarger, Drury, Schiewe, Fuller.

## French Club

### First Semester

Eleanor Smith

Ed Harris

Frances Williamson

Esther Bossio

Miles Ertel

President

Vice-President

Secretary

Treasurer

Sergeant-at-Arms

### Second Semester

Beatrice Drury

Marjorie Mead

Ed Harris

Ed Harris

Kay Vermillion

### MEMBERS

Esther Bossio

Marguerite Dickey

Roana Clark

Ruth Crocker

Virginia Cutler

Miles Ertel

Ed Harris

Lois Hodge

Betty Jean Johnson

Hope Johnson

Ruth LaTelle

Marjorie Mead

Martin Palmquist

Eleanor Smith

Dorothy South

Shirley Thompson

Alan Updike

Maxine Clark

Katherine Vermillion

Frances Williamson

Helen Gale

Phyllis Smith

Dale Linebarger

Jeanette Johnson

Marvel Jean Shirley

Don Dry

Viola Anderson

Clair Kiefer

Dorothy Fuller

Alma Schiewe

Gilio Chesurin

● That more students would take an interest in French, this organization was formed. Students taking French are eligible. A scrapbook, made annually by the members, is sent to France. Also the club has an outing each year, as well as many parties. Miss Marion LeFevre is the club adviser.



First Row: Curryer, Ludwig, Glass, Phillips, Kraut, Raaberg, Terry, Erickson. Second Row: Mrs. Boyce (adviser), Hurrah, Bowers, Young, Hughes, McLeod, Taylor, Luding. Third Row: Hanifen, Everett, Diediker, Borlin, Meyers, Clough, Harris, Heiseler.

## German Club

Frank Erickson	President
Neil McLeod	Vice President
Flora Curryer	Secretary and Treasurer
Harold Borlin	Sergeant-at-Arms

### MEMBERS

Albert Akins  
Harold Borlin  
Flora Curryer  
Don Hughes  
Earl Terry  
Don Diediker  
Roland Heisler  
Faye Hughes  
Lillie Hughes  
Helen Young

Dudley Yenny  
Neil McLeod  
Bill Harris  
Frank Erikson  
Lucille Raaburg  
Katy Kraut  
Ima Lee Hara  
Jerry Everett  
Jean Hanifen  
Jerry Ludwig  
Ella McGee

Virginia Phillips  
Ive Taylor  
Dorothy Walker  
Beryl Bowers  
John Hendricksen  
Frank Meyers  
Joe Speck  
Alan Taylor  
Doris Carney  
Mary Glass

● The German club is organized to promote interest in German. Parties and outings are held throughout the year. Mrs. Marie Boyce is club adviser.



First Row: Appa, Gaines, Goble, Hanifen, Helean, Via, Clarke. Second Row: Wilson, Hodge, Carlson, Thompson, Kendrick, Johnson, Christianson. Third Row: Hunt, Henry, Miller Lipps, Simpson, Pershall, Carney, Bullard, Mabel Perkins (adviser).

## G. A. C.

### First Semester

Erma Lipps  
Maxine Clarke  
Marguerite Bullard  
Shirley Thompson  
Ruth Hetherington

President  
Vice-President  
Secretary  
Treasurer  
Sergeant-at-Arms

### Second Semester

Shirley Thompson  
Jeanette Johnson  
Doris Carlson  
Barbara Simpson  
Marjorie Kendrick

### MEMBERS

Sandra Appa  
Marguerite Bullard  
Doris Carney  
Doris Carlson  
Ruth Christianson  
Maxine Clarke  
Winnie Drake  
Betty Gaines  
Elsie Gill

Effie Goble  
Eileen Hanifen  
Maxine Henry  
Betty Helean  
Ruth Hetherington  
Lois Hodge  
Nellie Hunt  
Jeanette Johnson

Marjorie Kendrick  
Jackie Lowther  
Erma Lipps  
Isabel Miller  
Ellen Pershall  
Barbara Simpson  
Shirley Thompson  
Elvera Via  
Beverly Wilson

● The Girls' Athletic club is an organization for girls active in sports. Yearly projects for the G. A. C. are the making of pom-poms in football season and selling purple and white caps. Parties and outings make up the social activities. Miss Mabel Perkins is the adviser.





First Row: Osso, Peters, Broadhead, Saltz, Eller, and Payne. Second Row: Petretti, Drake, Wendell, Waller, Smille, Keller, Robinson. Third Row: Mrs. Morrison (adviser), Bauer, McBreen, Lipps, Lenz, Kyarsgaard, and Wagner.

## Harding Debate Club

### First Semester

La Verne Kyarsgaard	President
Edith Wendell	Vice-President
Violet Bauer	Secretary
Mary Bauer	Treasurer
Marian Ponto	Scribe

### Second Semester

Edith Wendell
Warren Saltz
Jack Eller
Betty Robinson
Erma Lipps

### MEMBERS

La Verne Kyarsgaard  
Edith Wendell  
Violet Bauer  
Mary Lenz  
Marian Ponto  
Lucille Petretee  
Erma Lipps  
Flora Curryer  
Virginia Cutler  
Winnie Drake  
Jack Eller  
Joe McBreen  
Elaine Michel

Vera Mae Michel  
Ted Oster  
Johnny Osso  
Warren Saltz  
Elaine Waller  
George Young  
Betty Robinson  
Kent Simonson  
Eileen Keller  
Billie Smilie  
Brock Weir  
Al Akins  
Doris Crumbley

Dorothy Armstrong  
LeeOra Manning  
Roger Meltvedt  
Vivian Cook  
Maxine Harris  
Don Broadhead  
Ray Ellis  
Bob Peters  
Harry Wagner  
Ray Smith  
Harold Gendreaux  
Alan Updike  
Adelle Sutton  
Winston Taylor

●The Harding Debate club is one of the more active groups of the school. The purpose of this club is to create a greater interest in music and dramatics. Two pay convocations yearly and an annual formal banquet in honor of the school debaters are the main activities. Membership is limited to Junior and Senior talent. Mrs. Iva Morrison is the adviser.



First Row: Collins, Wynkoop, Sims, Kraut, Barker, Keeler, Bernstein. Second Row: Fairburn, Blodgett, Moore, Thomas, Pershall, Jawort, Woodward, Shaw, Bullard. Third Row: Lenz, Thornes, Crumbley, Hutchinson, Simpson, Coffee, Strasser, Cozzetto.

## Home Economics Club

### First Semester

Marguerite Bullard  
Catherine Strasser  
Mary Lenz  
Joyce Fairburn  
Beatrice Drury

President  
Vice-President  
Secretary  
Treasurer  
Social Secretary

### Second Semester

Catherine Strasser  
Ellen Pershall  
Hildor Thornes  
Jean Coffee  
Madelyn Keeler

### MEMBERS

Marguerite Bullard  
Catherine Strasser  
Mary Lenz  
Joyce Fairburn  
Betty Wynkoop  
Hildor Thornes  
Carol Shaw  
Beatrice Drury

Bernadine Thomas  
Lucille Cuzzetto  
Jean Coffee  
Bettie Sims  
Ellen Pershall  
Alice Jawort  
Madelyn Keeler  
Barbara Simpson  
Doris Crumbley

Hazel Barker  
Dorothy Collins  
Kathryn Kraut  
Elaine Bernstein  
Bernice Hurnelt  
Evelyn Hutchinson  
Margaret Blodgett  
Sylvia Moore  
Betty Woodward

● Girls who have taken three semesters of Home Economics are eligible for the club. Miss Edna Herrington is the club adviser.



First Row: Betten, Doyle, B. Ratliff, Smith, Polk, McRae, Williams, J. Ratliff, Appa, Birge, Anderson, and Turner. Second Row: Towne, Baker, Sale, Parks, Luse, Zeigler, Elmquist, Steele, Rishton, Backman, McGhee, and Jackson. Third Row: R. G. Hubbard (adviser), Erickson, Sarsfield, Roberts, Hughes, Bergman, Crain, Hewitt, Allen, Bridewell, Peterson, and Rhodes.

## Junior Dramatic Club

### First Semester

Frank Erickson .....	President .....
Bob Luders .....	Vice-President .....
Hattie Crain .....	Secretary .....
Milyne Allen .....	Sergeant-at-Arms .....

### Second Semester

Hattie Crain
Edythe Birge
Agnes Appa
Milyne Allen

### MEMBERS

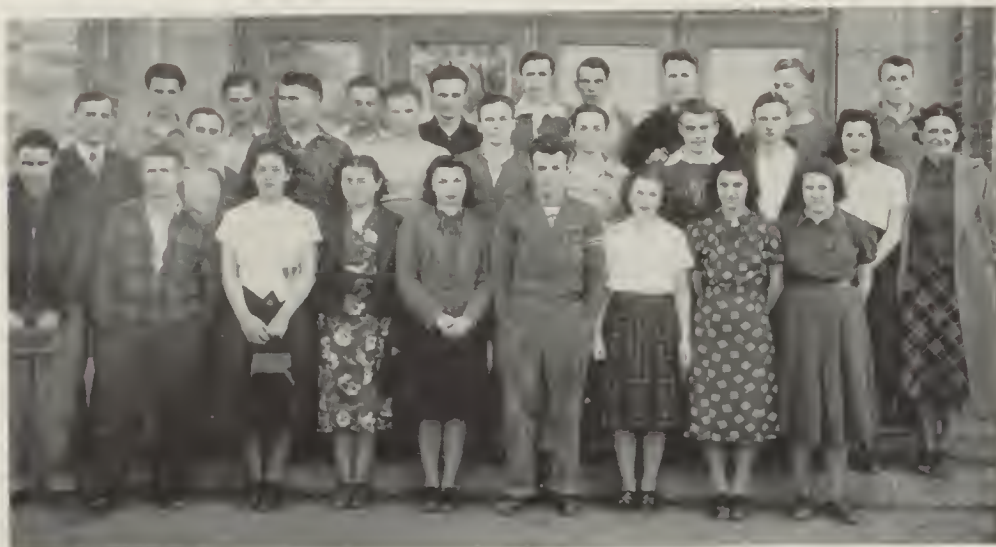
Milyne Allen  
Shirley Backman  
Carl Betten  
Earl Colgrove  
Jerry Doyle  
Betty Hewitt  
Rita Moser  
Dorothy Parks  
Gordon Polk  
Phyllis Anderson  
Don Baker  
Bill Braaten  
Hattie Crain

Evelyn Elmquist  
Fay Hughes  
Grace McGhee  
Marie McMann  
Betty Ratliff  
Agnes Appa  
Edythe Birge  
Evajean Bridewell  
Jerry Dempsey  
Frank Erickson  
Bob Luders  
Eunice Jackson  
Frank McRae  
Joyce Ratliff

Joyce Rhodes  
Kenneth Sale  
Eugene Town  
Billy Whipple  
Alene Steele  
Jean Rishton  
Jim Sarsfield  
Jack Bergman  
Marian Williams  
John Roberts  
Virginia Smith  
Helen Turner  
Francesca Burnette

● Young thespians of Rogers have their chance in the Junior Dramatic club, for freshmen and sophomores only. Two convocations are presented each year. Parties and outings make up the social activities. Ray G. Hubbard is club adviser.





First Row: Rogers, Kordus, Goble, Patterson, Elliot, Perry, Smith, Ellis, and Eng. Second Row: W. E. Doolittle (adviser), Petty, Weir, Johnson, Hughes, Deidiker, Ure, Tews, Fuller, and Rea. Third Row: Barwise, Nelson, Hassel, Novotny, Akins, Engle, Stussi, Anderson, and Gayda.

## Math Club

Al Akins .....	President
Brock Weir .....	Vice-President
Jim Ure .....	Secretary
Dorothy Fuller .....	Treasurer

### MEMBERS

Al Akins  
Fred Davies  
Jeanette Ellis  
Alton Hassell  
Charles Kordus  
Otho Nelson  
John Petty  
Eleanor Smith  
Jim Ure  
Grant Anderson

Don Diediker  
Erma Eng  
Don Hughes  
Darrold Matlock  
Art Novotny  
Gene Rogers  
Lloyd Stussi  
Brock Weir  
Jean Elliot  
Bob Barwise  
Howard Engle

Bob Johnson  
Daryl Nelson  
Mildred Patterson  
Melvin Shansby  
Norman Tews  
George Young  
Effie Goble  
Frank Petersen  
Eileen Cowles  
George Stein

● The Math Club was started to interest students in mathematics. To be eligible for the club, a student must have two years of mathematics and must be starting on the third. W. E. Doolittle is club adviser.



First Row: Saltz, K. Tang, Shulkin, Broadhead, Lauder, Templin, Alfstad, and Katahira.  
 Second Row: Carter, Williams, Foster, Mead, Gumm, Terry, and Nixon. Third Row: Pickens,  
 Mobley, Berg, Erikson, and W. Tang.

## Montero Club

### First Semester

Joe McBreen .....  
 Chuck Gumm .....  
 Jack Eller .....  
 Miles Ertel .....  
 Sidney Mead .....

#### President

#### Vice-President

#### Secretary

#### Treasurer

#### Sergeant-at-Arms

### Second Semester

Sidney Mead .....  
 Ralph Berg .....  
 Don Carter .....  
 Ken Katahira .....  
 Walter Mobley .....

### MEMBERS

Bill Alfstad  
 Ralph Berg  
 Joe McBreen  
 Don Broadhead  
 Don Carter  
 Jack Eller  
 Miles Ertel  
 Frank Erickson

Chuck Gumm  
 Ken Katahira  
 Don Lauder  
 Neil McCloud  
 Sidney Mead  
 Walt Mobley  
 Bill Nixon  
 Ted Oster

Vincent Pickens  
 Warren Saltz  
 Don Shulkin  
 Kenny Tang  
 Wesley Tang  
 Neal Templin  
 Earl Terry  
 Don Williams

● Boys who are interested in outdoor life may become members of this active Rogers club. Hiking, camping, fishing, hunting, skiing, and skating trips are taken during school months under supervision of J. W. Black, adviser.



**First Row:** Morse, Henry, Bell, White, Kludt, Carter, Williamson, Gaines, and Mrs. Van Austen (adviser). **Second Row:** Larson, Jorgenson, Bysegger, Lipps, and Wilson. **Third Row:** Hinz, Bronson, Bonser, Hendrickson, Lammers, Johnson, Wendell. **Fourth Row:** Wynkoop, and Gumm.

## O. G. A. Club

### First Semester

Vivian Larson	President
Rosina Johnson	Vice-President
Esther Carlson	Secretary
Laura Morse	Treasurer
	Sergeant-at-Arms

### Second Semester

Frances Williamson
Charles Gumm
Hazel Mae Bronson
Jeanette Hendrickson
Don Carter

### MEMBERS

Dolores Bell	Mamie Hinz	Mary Lois Wynkoop
Marian Bonser	Rosina Johnson	Erma Lipps
Hazel Mae Bronson	Phyllis Lammers	Don Carter
Isla Bysegger	Vivian Larson	Jim Kludt
Esther Carlson	Laura Morse	Betty Gaines
Mamie Jean Casey	Edith Wendell	Chuck Gumm
Jeanette Hendrickson	Gladys White	Helen Jorgensen
Maxine Henry	Frances Williamson	Beverly Wilson

● Any John Rogers student who has completed one semester of shorthand and with A or B rating in all subjects plus a satisfactory citizenship rating is eligible for membership.

O. G. A. is a branch of the national shorthand honorary and was organized at John Rogers three years ago. All charter members held 120-word gold pins.

Adviser of the club is Mrs. Ethel Van Austen.





First Row: Ure, Riek, Culbertson, Henry, Wolferman, L. T. Byrne (adviser). Second Row: Moss, Lammers, Fletcher, Love, Pershall, and Betten.

## Quill and Scroll

### First Semester

Marian Ponto	President
Phyllis Lammers	Vice-President
Evalyn Olson	Secretary
Claude Anders	Treasurer
Paul Betten	Corresponding Secretary

### Second Semester

Paul Betten
Phyllis Lammers
Alveretta Culbertson
Maxine Henry
Mary Jane Wolferman

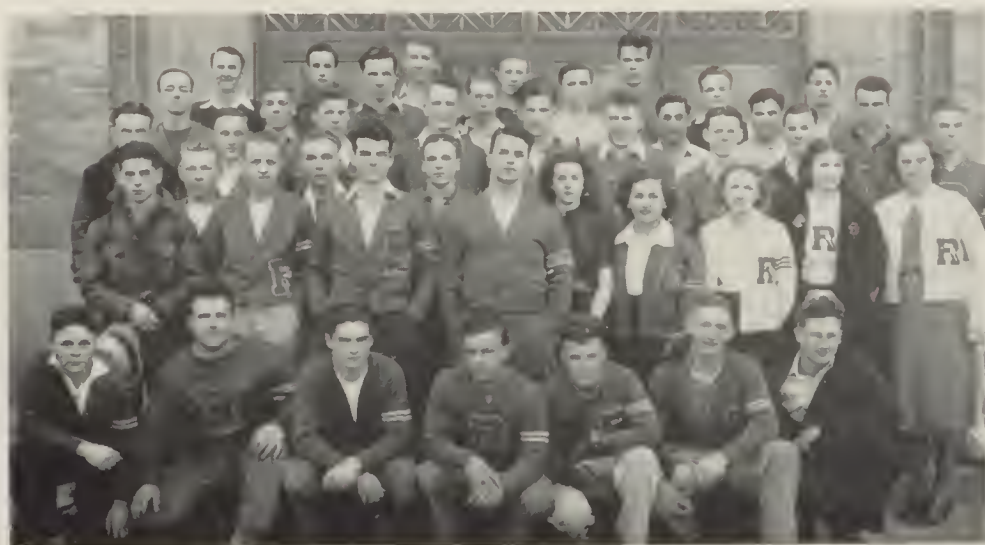
### MEMBERS

Marian Ponto  
Claude Anders  
Alveretta Culbertson  
Janet Riek  
Don Moss

Evalyn Olson  
Paul Betten  
Maxine Henry  
June Love  
Mary Jane Wolferman

Jim Ure  
Phyllis Lammers  
Ellen Pershall  
Jeanne Fletcher

● Quill and Scroll is a national honorary society for high school journalists. Students working on the Record staff are eligible for membership. L. T. Byrne is adviser.



**First Row:** Williamson, Morris, Broadhead, Burkhardt, Perry, Saltz, and Peters. **Second Row:** Cozza, Oberg, Kludt, Bevan, Brown, Hughes, Lewis, Edmondson, Priano, Schemmel, Thompson, Larson. **Third Row:** Novotny, Hassel, Peterson, Reynolds, Mead, Weir, Carter, Eller, and Williams. **Fourth Row:** Sandberg, Marier, Danielson, Allen, Akins, Osso, Wakeley, Updike. **Fifth Row:** McBreen, Steptoe, Allen, Williams, Berg, Sparks, Gottwig.

## "R" Club

Ralph Berg	President
Sid Mead	Vice-President
Vivian Larson	Secretary

### MEMBERS

Bob Johnson  
 Bob Kroske  
 Art Maye  
 Del Brown  
 Warren Franklin  
 Al Akins  
 Elton Allen  
 Roy Allen  
 Ralph Berg  
 Paul Bergman  
 Al Bevan  
 Roy Bishop  
 Don Broadhead  
 Glen Burkhardt  
 Don Carter  
 Victor Cobb  
 Bob Danielson  
 Walt Decker  
 Gordon Dennis

Fern Edmondson  
 Jack Eller  
 Gordon French  
 John Goodman  
 Don Gottwig  
 Alton Hassell  
 Don Hughes  
 Harold Irby  
 Clayton Jilbert  
 Jim Kludt  
 Dean Ladd  
 George Ladd  
 Vivian Larson  
 Clifford Lewis  
 Sidney Mead  
 Jack Merritt  
 Dan Morris  
 Frank Nelson  
 Art Novotny  
 Ben Oberg

John Osso  
 George Oxrieder  
 George Perry  
 Bob Peters  
 John Petty  
 Carol Priano  
 Ed Reynolds  
 Gene Robbins  
 Warren Saltz  
 Mary Schemmel  
 Gordon Steptoe  
 Earl Terry  
 Shirley Thompson  
 Alan Updike  
 Charles Wakely  
 Brock Weir  
 Don Williams  
 Bob Williamson  
 William Cozza  
 Wilbert Hufford

● Students earning R's in any sport recognized by the school are automatically members of the "R" club. The club is a participant in all sports and requires no dues. M. J. Benjamin is the club adviser.



First Row: Jones, Stein. Second Row: True, Wood, Hutchins. Third Row: Carter, Anderson.

## Radio Club

Bob Anderson .....	President
John Stein .....	Vice-President
Zane Wood .....	Secretary
Frank Hutchins .....	Treasurer
Bob Anderson .....	Technician
Carl Jones .....	Sergeant-at-Arms

### MEMBERS

Art True  
John Stein  
Alan Updike

Frank Hutchins  
Zane Wood  
Bob Anderson  
Ken Tang

Douglas Carter  
Carl Jones  
John Petty

● The Radio club stimulates interest in Rogers boys in securing amateur licenses for stations. Boys who like this type of work are eligible for membership. Adviser of the club is James Eaman.



First Row: Enos, Pizzillo, Stinger, Gordon, Bough, Fullerton, Zat, Foster, Anderson.  
 Second Row: Mrs. Boyce (adviser), Johnson, Petty, Montague, Simonson, Ellingsen, Updike,  
 Luse, Holmes. Third Row: Kordus, Crook, Jones, Jackman, Maye, Carney, Finn, Jansen, Kelly.

## Spanish Club

### First Semester

James Turner  
 Art Maye  
 Fern Gordon  
 Eileen Cowles  
 Clifford Jones

### President

Vice-President

Secretary

Treasurer

Sergeant-at-Arms

### Second Semester

Doris Olson

James Turner

Yolanda Zat

Johnny Finn

Patrick Carney

### MEMBERS

Helen Baumgartner  
 Virginia Baumgartner  
 Vaughn Bryant  
 Patrick Carney  
 Eileen Cowles  
 Lois Crane  
 Jim Crook  
 Betty Jo Ellingsen  
 June Enos  
 Johnny Finn  
 Fern Gordon  
 Ruth Holmes  
 Berniece Hurnelt  
 Wesley Hurnelt

George Jackman  
 Bob Jansen  
 Clifford Jones  
 Rosemary Johnson  
 Charles Kordus  
 Genevieve Luse  
 Katherine Luse  
 Walt Decker  
 Art Maye  
 Bob Maye  
 Doris Montague  
 Doris Olson  
 John Petty  
 Angelica Pizzillo  
 Selma Simonson

Maxine Stinger  
 James Turner  
 Rosemary Updike  
 Yolanda Zat  
 Ruth Baugh  
 Theo Anderson  
 Alta Foster  
 Mildred Patterson  
 Howard Engle  
 Isabel Smith  
 Clara McGhee  
 Barbara Wagner  
 Lark Myre  
 Lon Kelly

● Spanish students are eligible for the Spanish Club, which is a member of the World League whose interest is to further international peace through the youth of the nations. Mrs. Marie Boyce is the adviser.





1. Thompson.  
2. Stein-Alfstad.  
3. Colgrove.  
4. McKinney.

5. Track rats.  
6. Convict No. O.  
7. Smiley.

8. Young and Williams.  
9. Sisters.  
10. Beasley and ?

11. Lipps and Meltvedt.  
12. Gottwig, La Telle.  
13. Culbertson.  
14. Coach.



FIRST SEMESTER

First Row: Frost, Miller, Smith. Second Row: Hanson, Dalke, Carter.



SECOND SEMESTER

First Row: Ellis, Dickey, Hunt, Schendel, Brooks, Simonson, Ziegler, Hendrickson, Culbertson, Smith, Fletcher, Montague. Second Row: Kerr, Earls, Miller, Frost, Ure, Meyers, Scott, Caughe, Beck, Lundquist, Kiefer, Gerkenmeyer. Third Row: Steele, K. Tang, Yenney, Whipple, W. Tang, Moran, Roestel, Carter, Tews, Nelson, Novotny. Fourth Row: Brotherton, Roberts, Olsen, Dalke, McInnis, Sjostrom, Ayler, Hufford, and Barnhart.

## Hall Patrol

● Co-captains were Don Steele and Vivian Larson. Lieutenants were Dorothy Schendel, Doris Carney, Jeanne Fletcher, Barbara Wagner, Helyn Brooks, Warner Burrill, Jim Ure, Don Shulkin, Johnny Olsen, Kenneth Tang.



FIRST SEMESTER

First Row: Venti, Hughes, Broadhead, Perry. Second Row: Peterson, Marier, Reynolds, Wakeley, Third Row: Updike, Berg, Danielson, Akins, and Williams.



SECOND SEMESTER

First Row: Steele, Johnson, Broadhead, Burkhardt, Kludt, and Carter. Second Row: Wakeley, Morris, Mead, Akins, Hughes, and Williams.

## Fire Squad

● Fire drills, explosions, and earthquakes are taken care of by the fire squad. The organization is supposed to be trustworthy and calm in cases of emergency. Adviser is E. R. Jinnett.





## FIRST SEMESTER

First Row: Sicilia, Thorson, Rodolph, Hoxtell, and Riek. Second Row: Tobler, Fletcher, Cafero, Taylor, Marler, McCafferty. Third Row: Culver, Brewer, Beedle, Schindler, Thompson, Reynolds, and Olson.



## SECOND SEMESTER

First Row: Meharry, Fleming, Crain, Sicilia, Thorson, Petretee, Morse, Angel, Hobbs, and Jackson. Second Row: Davis, Striker, Cassidy, Rodolph, Williams, Craig, Olson, McCafferty, Meranda, and Armstrong. Third Row: Carlson, Marler, Montague, Frost, White, Aigner, Randall, Reeder, Anderson, and Speck.

## Study Hall and Library Workers

● Study hall workers are headed by Mrs. Mary Slater; library workers, Mrs. Carolyn Kapek; Cafeteria study workers, Mrs. Leta Osborne, and Mrs. Lucille Youngman.





. . . *Fine Arts*





**First Row:** Pascuzzi, Shirley, Anderson, Foster, McDaniels, Elijah, Hansen, and E. R. Jinnett (adviser). **Second Row:** Updike, Westland, Young, Kludt, Weir, and Payne. **Third Row:** Petty, Dalke, Tesdahl.

## Debate

Date	Opponent	Decision
November 11 .....	Fairfield negative at Rogers.....	.....Rogers
December 26 .....	West Valley affirmative at West Valley..	.....Rogers
January 13 .....	Gonzaga affirmative at Rogers.....	.....Rogers
January 20 .....	Rockford negative at Rockford.....	.....Rogers

### Debate Squad

Zelda Lee Anderson	John Westland
George Young	Harold Payne
Warren Franklin	Chester Hansen
Allen Updike	

● Question: Resolved, that Great Britain and the United States should form an alliance.

Debaters of Rogers won the cup from Gonzaga for the championship of the Northeast District; at the meet in Pullman, Rogers won debates from Rosalia and Asotin and lost both debates to Colfax.

E. R. Jinnett heads the team and has coached debate for twelve successful years.





Sitting: Entenmann, Overland, True, Kludt, Waller, Pickens, Ruark, Anderson, Fletcher, Armstrong, Bysegger, Steele, Miller, Jackson, Culbertson, Barnhart, Whittaker, and Nelson. Standing: Miller, Crane, Olsen, Stoffer, Hicks, Allen, Smith, Ertel, Rogers, Finley, St. Onge, Watts, Watts, Casey, Tesdahl, Venti, Gummi, Curryer, Jones, Wagner, Brewer, Ratliff, Larson, Mobley, Smith, Bryant.

## "Once in a Lifetime"

### CAST

Stanley Tesdahl .....	George Lewis
Florence St. Onge..	May Daniels
Allan Finley .....	Jerry Hyland
Clifford Jones .....	Porter
Isla Bysegger .....	Helen Hobart
Mamie Jean Casey .....	Susan Walker
Helen Ratliff .....	Mrs. Walker
Sam Venti .....	Meterstein
Don Steele .....	Herinan Glogauer
John Smith .....	Lawrence Vail
Lois Crane .....	Miss Leighton
Charles Gummi .....	Weisskopf
James Brewer .....	Flick-Reporter
Walter Mobley .....	Bishop
James Kludt and Arlene Ruark .....	First Couple
Vincent Pickens and Elaine Waller .....	Second Couple
Phyllis Stoffer .....	Cigarette girl
Mary Lee Larson .....	Coat check girl
Alveretta Culbertson .....	Phyllis Fontaine
Eunice Jackson .....	Florabel Leigh
Phyllis Anderson and Anita Armstrong .....	Maids
Miles Ertel and Milyne Allan .....	Chauffeurs
John Olsen .....	Bellboy and artist
Dawnelda Hicks .....	Miss Chasen
Harold Curryer and Stanley Wagner .....	Policeman
Wanda and Nada Watts .....	Pages
Vanghn Bryant .....	Rndolph Kammerling
Felix Entenmann and Earl Barnhart .....	Electricians
Elizabeth Smith, Margaret Miller, Arlene Ruark, Elaine Waller .....	Bridesmaids
Lee Overland and Frank Nelson .....	Lightmen
Bob True and Charles Whittaker .....	Cameramen
Jeanne Fletcher .....	Script girl
James Kludt .....	Lewis' secretary



First Row: Petty Tesdahl, Bysegger, J. L. Purdy (director), Casey, Young, Waller, Olsen, Armstrong. Second Row: Rogers, Mobley, Jackson, Swartz, E. Smith, J. Smith.

## "Tovarich"



### CAST

George Young .....	Mikail
Mamie Jean Casey .....	Grand Duchess Tatina Petrovna
John Smith.....	Brekenski
Anita Armstrong .....	Olga
Walt Mobley .....	Chauffaurier Dubieff
John Petty.....	Marteleau
Isla Bysegger .....	Fernande Dupont
Stanley Tesdahl .....	Charles Dupont
Johnny Olsen.....	George
Elaine Waller .....	Helene
Elizabeth Smith.....	Louise
Helen Ratliff .....	Madame Von Hemirt
Eunice Jackson .....	Madame Chauffaurier Dubieff
Bob Swartz.....	Gorotchenko

● The spring all-school play, "Tovarich", was presented in the Rogers auditorium March 31. It was the story of Mikail, a general of the Cossack cavalry, and his wife who are living in a shabby Parisian apartment and starving, although there is 4,000,000,000 francs in the bank in their name.

J. L. Purdy directed and Florence Rogers assisted.



First Row: Freeman, Denman, Drake, Zumhoff, Overland. Second Row: True, Entenmann, Nelson, and Miller.

## Stage Crew

### First Semester

Nelson ..... Stage Manger  
 Entenmann ..... Fly man  
 Overland ..... Curtain  
 Miller ..... Assistant Electrician  
 Graham ..... Electrician  
 Hunsberger ..... Stage hand

### Second Semester

Nelson  
 Entenmann  
 Overland  
 Miller  
 Box  
 Hunsberger

● Although they gain little recognition, these students do much in furthering the activities of the school. They paint scenes for operettas and plays; handle all the lighting, moving of furniture; and regulate curtains for all stage productions. The adviser is J. L. Purdy.



Standing, Left to Right: Murphy, Smith, Brotherton, Steele, Glen B. Starr (director), and Stansbury. Back Row: Wesche, Scheel, Kerr, Williams, Sacks, L. Earls, Beedle, Moreland, Johnson, White, McConnell, W. Tang, Bridewell, Jelnick, Freeman, Simpson, Betten, Lyberger, Eastburg, Woodell, Luders, Christenson. Second Row From Back: Updike, Nisley, Letha Earls, Melnns, Tomlinson, McDonald, Fowler, Jenkins, Crook, Goff, Lucas, Coldeen, Sampson, K. Tang, Yenney, Picton, and Warren. Third Row From Back: Cass, Carter, Pederson, Elmquist, Harris, Ladd, Sullivan, Kludt, Malbe. Inner Circle: Weller, Simonson, Nixon, O'Donnell, Roberts, Van Slyke, Thompson, B. Whipple, L. Whipple, Erickson.

## Band

### MEMBERS

Ron Beedle  
Paul Betten  
Eva Jean Bridewell  
Mary Jane Cass  
Arnold Christianson  
Marjorie Coffey  
Gerald Coldeen  
Fred Cook  
Roland Dhondt  
Leland Earls  
Letha Earls  
Chester Earls  
Dale Eastburg  
Spencer Fowler  
John Goodman  
Bill Harris  
John Jelinek  
Hobart Jenkins  
Bernice Johnson  
Betty June Johnson  
Thelma Johnston  
Estelle Jorgenson  
Don Kerr  
Jim Kludt

George Ladd  
Mary Lightfoot  
Taze Lucas  
Bob Luders  
Ivan Melnns  
Billy Miller  
Walter Mobley  
Evelyn Nisley  
Bill Nixon  
Tom O'Donnell  
Dorothy Pederson  
Lewis Picton  
John Roberts  
John Sampson  
Billy Sacks  
Melvin Scheel  
John Standaart  
Lloyd Stansbury  
Mary Eleanor Sullivan  
Wesley Tang  
Kenneth Tang  
Jay Tomlinson  
Daren Treffry  
Rosemary Updike

Wesley Warren  
Bertie Waldrop  
Rodney Wagner  
Christiana Wesche  
Leroy Whipple  
Billy Whipple  
Clayton White  
Ralph Wooddell  
Evelyn Elmquist  
Frank Erickson  
Eugene Freeman  
Carolyn Goff  
Richard Maine  
John McConnel  
Ward McDonald  
Roger Meltvedt  
Don Steele  
Selma Simonson  
Joe Simpson  
Elston Van Slyke  
Frances Woirhay  
Dudley Yenney  
Wilmont Ross

● The band, under the direction of Glenn B. Starr, plays at all football games and presents marching exhibitions between halves. Last season at the Merry-go-round game, the Rogers band joined with the other high school bands in staging a colorful pageant under the lights.

They also perform at pep convocations, P.-T. A. programs and parades.





**Inner Circle:** Waters, Culbertson, Bodey, Glenn B. Starr (director), Starry, Skeffington, and Johnson. **Second Circle:** Strasser, Bradshaw, Weston, Weller, Bartholomew, Oxreider, Colgrove, and Luding. **Third Circle:** Cutler, Cass, Main, Melnnis, Stansbury, Allen, Banner, Johnston, Fowler, Sullivan, Johnson, Glover. **Fourth Circle:** Tomlinson, Gale, Terry, Betten, Kraut, Williams. **Standing:** Jawort, Olson, Anderson, Denman, Steele, Brotherton.

## Orchestra

### MEMBERS

Milyn Allan  
Paul Betten  
Elmer Burrill  
Marjorie Culbertson  
Spencer Fowler  
Alice Jawort  
Pearl Kidd  
Kathleen Main  
George Oxrieder  
Jay Tomlinson  
Doris Williams  
Mary Eleanor Sullivan  
Grace Anderson  
May Belle Bodey  
Douglas Carter  
Alveretta Culbertson  
Helen Gale

Ethelyn Johnson  
Kathryn Kraut  
Edith Meicho  
Gordon Polk  
Virginia Smith  
Dorothy Waters  
Marian Williams  
Marian Terry  
Jean Banner  
Mabel Bradshaw  
Mary Jane Cass  
Virginia Cutler  
Tom Glover  
Bonnie Johnston  
Ida Kuesterman  
Ivan Melnnis  
Jeanne Rishton

Lloyd Stansbury  
Jo Weller  
Jean Starry  
Annamae Olson  
Alice Bartholomew  
Sidney Brotherton  
Earl Colgrove  
Bessie Denman  
Bud Gray  
Violet Johnson  
Bennie Luding  
Harriet Morgan  
Patsy Skeffington  
Catherine Strasser  
Anna Marie Weston  
Don Steele

● The orchestra furnishes music for school plays and graduation exercises, accompanies operetta casts and presents a spring festival each year. Glenn B. Starr is the director.



#### VESTED CHOIR

First Row: Polk, Glass, Moore, Wynkoop, Ratliff, DeChenne, Earls, Raaberg, Shaw, Blodgett, Smith, Stanley. Second Row: Curryer, Denman, Johnson, Anderson, Olson, Carlson, Castle, Collins, Melcho, Michel, Bysegger. Third Row: Bryant, Hunsberger, Harris, Curryer, Case, Borlin, Leamer, Wagner, Reynolds, Concie, Holcomb, Fish, Earls. Missing Member: Clara McGee.

## "Hollywood Extra"

#### CAST

Uncle Abner, Postmaster .....	Vaughn Bryant
Irene, Abner's ward .....	Rosina Johnson
Bob Wilcox, Irene's lover .....	Harold Curryer
Deborah Wilcox .....	Gladys Smith
Hannah Hilltop .....	Vera Mac Michel
Corporal Benson .....	Stanley Wagner
Rita Lupa .....	Beatrice DeChenne
Marty Williams .....	Lester Leamer
Harold de Bunker .....	Johnny Olsen
Isaac Goldenrod .....	Sam Venti
Soldier .....	Roger Case
Attendants .....	Betty Wynkoop and Flora Curryer

● On January 13 of this year, the two act operetta, Hollywood Extra, was presented in the Rogers auditorium. The vocal instructor was Blanehe Hill Swenson, dramatic instructor was J. L. Purdy, the orchestra was under Glenn B. Starr, and the dancing was in charge of Miss Marion LeFevre.

The singing chorus was made up of 75 members and the program included nine ballet numbers. Business manager was Kenneth McRae and Harold Hawkins was assistant manager.



First Row: Glass, Hughes, Nesbitt, Ratliff, McMahon, Shaw, De Chenne, Earls, Raaberg, Merritt, G. Smith. Second Row: Pearson, Curryer, Johnson, Flaughner, Armstrong, Wynkoop, Scott, Williams, Blodgett, and Carpenter. Third Row: Melcho, P. Smith, Denman, Moss, Bonser, Carlson, Castle, McGee, and Collins.

## Girls' Glee Club

### MEMBERS

Dorothy Armstrong  
 Franceda Burnett  
 Helen Collins  
 Dolores Detmer  
 Doris Knight  
 Grace McGee  
 Mary Carol Moss  
 Iva Roberts  
 Phyllis Smith  
 Hermia Vincent

Jean Bonner  
 Evelyn Carpenter  
 Lilly Cox  
 Clarice Flaughner  
 Mary Lee Larson  
 Betty McGhee  
 Constance Nesbitt  
 Virginia Sarsfield  
 Adele Sutton  
 Doris Williams

Jean Bonser  
 June Castle  
 Gladys Daniels  
 Fay Hughes  
 Jean Leslie  
 Marie McMahon  
 Dorothy Parks  
 Ethel Scott  
 Maxine Valentine

Blanche Hill Swenson .....Director

## Choir

### MEMBERS

Grace Anderson  
 Doris Carlson  
 Flora Curryer  
 Letha Earls  
 Clara McGhee  
 Sylvia Moore  
 Betty Ratliff  
 Betty Wynkoop  
 Roger Case  
 Billy Harris  
 Margaret Blodgett  
 June Castle

Beatrice De Chenne  
 Betty Glass  
 Edith Meicho  
 Annamae Olson  
 Carol Shaw  
 Harold Borlin  
 Harold Curryer  
 Harland Holcomb  
 Isla Bysegger  
 Helen Collins  
 Mary Denman  
 Rosina Johnson  
 Vera Mae Michel

Lucille Raaberg  
 Gladys Smith  
 Vaughn Bryant  
 Russell Fish  
 Lester Leamer  
 Gordon Polk  
 Mac Reynolds  
 Wayne Hunsburger  
 Robert Concie  
 Leland Earls  
 Kenneth Stanley  
 Stanley Wagner

Blanche Hill Swenson .....Director



First Row: Wolferman, Henry, and Ostby. Second Row: Hendrickson, Fletcher, Culbertson, Riek, McKinney, and Click. Third Row: Gottwig, Novotny, Ure, Rogers, Love, Lipps, Pershall, and Bonser. Fourth Row: Moss, Casey, Thompson, Danielson, Betten, Swartz, and L. T. Byrne (adviser).

## *Treasure Chest*

Editors .....	Alveretta Culbertson, Phyllis Lammers, James Ure, Maxine Henry
Photography .....	Don Moss, Jeanette Hendrickson
Art Editors .....	Bob True, Walter Nelson
Sports Editors .....	Bob Danielson, Erma Lipps
Clubs .....	June Love
Snapshots .....	Art Novotny
Class History .....	Janet Riek
Girls' League and Boys' Federation .....	Montana Ostby
Calendar .....	Ellen Pershall
Features .....	Maxine McKinney
Humor .....	Jeanne Fletcher
Copy Readers .....	Bob Swartz, Paul Betten
Activity Lists .....	Florence Rogers, Leo Moffatt, Rudolph Shaw, Evalyn Olson
Departmental .....	Virginia Cutler
Advertising Manager .....	Maxine McMann
Circulation Manager .....	Maxine Murphy
Subscription Manager .....	Rosina Johnson
Subscription Solicitors .....	Dick Truscott, Jeanette Hendrickson, Elvera Via, Phil Glenn, Gordon Polk, Dorothy Tee, Mary Stryker, Janet Riek, Maxine McKinney, Mary Jane Wolferman, Florence Rogers, Bob Danielson, Maxine Henry, Virginia Cutler, Opal Sills, Jim Snyder, Bob True, Sidney Mead, Isabel Smith, Rosie Rizzuto, Merle Hart, Jack Merritt, Jeanne Fletcher, Bob Materne, June Love, Ellen Pershall, Montana Ostby, Rex Hansen, Bob Swartz, Dorothy Bredesen, Helen Ratliff, Dorothy Fuller, Nellie Burkhardt, Modelle Ericksen, Paul Betten, Erma Eng, Roy Bishop, Gerry Davis, Harvey Smith, Leo Brown, Don Broadhead, Dawnelda Hicks, Erma Lipps, Maxine Murphy.
Advisers .....	A. P. Coburn, business; F. C. Hughes, art; L. T. Byrne, editorial





First Row: Polk, Kroske, Clifford, McMann, Hansen, Steele, and Stanley. Second Row: L. Thad Byrne (adviser), Olson, Lammers, Zumhoff, Fletcher, Bossio, and McGhee. Third Row: Berger, Cox, Betten, Thompson, Ponto. Fourth Row: Pickens, Hicks, Allen, Cady, Anders, and Swartz.

## Rogers Record

### FIRST SEMESTER

#### EDITORIAL

Bob Swartz	Editor-in-Chief
Paul Betten	Copy Chief
Dawnelda Hicks	Assignment Editor
Esther Bossio	Feature Editor
Howard Clifford	Sports Editor
Marie Zumhoff	Art Editor

#### ASSISTANTS

Beulah McGhee	Bob Berger	Phyllis Lammers
Claude Anders	Verna Hanson	Elton Allen
Jeanne Fletcher	Bob Kroske	Ethel Cox
Jack Cady	Roy Williams	Evalyn Olson
	Marian Ponto	

#### BUSINESS

Maxine McMann	Business Manager
---------------	------------------

#### ASSISTANTS

Russell Thompson	Kenneth Stanley
Vincent Pickens	Gordon Polk



First Row: Wolferman, Henry, Bredesen, and Ostby. Second Row: Lipps, Hendrickson, Riek, Cutler, Pershall, McKinney, and Truscott. Third Row: Hicks, Lammers, Fletcher, Love, Novotny, Click, and Betten. Fourth Row: Moss, Thompson, Pickens, Danielson, Ure and L. T. Byrne (adviser).

## Rogers Record

### SECOND SEMESTER

#### EDITORIAL

Paul Betten	Editor-in-Chief
June Love	Copy Chief
Maxine Henry	Assignment Editor
Janet Riek	Feature Editor
Bob Danielson	Sports Editor
Don Gottwig	Art Editor

#### ASSISTANTS

Don Moss	Alveretta Culbertson	Jeanette Hendrickson
Art Novotny	Jim Ure	Dawnelda Hicks
Erna Lipps	Montana Ostby	Marian Bonser
Ellen Pershall	Dorothy Bredesen	Jeanne Fletcher
Florence Rogers	Mary Jane Wolferman	Virginia Cutler
	Phyllis Lammers	Maxine McKinney

#### BUSINESS

Russell Thompson	Business Manager
------------------	------------------

#### ASSISTANTS

Elmer Click	Dick Truscott	Carl Betten
Vincent Pickens	Gordon Polk	

# Calendar

## FIRST SEMESTER

### SEPTEMBER

- 7—School opens.
- 23—Football: Rogers 25; West Valley 0.
- 27—Open House P.-T. A.
- 28—All School Opening.
- 20—Football: Rogers; Cocur d'Alene.

### OCTOBER

- 6—Football: Rogers 0; Gonzaga 14.
- 13—Football: Rogers 20; North Central 7.
- 17 and 18—Teachers' Institute.
- 20—Football: Lewis and Clark 14; Rogers 0.
- 27—Dads' and Daughters' Banquet.
- 28—Football: Rogers 0; North Central 0.

### NOVEMBER

- 4—"On Stage" Washington State Theater.
- Football: Rogers 0; Lewis and Clark 0.
- 18—Movie Camera purchased.
- 19—Football: Rogers 13; Gonzaga 0.

### DECEMBER

- 2—Football letter con.
- 2-3—Once in a Lifetime.
- 9. Sadie Hawkins Dance. Honor Society con.
- 16—Basketball: Rogers 54; West Valley 30.
- 20—Harding Debate con.
- 21—Yuletide program.

### JANUARY

- 10—Basketball: Rogers 19, Lewis and Clark 22. Band concert.
- 12—Basketball: North Central 15; Rogers 19.
- 13—"Hollywood Extra."
- 17—Basketball: Rogers 27; Gonzaga 23.
- 18—Interscholar con.
- 19—Basketball: Rogers 26, Lewis and Clark 27.
- 20—Awards con.
- 21—Senior Prom.
- 22—Baccalaureate.
- 24—Graduation. Basketball: Rogers 23; North Central 32.
- 26—Basketball: Gonzaga 24; Rogers 45.
- 27—Footlights con; School closes.

## SECOND SEMESTER

### FEBRUARY

- 3—Annual Spring vodvil.
- 7—Basketball: Rogers 19, Lewis and Clark 31.
- 9—Basketball: North Central 34; Rogers 41.
- 14—Basketball: Rogers 43 Gonzaga 24.
- 16—Basketball: Lewis and Clark 34; Rogers 18.
- 21—Basketball: North Central 33; Rogers 30.
- 23—Basketball: Gonzaga 34; Rogers 31.

### MARCH

- 1—Seniors elect officers.
- 15—Awards con.
- 16—Radium con.
- 17—Harding Debate presents portrait.
- 21—Open house P.-T. A.
- 31—"Tovarich."

### APRIL

- 2-10—Spring vacation.
- 11—Spring Sports Queen con.
- 19—Baseball: Gonzaga at Rogers.
- 20—National Honor Society con.
- 25—Baseball: North Central at Rogers.
- 28—Track: Lewis and Clark at Rogers.

### MAY

- 3—Baseball: West Valley at Rogers.
- 5—Track: Rogers at Rogers.
- 9—Baseball: Rogers at Lewis and Clark.
- 11—Baseball: Rogers at Gonzaga.
- 12—Track: North Central at Rogers.
- 17—Baseball: Rogers at North Central.
- 19—District Track Meet.
- 25—Baseball: Lewis and Clark at Rogers.
- 27—State Track meet.
- 31—Baseball: Rogers at West Valley.

### JUNE

- 3—Senior Prom.
- 4—Baccalaureate.
- 7—Graduation.



. . . Sports







First Row: Mr. Ellingsen, Mr. Benjamin, and Miss Perkins. Second Row: Mr. Saltz, Mr. Mooberry, Mr. Elsensohn, and Mr. Black.

## *Sport Coaches*

**E. T. BECHER**—Rifle coach—received the responsibility of coaching the rifle team in 1936, coached them from the "C" division in the National Rifle Association standings, to a top position in the "B" division.

**M. J. BENJAMIN**—Athletic director and golf coach—enters an excellent golf team every year.

**J. W. BLACK**—Baseball coach and "B" squad coach—Coach Black produced a 1938 championship baseball team and also turns out the "B" squad football teams.

**CARL ELLINGSEN**—Head football coach—another new recruit to Rogers. He turned out one of the fightingest and scrappiest teams in the city league.

**JAMES ELSENSOHN**—Football line coach and assistant track coach—Letterman graduate of W. S. C. He has contributed much towards the success of the Pirate eleven.

**PAUL MacGOWN**—Freshman baseball and basketball coach—A new recruit to our coaching staff taking over the job of whipping the frosh into shape.

**JACK MOOBERRY**—Basketball and track coach—undertook the responsibility of basketball coach in 1935. Also taking over the job of track coach, he produced the 1937 city champions.

**MISS MABEL PERKINS**—Girls tennis coach—Came to Rogers as the girls' athletic director and in 1937 took over the coaching of girls tennis.

**L. W. SALTZ**—Tennis and freshmen football coach—Coach Saltz starts his coaching duties in the fall when the freshmen football campaign starts. His duties are also continued in the spring with his tennis team.



## FOOTBALL SQUAD

First Row: Peterson, Brown, Morris, Reynolds, Liberty, Saltz, Williams, Danielson, Johnson, and Weir. Second Row: Speck, Irby, Johnson, Waldron, Eller, Oster, Griffin, Moran, and Oberg. Third Row: Shulkin, Decker, Balch, Anderson, J. Sandberg, Berg, Akins, Lauder, and Moller. Fourth Row: Coach Ellingsen, Tortorelli, Wakeley, Perry, Slocum, Osso, Burkhardt, Sparks, Updike, and Broadhead. Fifth Row: Assistant Coach Elsensohn, Sutton, Petty, Randall, Stevens, Allen, Sandberg, and Assistant Coach Mooberry.

## Football Lettermen

### THIRD YEAR LETTERMAN

DAN MORRIS, Tackle, backbone of the line.

### SECOND YEAR LETTERMEN

AL AKINS, Fullback, extra point his specialty.  
 RALPH BERG, Tackle, scholar and athlete.  
 DEL BROWN, End, discovered himself.  
 BOB DANIELSON, Center, in the middle of everything.  
 CLIFFORD LEWIS, Tackle, he's got what it takes.  
 DICK LIBERTY, Fullback, come back for another crack at 'em.  
 TED OSTER, Quarterback, gave all he had.  
 IRVING PETERSON, End, injury handicapped this Swede.  
 ED REYNOLDS, End, Fullback, Center, always there in a pinch.  
 HARRY SPARKS, Guard, always fighting.  
 CHARLES WAKELY, End, a truly great player.  
 DON WILLIAMS, Halfback, outstanding back of the city.

### FIRST YEAR LETTERMEN

ELTON ALLEN, Tackle, too bad he hasn't another year.  
 GLEN BURKHARDT, Halfback, good things come in small packages.  
 HAROLD IRBY, Guard, small but mighty.  
 JOHNNY OSSO, Quarterback, when given a chance he came through.  
 GEORGE PERRY, Quarterback, realized his ambition.  
 WARREN SALTZ, Guard, will be missed next year.  
 EUGENE SANDBURG, Guard, shows the true Rogers spirit.  
 ALAN UPDIKE, Guard, would never say die.  
 BROCK WEIR, Tackle, a star in the making.



FIRST STRING FOOTBALL

First Row: Wakeley, Morris, Allen, Irby, Danielson, Saltz, and Reynolds. Second Row: Liberty, Osso, Burkhardt, and Williams.

# Football Schedule

Date	Opponents		
September 23 .....	.....Rogers. ....	25	West Valley ..... 0
September 30 .....	.....Rogers ..... 6		Couer d' Alene ..... 0
October 6 .....	.....Rogers. ....	0	Gonzaga .... 14
October 13 .....	.....Rogers. ....	20	North Central ..... 7
*October 20 .....	.....Rogers ..... 0		Lewis and Clark ..... 14
*October 28 .....	.....Rogers ..... 0		North Central ... 0
November 4 .....	.....Rogers ..... 0		Lewis and Clark ..... 0
November 18 .....	.....Rogers.....	13	Gonzaga .. 0

The star (\*) means the games played at night.

● After making a not-to-good start in the big Merry-Go-Round game on September 28, Rogers went on to win two and tie two out of six city gridiron clashes last fall, under the coaching of Carl Ellingsen, new gridiron mentor.

The Pirates finished in third spot in the city series behind Gonzaga and Lewis and Clark.

Highlights of the season was Rogers defeat over the highly touted Gonzaga in the final game of the year.





First Row: Johnson, Brown, Alfstad, Akins, Wakeley, Williams, Franklin. Second Row: Cartwright, Maloney, Lauder, Maye, Moran, Hufford. Third Row: Jack Mooberry (coach), Tang Alexander, Reynolds, Stevens, Carl Ellingsen (assistant coach).

## Basketball

### SQUAD

Albert Akins  
Bob Kroske  
Warren Franklin  
Art Maye

Ed Reynolds  
Don Williams  
Del Brown  
Jim Maloney

Bill Alfstad  
Don Lauder  
Chuck Wakeley  
Bob Johnson

### SEASON'S SUMMARY

Date	Opponent	Where Played	Score
January 10	Lewis and Clark	Lewis and Clark	19-22
January 12	North Central	Rogers	19-15
January 17	Gonzaga	Gonzaga	27-23
January 19	Lewis and Clark	Rogers	26-27
January 24	North Central	North Central	23-32
January 26	Gonzaga	Rogers	45-24
February 7	Lewis and Clark	Lewis and Clark	19-31
February 9	North Central	Rogers	41-34
February 14	Gonzaga	Gonzaga	43-25
February 16	Lewis and Clark	Rogers	18-34
February 21	North Central	North Central	30-33
February 23	Gonzaga	Rogers	34-31

● During the 1938-39 basketball season 19 games were played by the Buccaneers, 12 in which the Pirates were victorious.

Coach Mooberry's quintet ran up against hot competition in the city league but came out holding third position.

Lettermen who leave the Pirate quintet through graduation are: Al Akins, Ed Reynolds, Del Brown, Chuck Wakeley, and Bob Kroske.



**First Row:** Taylor, Lewis, and Burkhardt. **Second Row:** Decker, Eller, Munkers, Allen, Berg, Hassel, Johns, Collins, Johnson, Adams, Nickolson, Moore, Davis, and DeBolt. **Third Row:** Luders, True, Westland, Nelson, Curryer, Speck, Foster, Velling, Sacks, Ayers, Allan, Pebles, Gosset, and Sarsfield. **Fourth Row:** Jones, Brotherton, Gayda, MacI, Kempsey, White, Colegrove, Schuler, Peterson, Disclasio, Birdsell, Sutton, Erlwein, and Anderson. **Fifth Row:** Gottwig, Francis, Tripiett, Young, Stevens, Moran, Cozetto, Shaw, Nelson, Ellison, Wieber. **Sixth Row:** Davis, Peterson, Luthwood, Le Van, Thompson, Whaley, Taylor, Turner, Grovbart, and Sasal. **Seventh Row:** Elsensohn (assistant coach), Bauer, Moller, Cake, Goodman, Sandberg, Mooberry (head coach), Gaffney (assistant coach, alumni).

## Track

### SEASON'S SCHEDULE

Date	Opponent	Where Played
April 22 .....	Rogers Relays .....	Rogers
April 28 .....	Lewis and Clark .....	Rogers
May 5 .....	Gonzaga .....	Rogers
May 12 .....	North Central .....	Rogers
May 19 .....	District Meet .....	

### SQUAD MEMBERS

Goodman	Bowers	Lewis
Decker	Berg	Luthwood
Allen	Cake	Moller
Burkhardt	Curryer	Moore
Moran	Cuzzetto	Sandberg
H. Young	De Bolt	Munkers
Engle	Eller	Stevens
Brotherton	Erlwein	Taylor
Gottwig	Francis	True
Hassell	Gayda	Whaley
Adams	Gosset	Jones

● The track squad was largely composed of new fellows, and began their track season with Rogers relays. Coach Mooberry is vitally concerned with the freshmen as they will make up the squad next year.



First Row: Alfstad, Mead, Wakeley, Perry, Williams, Shulkin, Novotny, Bergman, Broadhead, Forsyth, Johnson, and Youngman. Second Row: J. W. Black (coach), Stussl, Jones, Langill, Wolferman, Benoschek, Coulson, Irby, Waldron, Shauvin, Tortorelli, and Templin. Third Row: Cobb, McBreen, Maloney, Lauder, Katahira, Montague, Benham, Nelson, Cummings, and Slenko (student coach).

## Baseball

### SEASON'S SCHEDULE

Date	Opponent	Where Played
April 19 .....	Gonzaga .....	Rogers
April 25 .....	North Central .....	Rogers
May 3 .....	West Valley .....	Rogers
May 9 .....	Lewis and Clark .....	Lewis and Clark
May 11 .....	Gonzaga .....	Rogers
May 17 .....	North Central .....	North Central
May 25 .....	Lewis and Clark .....	Rogers
May 31 .....	West Valley .....	West Valley

### SQUAD MEMBERS

Mead	Williams	Maloney
Langill	Irby	Katahira
Bergman	Shauvin	Cobb
Cummings	Nelson	Benoschek
Waldron	Jones	Benham
Wakeley	Forsyth	Alfstad
Shulkin	Broadhead	Novotny
Coulson	Johnson	Templin
Perry	Youngman	

● The baseball squad won most of their pre-season games and had six lettermen returning; they are: Chuck Wakeley, Paul Bergman, Don Williams, Sid Mead, George Perry, and Art Novotny. The coach is J. W. Black, who has coached many teams at Rogers, including last year's city champions.





First Row: Kludt, Pickens, Akins, Allan, Smith, Saltz. Second Row: Carter, Maye, Saltz, (adviser), Kroske, Davies.

## Boys' Tennis

Warren Saltz  
Jim Kludt  
Gordon Steptoe  
Bob Kroske

John Stein  
Fred Davies  
George Jackman  
Al Akins

Vincent Pickens  
Don Carter  
Art Maye  
Milyne Allan

● The squad turns out every Tuesday, Thursday and Friday, under the supervision of L. W. Saltz, coach.

## Freshman Track

● The freshman track squad enjoyed a favorable season this year under the coaching of the varsity coach Jack Mooberry. The squad was: Braaten, Peterson, Nerheim, Le Van, Sarsfield, Sasai, Sutton, Akins, Ayers, Birdsell, Mael, Nelson, Smith, Town, Grayhort, White, Shuler, Kempsey, Allan, Barnett, Dis-easio, Dotson, Weiber.

## "B" Squad Football

● The "B" squad didn't fare so well, winning only one game and dropping three. The coach of the "B" squad is Mr. Black.

Likely prospects for the varsity squad from the freshman and "B" squads are: Del Baleh, Eugene Cozetto, Alfred Bays, Pat Chauvin, Claire Peterson, Elliot Weir, Harold Akins, Dick Nelson, Bill Nelson, and Morris Nelson.





First Row: Bergman, Block, Wakeley. Second Row: Dhondt, Akins. Third Row Milton Benjamin (adviser).

## Golf

### SCHEDULE

April 22, Saturday.....	Lewis and Clark vs. Rogers .....	(Indian Canyon)
April 29, Saturday .....	North Central vs. Rogers .....	(Indian Canyon)
May 6, Saturday.....	Gonzaga vs. Rogers .....	(Downriver)
May 13, Saturday.....	Lewis and Clark vs. Rogers .....	(Downriver)
May 20, Saturday .....	North Central vs. Rogers .....	(Downriver)
May 26, Saturday .....	Gonzaga vs. Rogers .....	(Downriver)

● The golf squad enjoyed a good season this year under the direction of Coach M. J. Benjamin. The matches were played on the different city links.

Returning lettermen are: Charles Wakeley, Roy Bishop, Al Akins, Willie Cozza.

## Freshman Football

● The freshmen enjoyed a favorable season this year under the coaching of Mr. MacGown. Their schedule consisted of games with the other high school frosh and junior highs. The squad consisted of Akins, Arnold, Anderson, Brannon, Braaten, Breedon, Boisard, Brown, Brouillard, Burchett, Emch, Hawke, Franklin, Hendrickson, Hill, Hutchins, Lamon, Larson, Lukaszski, MacI, Mitchen Peterson, Roberts, Rigan, Shulkin, Stansbury, Sale, Scott, Sweet, Trudeau, Walker, Wimpy, Wheeler, Winger, Hagman, Fish, Strand.



First Row: Kordus, Dennis, Jenkins. Second Row: Ladd, Merritt. Third Row: Stirling.

## Rifle Team

### MEMBERS

Gordon Dennis  
Hobart Jenkins

Jack Merritt  
Charles Kordus

George Ladd  
Oscar Stirling

● These six boys have shot the highest score consistently and are considered to be the team. E. T. Beeher is coach.

## Freshman Basketball

● The freshman basketball team enjoyed a fairly successful season. They were coached by Paul MacGown. The squad members were: Akins, Sweet, Nelson, Triplett, Reneau, Lukaszski, McBreen, Shaw, Arnold, Katsel, Peterson, Breedon, Bruno.



First Row: Waller, Thompson, Clarke. Second Row: Birge, West, La Telle, Walters, Kraut.

## Spring Sports Queen

● Shirley Thompson was the winner of the 1939 contest. She was the candidate for the "R" club with Glen Burkhardt as her manager. The two princesses, runners-up in the contest, were Elaine Waller and Maxine Clarke.

The ticket sale this year exceeded that of last year's, and established a new school record. The wholesome spirit and the fine cooperation of the student body contributed effectively to the success of the contest. M. J. Benjamin and M. E. Hubbell supervised it.

This year's contestants and their manager in order of the results, were:

Shirley Thompson .....	"R" .....	Glen Burkhardt
Elaine Waller .....	Cosmic .....	Warren Saltz
Maxine Clarke .....	Montero .....	Walter Mobley
Betty Walters .....	Independent .....	Bob Kroske
Ruth LaTelle .....	French .....	Ed Harris
Katherine West .....	Art .....	Kenny McRae
Katie Kraut .....	German .....	Frank Erickson
Edyth Birge .....	Junior Dramatic .....	Gordon Polk



First Row: Teraceno, Henry, Schemmel, and Simpson. Second Row: Perkins (instructor), Lipps, and Hetherington.

## Basketball

● Winners of the girls basketball tournament this year were the girls on the 12A team of the A league. Runners up for the second place were the 11B's and 10A's. The 11A team was the winner in the B league.

Each team played six games and the champions in the A league were the only ones to win all of their games.

### A-LEAGUE 12B CHAMPIONSHIP TEAM

Erma Lipps  
Edith Teraceno  
Ruth Hetherington

Frances Williamson  
Maxine McIlharness  
Elsie Mors  
Barbara Simpson

Mary Jane Wolferman  
Mary Lenz  
Ellen Pershall

### B-LEAGUE 11A CHAMPIONSHIP TEAM

Nellie Hunt  
Beverly Wilson  
Juanita Whitmore

Betty Gaines  
Doris Carlson  
Marjorie Kendrick

Thula Trone  
Ruth Crocker





**First Row:** McCafferty, Lowther, McNevin, Helean, Appa, R. Rizzuto, T. Rizzuto, Luse, Peterson, Andersonn, Bond. **Second Row:** Morse, Richardson, Thomas, E. Via, Hewitt, Taylor, Anderson, Ludwig, Glass, Carney, Schemmel. **Third Row:** Morse, Hanifen, Everett, Bullard. **Fourth Row:** Mabel Perkins (adviser), Pierce, Bridewell, Larson, Thompson, Johnston, Johnson, French, Crumbley, Simpson, Shaw, Coffee.

## Girls' Tennis

### SINGLES

Vivian Larson  
Shirley Thompson  
Jo Weller  
Elvera Via  
Laura Morse  
Jerry Everett

Theresa Rizzuto  
Rosie Rizzuto  
Marguerite Bullard  
Pauline Peterson  
Jean Hanifen  
Jerry Ludwig

Mary Glass  
Carol Shaw  
Genevieve Luse  
Zelda Lee Anderson  
Marian Finch

### DOUBLES

Violet Johnson—Bonnie Johnston  
Mary Schemmel—Carol Priano  
Evelyn McCafferty—Eva Jean Bridewell  
June Pierce—Jackie Lowther  
Betty Hewitt—Margaret Taylor

Jean Coffee—Doris Carney  
Sanda Appa—Betty Helean  
Violet Richardson—Marguerite Thomas  
Marian McNevin—Ellen Morse  
Louise Bond—Viola Andersonn



First Row: Wolferman, and Williamson. Second Row: Teraceno, and Hetherington. Third Row: Miss Perkins (instructor), Lipps, Pershall, and Simpson.

## *Girls' Volleyball*

~~~~~

● The champions in the Volleyball tournament were the girls on the Senior B team of the A league. Close behind was the 11B team.

Winner of the B league was the Junior A team. The B league includes the second, third and fourth teams of each class. Miss Mabel Perkins is the coach.

## *Acknowledgement*

~~~~~

● The editors wish to take this opportunity to express their appreciation to those who have so materially assisted them in planning the book which you have in your hands.

To E. M. Royce of Royce Studio who took the group pictures and to Mrs. Phelps of Phelps Studio who took pictures of the yell leaders and drum majors, we say "Thank you."

We have appreciated the many helpful suggestions given us by Mr. Robert Bruce, manager of the Spokane American Engraving Company and his assistants, Mr. Charles Magee and Miss Blance Lundblad.

To Mr. E. J. Griffin of the North Central print shop, who has taken personal interest in the book and who has given us many thoughtful suggestions, we are duly appreciative. Mr. Grover Wilson of the Zellerbach Paper Company helped us in the selection of the paper stock and the cover stock.

And we wish to thank Mr. Sam Babcock of the S. K. Smith Company, who supplied the Molloy-made covers for the seniors.

# THE HANDIEST PENCIL

## "East Side of Heaven"

*Says  
Joan Blondell*

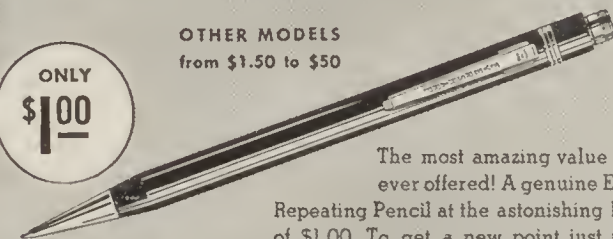
Co-Starred with Bing Crosby in "East Side of Heaven" a New Universal Picture.



**NEW**  
**GENUINE EVERSARP REPEATING PENCIL**  
**...AND PRICED AT LESS THAN EVER BEFORE!**

ONLY  
**\$1.00**

OTHER MODELS  
from \$1.50 to \$50



**A New Point . . . A  
New Lead . . . at the  
Touch of Your Thumb**

The most amazing value we have ever offered! A genuine Eversarp Repeating Pencil at the astonishing low price of \$1.00. To get a new point just press the top! When one lead is used up, another follows automatically. Your choice of three beautiful colors—red, blue, or black with silvery trim. Come in today and take advantage of this great pencil value.

**John W. Graham & Co.**  
**If It's Made of Paper We Have It.**

707-711 Sprague Ave.—708-716 First Ave.

## A TRIBUTE BY THE STAFF

The spring semester of 1939 marks the retirement of a faithful study hall supervisor, Mrs. Lutie Brown, following fourteen years of service with Hillyard and Rogers High Schools.

Although her position forced her to keep order at the expense of mischievous boys and girls, there are thousands of students and alumni who can thank her for keeping study conditions suitable for accomplishing a maximum amount of work.

She began her services with schools forty-two years ago in Burlington, Kansas. She has been in service in Spokane grade schools since 1912 and several grade schools have claimed her services.

This book will be a lasting memory of the appreciative feeling of the John R. Rogers student body for her years of service in study hall.

## You Can't Come in Here

Elmer Click: "I'm a reporter. I've been sent to do the murder."

Cap: "Well, you're too late, the murder's been done."

Office and Residence Glen. 0369

**Dr. G. W. Loughlin**  
DENTIST

E. 3003 Diamond Avenue  
SPOKANE, WASH.

**A COMPLETE  
BANKING SERVICE**

**UNITED  
HILLYARD**

Branch  
**Seattle-First National  
Bank**

**SPOKANE AND EASTERN  
DIVISION**

Member Federal Reserve System  
Member Federal Deposit Insurance  
Corporation

**Congratulations  
CERTIFIED FOOD  
SHOP**

N2001-03 Division St.  
3 Deliveries Daily  
BROADWAY 5262

**Congratulations  
to the  
Graduates of 1939**

**Royce Studio**  
N4905 Market St.

**PERRY'S  
FOOD STORE**

*Free Delivery*

If It's Good to Eat, Perry's Have It.  
Shop Where Prices Fit the  
Purse

MARKET AND QUEEN G. 3551



**Dedicated to Jay Tomlinson**

Romantic carryings-on among the vegetables:

"But darling we cantelope on your celery—."

"I artichoke you for that honey—."

"I've been thinking and we could squash our troubles and beet the world if we were a pear."

Her face became radish as she slowly drawled, "Lettuce."

We know this is corny but we don't carrot all.

Rosina Johnson and Helen Ratliff were talking about getting married on some future date.

Rosina: "I am going to marry a doctor, for when I am sick, I can get well for nothing."

Helen: "I'm going to marry a preacher, for when I'm bad, I can be good for nothing."

Harold Gendreaux: (To friend) "Bob, lend me 20 cents and only give me ten of them. Then you'll owe me ten, and I'll owe you ten and we'll be straight."

To Wayne Dalke: "When I am sad, I sing, and others are sad with me."

Ruth LaTelle: "Oh look! The players are covered with mud. How do you think they will get it off?"

Kathryn West: "What do you think the scrub team's for?"

Gladys Smith: "What is that bump on your forehead?"

Johnny Goodman: "Oh, that's where a thought struck me."

"This pen leaks," said the convict as the rain came through the roof.

We Supply Your Table With the  
Best to Be Had in

**Vegetables and  
Fruits**

Try Us

**Diamond Cash Grocery**

Regal and Diamond

G. 0020



*Gifts . . . . .*

of All Kinds

Are Advantageously Bought

*at* **SARTORI**

32 years of square dealing has brought Confidence to the Jewelry  
buying public of the Inland Empire  
Here you can buy just the watch you want at the price you  
want to pay.

**HAMILTON—ELGIN—LONGINES—GRUEN**

We are the official manufacturers of your School Pins and Rings

Avail Yourself of  
Sartori's Helpful  
Credit Service



**N. 10 Wall St.**

On the East Side of  
Wall St. Between  
Riverside and Sprague

*Complete Course in . . .*  
**COMMERCIAL TRAINING**

Bookkeeping, Gregg Shorthand, Stenotypy

with Allied Subjects offered by the

**Northwestern Business College**

Our courses continue during the summer months. Take advantage of this time to prepare yourself for your business career.

**Northwestern Business College**

DR. W. M. FALKENRECK, President

317 S. Howard St.

Spokane, Washington

R. 2196

**SNOW WHITE**

*. . . and the SEVEN DWARFS*

*Invite You To Try*

**BOGE BROS.**

***SNOW WHITE***

**SLICED BREAD**

### A Journalistic Kiss

"May I print a kiss on your lips," he said,  
And she nodded her sweet permission.

So they went to press—

Or rather, I guess—

They printed a whole edition.

As Wilburn Phillips was reading, he came  
to a word he couldn't pronounce.

"Barque," prompted Miss Herbert.

Willie looked at his classmates and laughed

"Barque," exclaimed Miss Herbert again.

Willie, looking up at the teacher, "Bow-  
wow!"

Joyce Fleming: "My Scotch boy friend sent  
me his picture yesterday."

Doris Morris: "How does he look?"

Joyce: "I don't know, I haven't had it de-  
veloped yet."

Mr. Tewinkle was putting a squad of Pi-  
rettes through their paces. Try as he would,  
he could not get a straight line. Finally in  
exasperation, he shouted, "What's the matter  
with you? Can't you line up? All of you fall  
out and take a look at the line you've made."

Warren Saltz: "My hair is full of electricity."  
Helen Fry: "No wonder, it's connected with  
a dry cell."

Mr. Eaman: "How many natural magnets  
are there?"

Jack Alden: "Blonds, brunettes, and red-  
heads."

Mr. Byrne, (to sleepy student): "Does the  
hot air bother you? If it does, I'll open the  
window."

Brock Weir: "Naw—you can go on talking."

## Nevada St. PHARMACY

A. E. JOHNSON, Prop.

Your  
Neighborhood  
Druggist

A Complete Prescription De-  
partment, Fountain Service,  
Magazines, Candies, Cigars,  
Cigarettes.

Free Delivery

N4602 NEVADA ST.

Phone Glen. 4144

## MILLER-DERVANT BEAUTY PARLORS

Costumers and Wig Makers

*Masquerade and  
Theater Costumes*

W1015-17 Riverside

M. 6642

## CONN Band Instruments

Soprani Accordions

## RUSS BAILEY'S

911 Riverside—Opposite Post Office

## GRANT'S GROCERY

Groceries, Lunch Meats, Fruits,  
Vegetables, Ice Cream,  
Candies

SCHOOL SUPPLIES

G. 3403

4901 Market St.

# *The Dorian Studio*

*Hereby Extends  
to Each and All  
of the Graduates*



All Good Wishes to Future Success

•

*We appreciate your patronage and  
will always aim to give you  
the finest in*

## *Photography*

•

# *The Dorian Studio*

436 Peyton Bldg.

*Spokane's Leading Studio of Today*



**Did You Ever Hear of This?**

A Freshman's head is full of air,  
Of air so hot and breezy,  
A Sophomore's head is full of naught,  
Of naught but "Take life easy."  
A Junior's head is full of love,  
The love you get at college;  
A Senior's head is full of brains,  
A greater amount of knowledge.

The youthful graduate from agricultural college looked rather scornfully at the old farmer. "Your methods of cultivation are hopelessly out of date," he said with a superior air. "Why I'd be surprised if you got 10 pounds of apples off of that tree."

"So would I," said the farmer, "It's a pear tree."

Wanda Watts: "I wonder how old Miss Swann is?"

Nada Watts: "She must be awfully old, because I heard she used to teach Caesar."

If all the students that sleep in classes were laid end to end—they would be more comfortable.

Mr. Becher: "I'm surprised at you, Bob, that you don't know when Columbus discovered America! What does the chapter heading of this week's lesson read?"

Bob Kroske: "Columbus, 1492."

Mr. Becher: "Well, isn't that plain enough? Did you ever see it before?"

Bob: "Yes sir, but I always thought it was his telephone number."

Lorna Ayler: "A fool can ask more questions than a wise man can answer."

Tommy Glover: "That's why I flunked."

**22 Years on North Monroe**

**SKY'S**  
Cleaners

Sky Hulett, Mgr.



BROAD. 0651

Suits to Order—Expert Repairing—  
Call for and Delivery Service.  
Moth-Proof Cleaning

**NORA AND MONROE**

**KEEP HEALTHY**

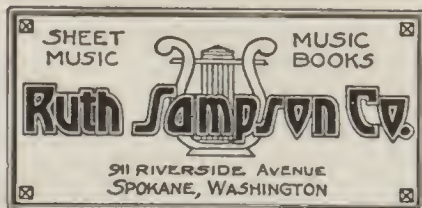
DRINK

**Hillyard Dairy Milk**

(Perfectly Pasteurized)

**Hillyard Dairy**

GLEN. 0176

**SCHOOL SUPPLIES,  
CANDY, GUM**

Stop and Get Them at

**Blodgett's**

## Pome

O, M L E what X T C  
 I always feel when U I C  
 I used to rave of L N'S eyes  
 4 L C I gave countless sighs,  
 I was a keen competitor  
 But each is now a nov-L T  
 4 U X L them all U C.

Miss Stevens: "What do you know about Atlas?"

Al Akins: "He was the world's greatest gangster."

Miss Stevens: "Where did you get that idea?"

Al Akins: "The history books say he held up the world."

Miss Herbert: "Will someone in the class use the word geometry in a sentence?"

Earl Le Van: "There was a little acorn that grew and grew until one day it said 'Geometry.'"

Exam question: What is the most important date in Roman history?

Ernest Ziegler: Anthony's first date with Cleopatra.

"Are we going to try out young Balch for the football squad?" asked the captain.

"No," replied the coach; "anybody who can spell such words as plenipotentiary, erysipelas, and plebiscite is too good for a football player."

John McKinney: "I passed 'Shakespeare' to-day."

Donald McClelland: "Did he speak?"

Mr. Minzel: "When rain falls, does it ever rise again?"

Roger Case: "Oh, yes, in dew time."

## INDEPENDENT MARKET

Fresh and Salt Meats, Fish and  
Oysters

2909 E. DIAMOND AVE.

## After High School, What?

Your swiftest entrance to the business world is through the  
KELSEY-BAIRD SECRETARIAL SCHOOL. WHY?

1. **Personal attention**—thus assuring you of the fastest progress possible. Your rapid advancement here means real money saved in tuition and supplies.
2. **University trained teachers**—to give you the advantage of thorough instruction.
3. **Up-to-date equipment**—to train you on the newest machines to fit yourself into the modern business offices.
4. **Employment service**—to place you in a good position that you have been trained to fill capably.

## Kelsey-Baird Secretarial School

Hutton Building

Main 6746

**Dedicated to Don Moss**

Breathes there a student with soul so dead,  
Who never to himself has said,  
To heck with homework,  
I'm going to bed?

Ellen Pershall: "So you think that Al is a flirt?"

Hazel Barker: "I'll say, why he can tell the owner of any lipstick in school by simply tasting it."

Dedicated to almost any Senior:

Student: "Yes, dad, I'm a big gun at school."

Dad: "Well, why don't I hear a better report, then?"

Mrs. Bevan: "I heard a noise when you came in last night."

Al Bevan: "Perhaps it was night falling."

Mrs. Bevan: "No, it was day breaking."

June Enos: "Say, do you know how to get Mr. Benjamin's goat?"

Tim Elliot: "I'll bite!"

June Enos: "Find out where he ties it."

# SATER'S MARKET

MONROE AT INDIANA

**Burger Bros.**  
Quality Meats

**Bob and Charlie**  
Best in Fruits and Vegetables

**Sater's Grocery**  
Bakery and Dairy Products

*Open Sundays and Evenings*

## Payless DRUG STORE

Drugs, Drug Sundries, Toilet-  
ries, Candies, Kodaks and  
Films

## Duthie Seed Co.

R. W. NEVILLE, Mgr.

510 MAIN AVE.  
Spokane, Wash.

## Hillyard Laundry

Cleaning and Pressing

Clean Clothes Are a Mark of Dis-  
tinction

E. 3108 Olympic Avenue  
Glen. 1548

A Home Owned Store That  
Sells Quality Merchandise for  
Cash

## BRIDGEPORT Grocery and Market

We Deliver  
GLENWOOD 0580

## Want a Job?

*Then the Kinman Business University can help you.*

EMPLOYMENT calls are received regularly by the KBU free employment department.

THROUGH this active and efficient employment department, graduates are assisted in securing desirable positions.

NEW classes start every Monday in both day and evening school. Special classes for those who expect to go on to college. Visitors are always welcome.

# KINMAN

Business University



Miss Miriam L. Barnhill, B. A., shown sending a young man out to a position.

HOWARD AT FIRST

# DODSON'S

517 Riverside Avenue

*Jewelers for 50 Years*



VICTORIA . . . Newest 15-jewel GRUEN. Yellow or white gold filled case. . . . . \$29.75

Elgin, Gruen, Longines and Hamilton Watches

*Diamond Merchants*



**Broken In**

Coach Ellingsen: "You're doing well, Johnny. The way you hit that line and the way you dodge and tackle and worm through them is marvelous."

Johnny Osso: "It comes easy to me. I used to go with my mother to the bargain sales."

**Pome By Bob Berger**

Both beautiful and dumb  
Must my true love be,  
Beautiful so I'll love her  
And dumb so she'll love me.

Johnny Olsen and Florence St. Onge were out automobiling when they both suddenly realized they had lost their way—

Johnny: "I wish Emily Post was here."

Florence: "Why?"

Johnny: "I think we took the wrong fork."

Mr. Mac Gown: "Tomorrow we shall take the life of Robert Louis Stevenson. So come prepared."

If ever your shoes squeek don't let it bother you; 'twas Shakespeare who said: "Let everyone have music in his soul."

# PETERS & SONS

Highest

Quality

Flowers

LOCALLY GROWN

LAST LONGER

## Christian's

### Portraits

"Exquisite But Not Expensive"

104 N. Howard Main 1025

## GERLACH MOTOR COMPANY

Your Chevrolet Dealer

CONGRATULATIONS TO  
THE CLASS OF 1939

N4724 Market St. Spokane, Wash.

## JOHN C. McBRIDE

Dental Surgeon

United Hillyard Bank Bldg.

# Terry's

If you want what you want when  
you want it

Call Terry's

FREE DELIVERY

N3936 Pittsburg

G. 0836

Don Hughes: "So you took Mary Lenz home from the movies last night?"

Ralph Berg: "Yes!"

Don H. "How far does she live from the theater?"

Ralph Berg: "Oh, three soda-fountains and a candy store."

Absent Minded Professor to secretary: "I am going to town. If by any chance I happen to return during my absence, keep me here until I get back."

Bob Swartz: "Why didn't you answer my letter?"

Betty Wagner: "I didn't get it and besides I didn't like some of the things you said."

Madeline Murphy: "I simply adore that funny step. Where did you pick it up?"

Don Gottwig: "Funny step, nothing! I'm losing my garter."

Mr. Eaman: "Oxygen wasn't discovered till 1770."

Rex Hansen: "What did they breathe before that?"

### Why She "Shuddered"

Miss Smith: "For what are the Phoenicians famous?"

Gordon Polk: "Blinds."

Pinky Carter: "It sure was hot at the game today."

Betty Gaines: "Why didn't you get one of those baseball fans they always have at the baseball games?"

Mr. Hubbard: "Use juicy in a sentence."

Mary Sullivan: "Juicy what I see?"

# BURGAN'S

## Groceries

Buy Your Quality Groceries at  
Burgan Stores and Save Money!

# Wraight's Store

Home Owned—Independent

Main and Wall Sts.

Riv. 5442

HEADQUARTERS FOR

# FORMALS

\$3.95

and up

More and More People Are Learning the Wisdom of Shopping at

# WRAIGHT'S STORE

AT MAIN AND WALL STS. IN SPOKANE

Mr. Weston (upstairs): "It is time for that young man to go home."

Jim Brewer: (overhearing): "Well, when you don't have a self-starter, a crank comes in mighty handy."

Mr. Becher: "Please tell me what 'Do unto others as you wish others to do unto thee' means."

Johnny Homer: "It means that if you want a girl to kiss you, you kiss the girl."

"Would you mind getting up for just a minute, Mr. Coburn?"

"And why?" he asked.

"So I can put this 'Wet Paint' sign on the seat," said Harry Young.

Country boy: "That's a Jersey cow over there."

City boy: "Say! You've got a good eye sight to see her license plate at that distance."

Eileen Hanifen: "Hey, why have you those loud socks on?"

Claude Kaler: "To keep my feet from going to sleep."



M. 4233

N318 Division

# The . . . LE ROI

N5017-21 MARKET

MEATS  
GROCERIES  
DRY GOODS

Make the Le Roi your store as well  
as ours

"EVERYTHING TO EAT AND  
WEAR"

# DOERR'S JEWELRY

717 Riverside Ave.

Our 50 years of business success assures you of the dependability of everything in the jewelry line. All kinds of jewelry, remodeling and certified watch repairing.

# The Marella

C. G. TEMPLE, Prop.

E3009 Diamond

G. 2831

# MILK SHAKES

None Better

# Congratulations

to the

JUNE GRADUATING  
CLASS

Broadview Dairy Co.

Jim Ure: "You always do all the talking and never listen."

Mary Jane Wolferman: "How ridiculous! I've heard every word I've said."

Mr. Jinnett: "How's the team coming?"

Coach Ellingsen: "Like counterfeit money—the halves are full of lead and the quarters can't pass."

Margy Kirby: "Why do all those trees bend over so far?"

Margaret Wilson: "You'd bend over, too, if you were full of green apples as they are."

Susie Soaper: "I ain't got no pencil."

Miss Budwin: "You have no pencil, I have no pencil, they have no pencils."

Susie: "Well, who has all the pencils?"

Mr. Saltz: "How do you make anti-freeze?"

Daryl Nelson: "By hiding her woolen pajamas."

Keith Neighbors: "The clock is striking."

Harold Schindler: "What for, shorter hours?"

## STAN DENSOW ELECTRIC

General Electric and Frigidaire  
REFRIGERATORS AND  
RANGES

All Electrical Appliances

**CASEY'S**  
DEPARTMENT STORE

"If It's Made to Wear, We Have It"

N5101 MARKET ST.  
Phone Glen. 0000  
SPOKANE, WASH.



## Graduation Portraits

- In creative sight and shadow artistry of camera and brush.
- For more than 25 years this studio has specialized in graduation portraiture and here you are assured of the utmost possible value and workmanship of highest excellence.

*Anguire*  
STUDIO OF  
*Modern Art*  
*Portraiture*

609  
Fernwell Bldg.



Dedicated to Don Kerr.  
Slippery ice—very thin.  
Pretty girl—tumble in.  
Saw a fella—on the bank.  
Gave a shriek—then she sank.  
Boy on hand—heard her shout.  
Jumped right in—pulled her out.  
Now he's hers—very nice.  
But she had—to break the ice.

Donna Hobbs: "Where did you get the black eye?"

Chuck Gunn: "I went to a dance and was struck by the beauty of the place."

Elmer Click: "Give me a sentence with the word fascinate!"

Russell Thompson: "I've got nine buttons on my coat but I can only fascinate."

James Forsyth: "See here, waiter, I found a button in my salad."

Waiter: "That's queer. It must have fallen in when we put on the dressing."

Jim Snyder: "I'm just like Napoleon."

Rosie Rizzuto: "How's that?"

Jim Snyder: "I just went down in history."

## EASTERN Outfitting Co.

809 Riverside—Spokane

For the young lady or the  
young man graduate The East-  
ern shows . . .

**Quality Apparel at  
Moderate Cost**

*You are invited to see the new  
fashions especially bought for  
you*

**RED & WHITE**  
THE BEST THE MARKET AFFORDS

Congratulations to the  
June 1939 Class  
John R. Rogers High School

FROM YOUR NEIGHBORHOOD

**Red & White Stores**

'Nother Pome by "Tuffie" Block.  
Time is passing,  
I'm not glad,  
Time is passing  
I am sad.  
Time is passing,  
Sad is my lot.  
Time is passing,  
I am not.

Knock! Knock!  
Who's there?  
Phillip  
Phillip who?  
This is put here to Phillip space.

Ruth Swanson: "We had a math test today  
and I passed."

Joyce Fletcher: "Honestly?"

Ruth Swanson: "What's the difference?"

We editors may dig and toil  
Till our finger tips are sore,  
But some young squirt is sure to say,  
I heard that joke before.

Miss Simet: "What is concentration?"

Betty Sims: "Mental agony."

Ray Manley: "Please!"  
She: "No."  
Ray: "Oh, please!"  
She: "No, No."  
Ray: "Oh, just this once!"  
She: "I said no."  
Ray: "Oh, go ahead."  
She: "Positively not."  
Ray: "Oh, gee, Mom, all the fellows are  
wearing those sweaters now."

Even his best friends wouldn't tell him—  
so he flunked the exam.

I  
G  
A

Liberty Market  
and Grocery

I  
G  
A

CONGRATULATIONS  
CLASS OF 1939

Groceries, Meats, Fruits and  
Vegetables

N. 5109 MARKET ST.

IT IS EASY TO DRY DISHES AND POLISH GLASSWARE WITH

RED BIRD  
Tea Towels



These Unusual Dish Dryers Are Lintless and Highly Absorbent,  
and Are Ready to Use Without "Breaking In."

AN IDEAL GIFT  
SOLD IN MOST RETAIL STORES

ORIGINATED AND MANUFACTURED ONLY BY

Spokane Toilet Supply Co.



*So that You  
need not guess*

*We maintain ample  
equipment and an ex-  
perienced art and  
mechanical staff —  
So that our patrons  
need leave nothing to  
chance*

**THE  
SPOKANE AMERICAN  
ENGRAVING COMPANY**  
Established 1904

